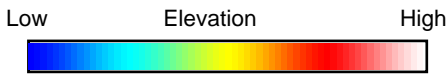
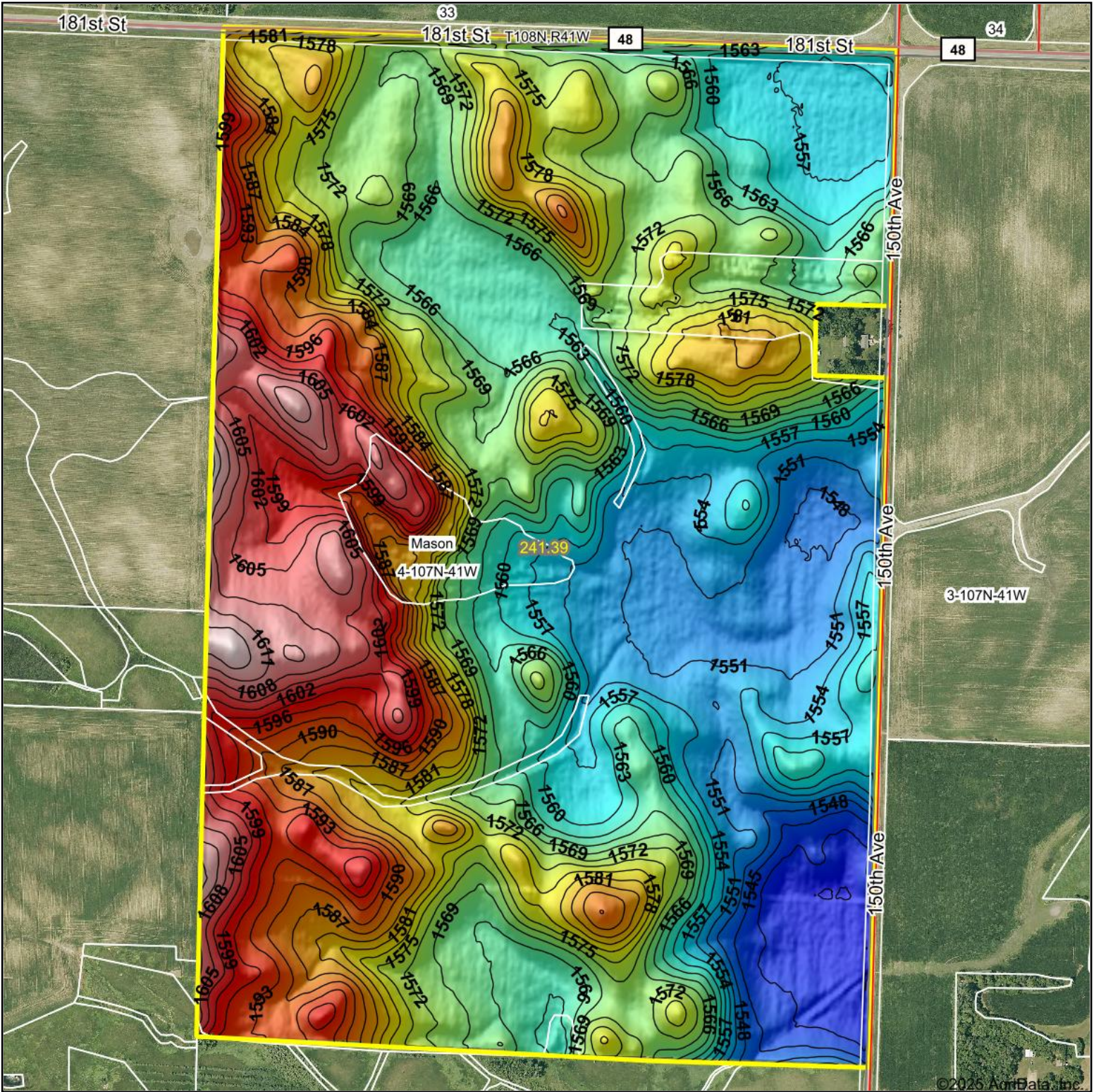
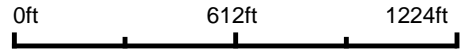


Topography Hillshade



Source: USGS 3 meter dem
 Interval(ft): 3
 Min: 1,538.4
 Max: 1,618.8
 Range: 80.4
 Average: 1,572.6
 Standard Deviation: 17.72 ft



4-107N-41W
Murray County
Minnesota

Boundary Center: 44° 6' 13.32, -95° 46' 7.37

