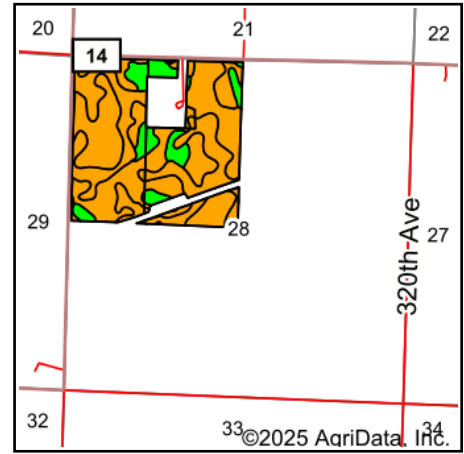
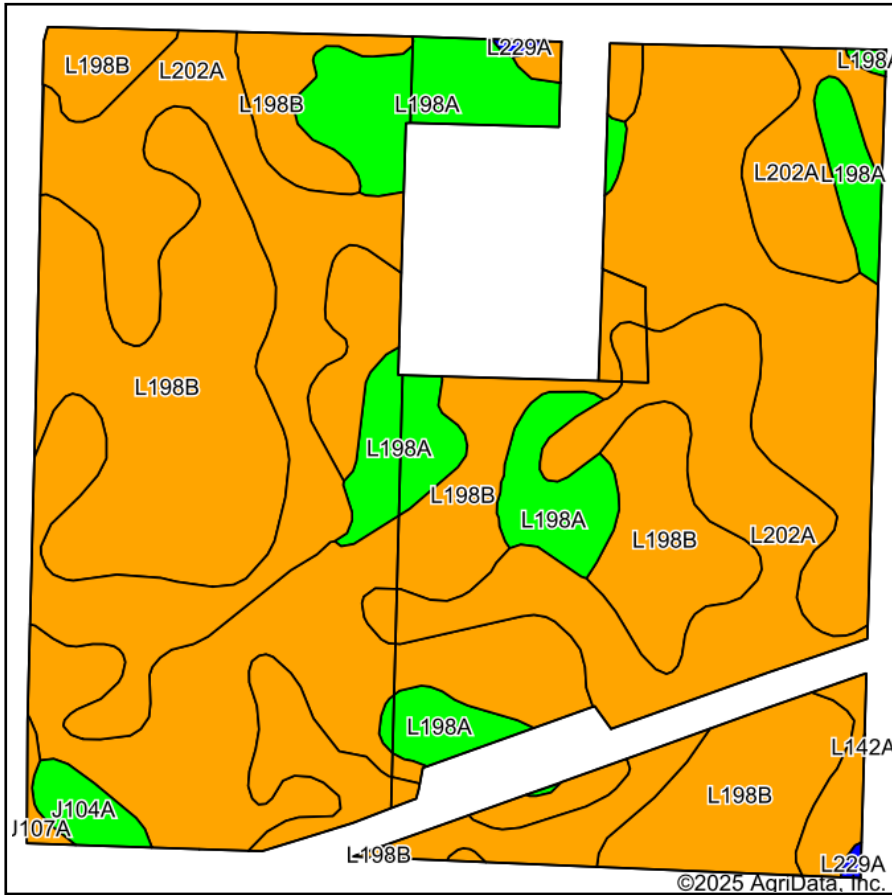


Soils Map



State: **Minnesota**
 County: **Lyon**
 Location: **28-109N-40W**
 Township: **Monroe**
 Acres: **134.78**
 Date: **1/6/2025**



Soils data provided by USDA and NRCS.

Area Symbol: MN083, Soil Area Version: 21

Code	Soil Description	Acres	Percent of field	Non-Irr Class Legend	Non-Irr Class *c	Productivity Index
L198B	North Twin-Walnut Grove complex, 1 to 4 percent slopes	73.64	54.6%		Ile	94
L202A	Pell Creek-Romnell complex, 0 to 2 percent slopes	44.33	32.9%		IIw	89
L198A	North Twin-Walnut Grove complex, 0 to 2 percent slopes	14.82	11.0%		Iw	96
J104A	Svea loam, 1 to 3 percent slopes	1.37	1.0%		Ie	99
J107A	Lakepark-Roliss-Parnell, depressional, complex, 0 to 3 percent slopes	0.37	0.3%		IIw	93
L229A	Romnell silty clay loam, depressional, 0 to 1 percent slopes	0.25	0.2%		IIIw	87
Weighted Average					1.88	92.6

*c: Using Capabilities Class Dominant Condition Aggregation Method