

- Unless otherwise noted:  
 Shares are 100% operator  
 Crops are non-irrigated  
 Corn = yellow for grain  
 Soybeans = common soybeans for grain  
 Wheat = HRS, HRW = Grain  
 Sunflower = Oil, Non-Oil = Grain  
 Oats and Barley = Spring for grain  
 Rye = for grain  
 Peas = process  
 Alfalfa, Mixed Forage AGM, GMA, IGS = for forage  
 Beans = Dry Edible  
 NAG = for GZ  
 Canola = Spring for seed

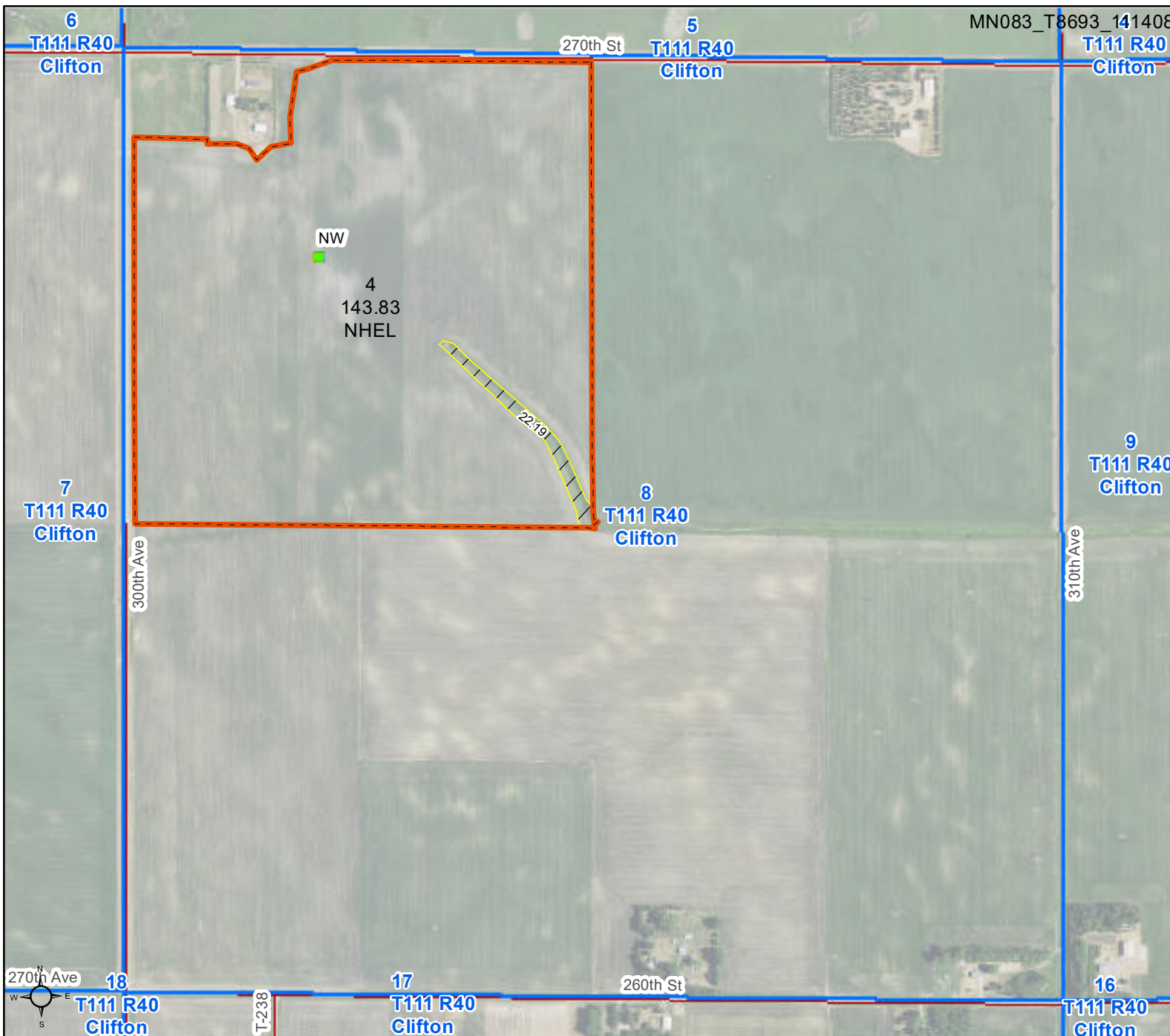
**Common Land Unit**

- Non-Cropland
- Cropland
- Tract Boundary

**Wetland Determination Identifiers**

- Restricted Use
- Limited Restrictions
- Exempt from Conservation
- Compliance Provisions

Tract Cropland Total: 143.83 acres



United States Department of Agriculture (USDA) Farm Service Agency (FSA) maps are for FSA Program administration only. This map does not represent a legal survey or reflect actual ownership; rather it depicts the information provided directly from the producer and/or National Agricultural Imagery Program (NAIP) imagery. The producer accepts the data 'as is' and assumes all risks associated with its use. USDA-FSA assumes no responsibility for actual or consequential damage incurred as a result of any user's reliance on this data outside FSA Programs. Wetland identifiers do not represent the size, shape, or specific determination of the area. Refer to your original determination (CPA-026 and attached maps) for exact boundaries and determinations or contact USDA Natural Resources Conservation Service (NRCS). This map displays the 2021 NAIP imagery.

~~8693~~  
Now { 8693  
8694

HIGHLY ERODIBLE LAND AND WETLAND  
CONSERVATION DETERMINATION

C Sandberg

Name: BURNS, PATRICK  
County: LYON COUNTY

Tract: 6822  
Request Date:

Farm: BURNPAT  
FSA Farm No.: 6489

Section I - Highly Erodible Land

Fields in this section have undergone a determination of whether they were highly erodible land (HEL) or not; fields for which an HEL Determination has not been completed are not listed. In order to be eligible for USDA benefits, a person must be using an approved conservation system on all HEL.

Field	HEL(Y/N)	Sodbusted(Y/N)	Acres	Determination Date
1	N	N	220.3	11/28/90

Section II - Wetlands

Fields in this section have had wetland determinations completed. See the Wetlands Explanation section for additional information regarding allowable activities under the wetland conservation provisions of the Farm Bill and Section 404 of the Clean Water Act.

Field	Wetland Label	Acres	Determination Date	Certification Date
1	W	0.3	11/28/90	Wetlands Not Certified
1	PC/NW	220.0	11/28/90	Wetlands Not Certified
NC	NI	9.7	11/28/90	Wetlands Not Certified

Wetlands Explanation

Wetland Label      Explanatory Comments

HIGHLY ERODIBLE LAND AND WETLAND  
CONSERVATION DETERMINATION

Name: BURNS, PATRICK Tract: 6822 Farm: BURNPAT  
County: LYON COUNTY Request Date: FSA Farm No.: 6489

Wetlands Explanation

Wetland

Label Explanatory Comments

- NI Not Inventoried;  
Description: An area where no wetland determination has been completed; Authorized Cropping: May be farmed as long as no woody vegetation is removed and no hydrologic manipulation is undertaken; Authorized Maintenance: Request determination from NRCS\* prior to initiating any manipulation; If you plan to clear, drain, fill, level or manipulate these areas contact NRCS\* and COE\*\*.
- PC/NW Prior Converted Cropland/Non-Wetland;  
Description: An area that contains both prior converted cropland and non-wetland; Authorized Cropping: No restrictions; Authorized Maintenance: No restrictions unless the manipulation would convert adjacent wetland labels.
- W Wetland;  
Description: An area that meets the wetland criteria including wetland farmed under natural conditions. Includes abandoned wetland resulting from abandonment of other wetland labels; Authorized Cropping: May be farmed under natural conditions without removal of woody vegetation; Authorized Maintenance: At level needed to maintain original system on related farmed wetland, farmed wetland pasture, and prior converted cropland. Must not convert additional wetlands or exceed "original scope and effect"; If you plan to clear, drain, fill, level or manipulate these areas contact NRCS\* and COE\*\*.

\* Natural Resources Conservation Service

\*\* Corps of Engineers

Remarks

HIGHLY ERODIBLE LAND AND WETLAND  
CONSERVATION DETERMINATION

Name: BURNS, PATRICK  
County: LYON COUNTY

Tract: 6822  
Request Date:

Farm: BURNPAT  
FSA Farm No.: 6489

I certify that the above determinations are correct and were conducted in accordance with policies and procedures contained in the National Food Security Act Manual.

Signature Designated Conservationist

Date

MIKE MUZZY

Jul 18, 2000

All USDA programs and services are available without regard to race, color, national origin, religion, sex, age, marital status, or handicap.

AG-ARTIFICIAL WETLAND	EW-FARMLAND WETLAND (ARTIFICIAL)	NHEL-HIGHLY ERODIBLE LAND	PC-POOR CONCEPT WETLAND
CG-COMMERCIAL/INDUSTRIAL WETLAND	HW-HIGH WATERSHED WETLAND	HC-NON CROPLAND	T-TRACT NUMBER
EW-ESTUARINE WETLAND	HW-LOW WATERSHED WETLAND	HW-NON INVENTORIED	W-WETLAND
EW-FARMLAND WETLAND	HW-MID WATERSHED WETLAND	HW-NON WETLAND	HW-MIXED USE, FSA, FWS, WETLAND

COUNTY LYON, MN

NOT TO REPRODUCED CROP YEAR PHOTO NO. H-7X

SCALE April 2000

WARNING: Contact NRCS before clearing, draining, dredging, filling or leveling any wet areas or wetland coded fields or improving modifying or maintaining an existing drainage system.

Chuck Sandberg fec

