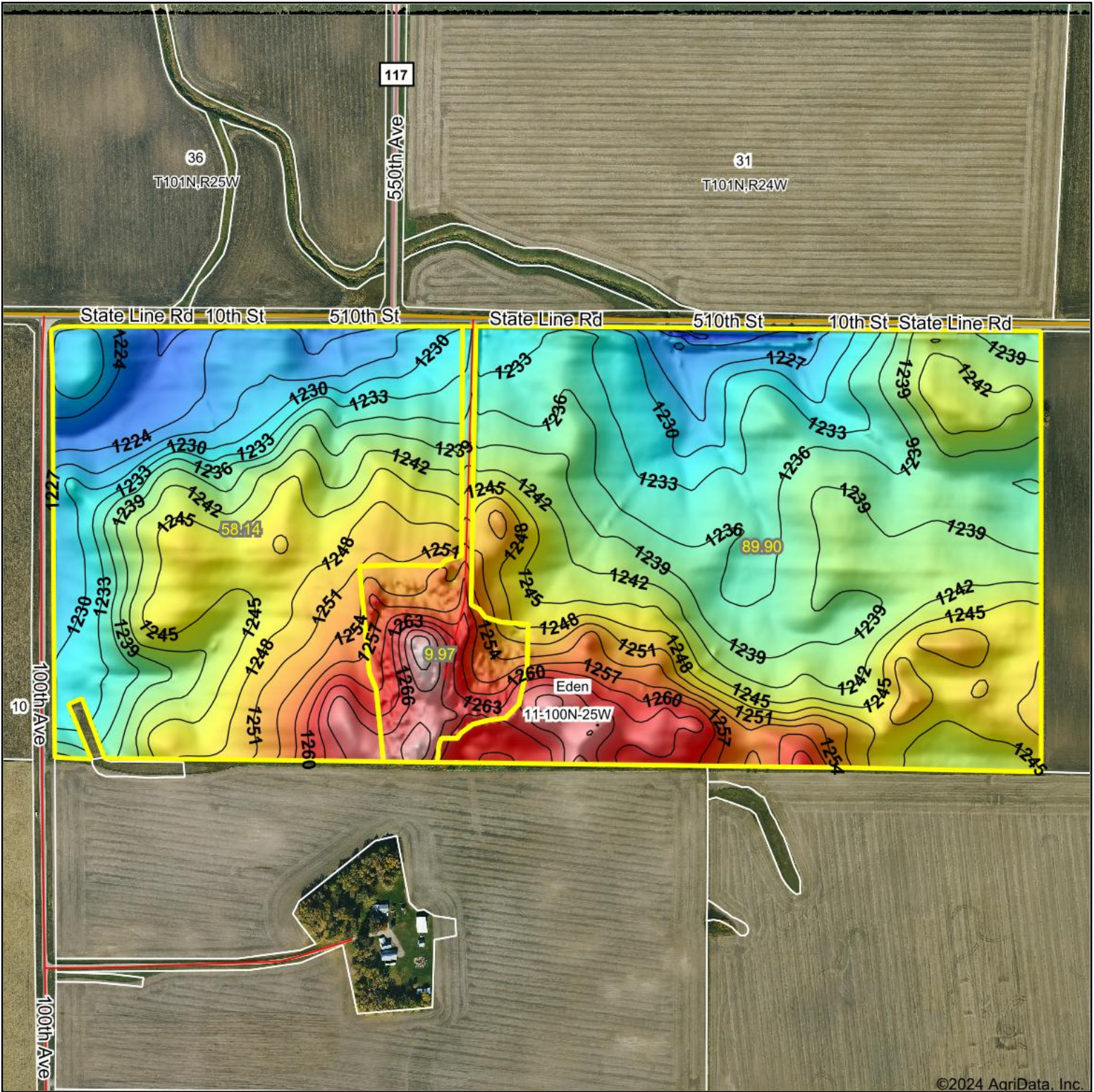


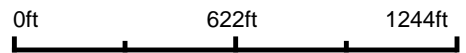
# Topography Hillshade



©2024 AgriData, Inc.



Source: USGS 10 meter dem



Interval(ft): 3

Min: 1,215.4

Max: 1,274.0

Range: 58.6

Average: 1,241.1

Standard Deviation: 10.73 ft



**11-100N-25W**  
**Winnebago County**  
**Iowa**

Boundary Center: 43° 29' 49.84, -93° 45' 58.07



Maps Provided By:



© AgriData, Inc. 2023 www.AgriDataInc.com

Field borders provided by Farm Service Agency as of 5/21/2008.