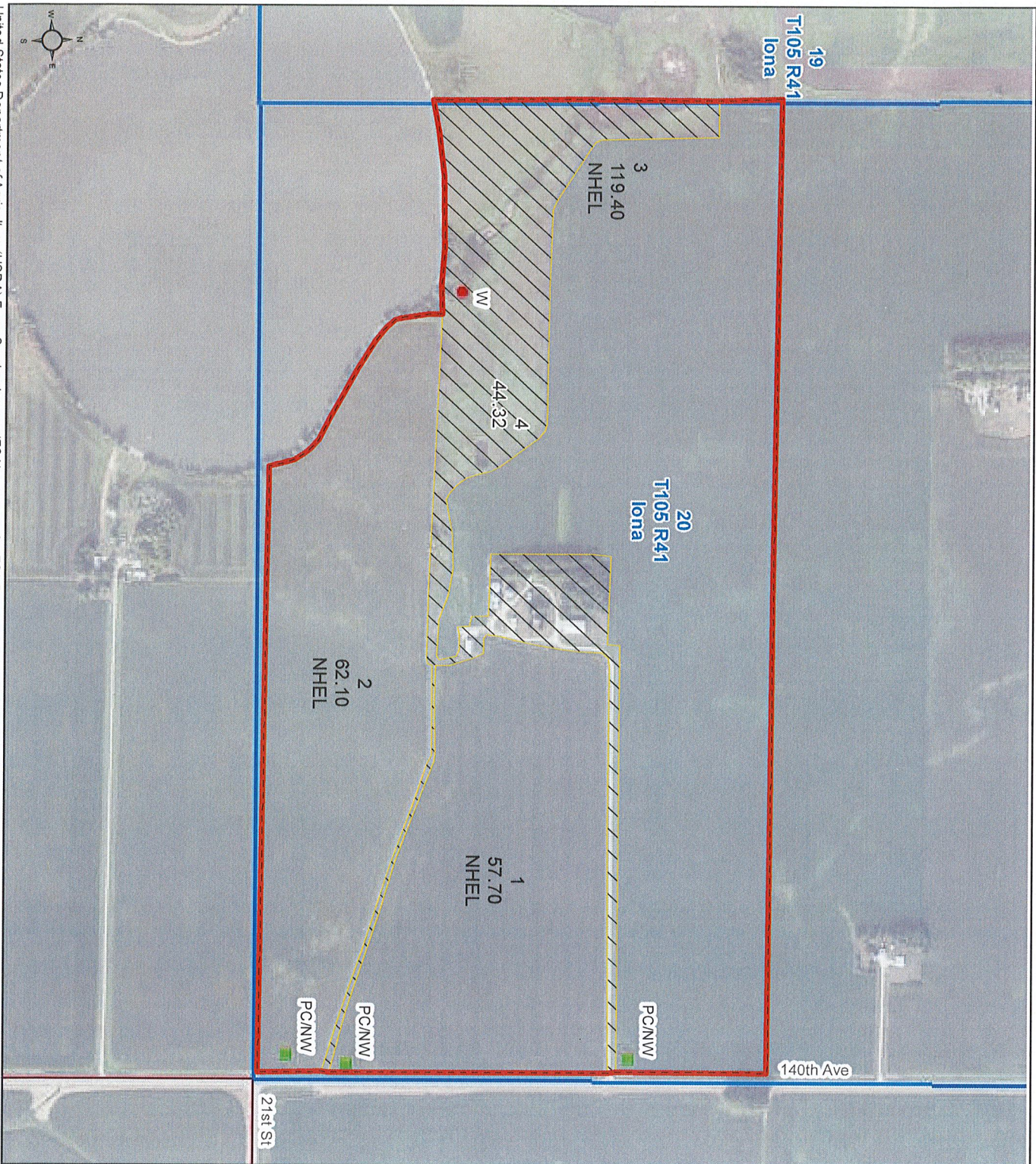


Unless otherwise noted:
 Shares are 100% operator
 Crops are non-irrigated
 Corn = yellow for grain
 Soybeans = common soybeans for grain
 Wheat = HRS, HRW = Grain
 Sunflower = Oil, Non-Oil = Grain
 Oats and Barley = Spring for grain
 Rye = for grain
 Peas = process
 Alfalfa, Mixed Forage AGM, GMA, IGS = for forage
 Beans = Dry Edible
 NAG = for GZ
 Candia = Spring for seed

- Common Land Unit**
-  Non-Cropland
 -  Cropland
 -  Tract Boundary
 -  Roads

- Wetland Determination Identifiers**
-  Restricted Use
 -  Limited Restrictions
 -  Exempt from Conservation Compliance Provisions

Tract Cropland Total: 239.20 acres



United States Department of Agriculture (USDA) Farm Service Agency (FSA) maps are for FSA Program administration only. This map does not represent a legal survey or reflect actual ownership; rather it depicts the information provided directly from the producer and/or National Agricultural Imagery Program (NAIP) imagery. The producer accepts the data as is and assumes all risks associated with its use. USDA-FSA assumes no responsibility for actual or consequential damage incurred as a result of any user's reliance on this data outside FSA Programs. Wetland identifiers do not represent the size, shape, or specific determination of the area. Refer to your original determination (CPA-026 and attached maps) for exact boundaries and determinations or contact USDA Natural Resources Conservation Service (NRCS). This map displays the 2021 NAIP imagery.

MINNESOTA

MURRAY

Form: FSA-156EZ

See Page 2 for non-discriminatory Statements



United States Department of Agriculture
Farm Service Agency

Abbreviated 156 Farm Record

FARM : 2594

Prepared : 10/1/24 12:12 PM CST

Crop Year : 2025

Operator Name :
CRP Contract Number(s) : None
Recon ID : None
Transferred From : None
ARCPLC G//F Eligibility : Eligible

Farm Land Data

Farmland	Cropland	DCP Cropland	WBP	EWP	WRP	GRP	Sugarcane	Farm Status	Number Of Tracts
283.52	239.20	239.20	0.00	0.00	0.00	0.00	0.0	Active	1
State Conservation	Other Conservation	Effective DCP Cropland	Double Cropped		CRP	MPL	DCP Ag.Rel. Activity	SOD	
0.00	0.00	239.20	0.00		0.00	0.00	0.00	0.00	

Crop Election Choice

ARC Individual	ARC County	Price Loss Coverage
None	CORN, SOYBN	None

DCP Crop Data

Crop Name	Base Acres	CCC-505 CRP Reduction Acres	PLC Yield	HIP
Corn	135.10	0.00	179	
Soybeans	103.60	0.00	45	
TOTAL	238.70	0.00		

NOTES

Tract Number : 12276
Description : IONA-20 S2
FSA Physical Location : MINNESOTA/MURRAY
ANSI Physical Location : MINNESOTA/MURRAY
BIA Unit Range Number :
HEL Status : NHEL: No agricultural commodity planted on undetermined fields
Wetland Status : Tract contains a wetland or farmed wetland
WL Violations : None
Owners : MCCORMICK PARTNERS LP
Other Producers : None
Recon ID : None

Tract Land Data

Farm Land	Cropland	DCP Cropland	WBP	EWP	WRP	GRP	Sugarcane
283.52	239.20	239.20	0.00	0.00	0.00	0.00	0.0

MINNESOTA
MURRAY
Form: FSA-156EZ



United States Department of Agriculture
Farm Service Agency

Abbreviated 156 Farm Record

FARM : 2594
Prepared : 10/1/24 12:12 PM CST
Crop Year : 2025

Tract 12276 Continued ...

State Conservation	Other Conservation	Effective DCP Cropland	Double Cropped	CRP	MPL	DCP Ag. Rel Activity	SOD
0.00	0.00	239.20	0.00	0.00	0.00	0.00	0.00

DCP Crop Data

Crop Name	Base Acres	CCC-505 CRP Reduction Acres	PLC Yield
Corn	135.10	0.00	179
Soybeans	103.60	0.00	45
TOTAL	238.70	0.00	

NOTES

--

In accordance with Federal civil rights law and U.S. Department of Agriculture (USDA) civil rights regulations and policies, the USDA, its Agencies, offices, and employees, and institutions participating in or administering USDA programs are prohibited from discriminating based on race, color, national origin, religion, sex, gender identity (including gender expression), sexual orientation, disability, age, marital status, family/parental status, income derived from a public assistance program, political beliefs, or reprisal or retaliation for prior civil rights activity, in any program or activity conducted or funded by USDA (not all bases apply to all programs). Remedies and complaint filing deadlines vary by program or incident.

Persons with disabilities who require alternative means of communication for program information (e.g., Braille, large print, audiotape, American Sign Language, etc.) should contact the responsible Agency or USDA's TARGET Center at (202) 720-2600 (voice and TTY) or contact USDA through the Federal Relay Service at (800) 877-8339. Additionally, program information may be made available in languages other than English.

To file a program discrimination complaint, complete the USDA Program Discrimination Complaint Form, AD-3027, found online at http://www.ascr.usda.gov/complaint_filing_cust.html and at any USDA office or write a letter addressed to USDA and provide in the letter all of the information requested in the form. To request a copy of the complaint form, call (866) 632-9992. Submit your completed form or letter to USDA by: (1) mail: U.S. Department of Agriculture Office of the Assistant Secretary for Civil Rights 1400 Independence Avenue, SW Washington, D.C. 20250-9410; (2) fax: (202) 690-7442; or (3) e-mail: program.intake@usda.gov. USDA is an equal opportunity provider, employer, and lender.

Sec 20 Iona



United States Department of Agriculture

Natural Resources Conservation Service

NRCS-CPA-026E 9/2012

HIGHLY ERODIBLE LAND AND WETLAND CONSERVATION DETERMINATION

Name Address	Request Date: 4/25/2019	County: Murray
Agency or Person Requesting Determination: Operator	Tract No: 12276	FSA Farm No: 2594

Section I - Highly Erodible Land

Is a soil survey now available for making a highly erodible land determination?	
Are there highly erodible soil map units on this farm?	

Fields in this section have undergone a determination of whether they are highly erodible land (HEL) or not; fields for which an HEL Determination has not been completed are not listed. In order to be eligible for USDA benefits, a person must be using an approved conservation system on all HEL.

Field(s)	HEL(Y/N)	Sodbust (Y/N)	Acres	Determination Date
Refer to the Previous HEL determination available on file from your FSA office				

The Highly Erodible Land determination was completed in the

Section II - Wetlands

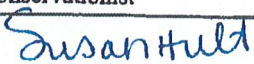
Fields in this section have had wetland determinations completed. See the Definition of Wetland Label Codes for additional information regarding allowable activities under the wetland conservation provisions of the Food Security Act and/or when wetland determinations are necessary to determine USDA program eligibility.

Field(s)	Wetland Label	Occurrence Year	Acres	Determination Date	Certification Date
1	PC/NW		57.4	1/7/2020	
1 A	W		0.3	1/7/2020	
2	PC/NW		62.1	1/7/2020	
3	PC/NW		119.4	1/7/2020	

The wetland determination was completed in the: Office It was delivered by: Mail On: 1/7/2020

Remarks:	
----------	--

I certify that the above determinations are correct and were conducted in accordance with policies and procedures contained in the National Food Security Act Manual.

Signature Designated Conservationist	Date
 Susan Hult	1/7/2020

The U.S. Department of Agriculture (USDA) prohibits discrimination in all of its programs and activities on the basis of race, color, national origin, age, disability, and where applicable, sex, marital status, familial status, parental status, religion, sexual orientation, political beliefs, genetic information, reprisal, or because all or part of an individual's income is derived from any public assistance program. (Not all prohibited bases apply to all programs.) Persons with disabilities who require alternative means for communication of program information (Braille, large print, audiotape, etc.) should contact USDA's TARGET Center at (202) 720-2600 (voice and TDD). To file a complaint of discrimination, write to USDA, Assistant Secretary for Civil Rights, Office of the Assistant Secretary for Civil Rights, 1400 Independence Avenue, S.W., Stop 9410, Washington, DC 20250-9410, or call tollfree at (866) 632-9992 (English) or (800) 877-8339 (TDD) or (866) 377-8642 (English Federal-relay) or (800) 845-6136 (Spanish Federal-relay). USDA is an equal opportunity provider and employer.

Customer:
Tract: 12276, Field 1
T105 R41 S20



Certified Wetland Determination

1/23/2020

This determination applies to Field 1 as the result of an appeal.



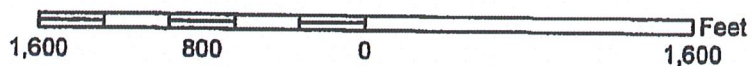
Murray County

Image Year: 2017

1:10,013 1 inch = 834 feet

Legend

- Not Evaluated
- PC/NW
- Townships
- Sections



This certified wetland determination/delineation has been conducted for the purpose of implementing the wetland conservation provisions of the Food Security Act of 1985. This determination/delineation may not be valid for identifying the extent of the Corps of Engineers' (COE's) Clean Water Act jurisdiction for this site. Other federal, state or local permits or restrictions may apply to activities impacting wetlands. Contact the US Fish and Wildlife Service for information concerning conservation easements. Contact the Local Governmental Unit (LGU) for State Wetland Conservation Act permits and Minnesota Department of Natural Resources for protected water permits prior to initiating wetland activities by completing the "Minnesota Joint Project Notification Form" available from the LGU.





FSA COPY

United States Department of Agriculture

January 23, 2020

Subject: Appeal Response and Final Technical Determination

Dear

In accordance with 7 CFR Part 614.7(c), this is a Final Technical Determination (FTD) in response to your appeal of a Preliminary Technical Determination issued under the Wetland Conservation (WC) Provisions (16 U.S.C 3801 et seq.).

Natural Resources
Conservation Service

Minnesota
Marshall Area
Office

800 East Main Street
Suite 400
Marshall, MN 56258

Ph: 507-537-0541
Fax 855-843-6841
www.mn.nrcs.usda.gov

In a phone call on January 14, 2020, you sought a review of Field 1A in Tract 12276 located in Section 20, Iona Township, Murray County, Minnesota.

Your appeal questioned the determination of Field 1A as a 0.3 acre Wetland (W) because there is existing drainage manipulation that was installed prior to December 23, 1985. I re-evaluated the site for best drained conditions and found the identified land meets the definition of a prior-converted cropland and/or non-wetland (7 CFR 12.5-b) and as such, is exempt from the USDA wetland compliance provisions.

The correct label for Field 1A is Prior-Converted Cropland and/or Non-Wetland (PC/NW). I have incorporated Field 1A into Field 1, which is now 57.7 acres labeled PC/NW.

Through this letter NRCS has issued a non-adverse final technical determination in accordance with the regulations found at 7 CFR Part 12. This final technical determination was conducted by the NRCS Area Office and is restricted to the areas specified in your request and identified on the attached map.

This determination is not adverse by definition (7 CFR 614.2c) and is not an appealable issue since producer eligibility is not in question. Likewise, this determination does not constitute an adverse decision under the National Appeals Division rules of procedure 7 CFR 11.3a.

You may request a review of your appeal rights by submitting a written request to the NRCS State Conservationist at the following address:

Troy Daniell
State Conservationist
375 Jackson Street, Suite 600
St. Paul, MN 55101-1854

Or you may request a review of your appeal rights from the National Appeals Division (NAD) at the following address:

NAO Eastern Regional Office
P.O. Box 68806
Indianapolis, Indiana 46268

Your written request to one of the above listed agencies, but not both, must be received no later than 30 days from the date that you received this notification. Should you choose to request an appeal, please clearly explain the reasons for your disagreement with this non-adverse decision.

This certified wetland determination/delineation has been conducted for the purpose of implementing the wetland conservation provisions of the Food Security Act of 1985. This determination/delineation may not be valid for identifying the extent of the Corps of Engineers' (COE's) Clean Water Act jurisdiction for this site. If you intend to conduct any activity that constitutes a discharge of dredged or fill material into wetlands or other waters, you should request a jurisdictional determination from the local office of the COE prior to starting the work. Other federal, state or local permits or restrictions may apply to activities impacting wetlands. Contact the US Fish and Wildlife Service for information concerning conservation easements. Contact the Local Governmental Unit (LGU) for State Wetland Conservation Act permits and Minnesota Department of Natural Resources for protected water permits prior to initiating wetland activities by completing the "Minnesota Joint Project Notification Form" available from the LGU.

The 2014 Farm Bill connected producer eligibility for Federal crop insurance premium subsidy to compliance with the wetland conservation provisions. Eligibility for most USDA programs is lost for any wetland conversions that have occurred after December 23, 1985. However, only wetland conversions that occur after February 7, 2014, result in ineligibility for Federal crop insurance premium subsidy.

If you have questions concerning this notification, please contact Susan Hult, Wetland Specialist, at 507-591-4274.

Sincerely,



Susan Hult, Wetland Specialist
USDA-NRCS, Marshall, MN Area Office

Enclosures: NRCS CPA-026E and Certified Wetland Determination Map

cc: County Executive Director, FSA, Slayton, Minnesota
District Conservationist, NRCS, Slayton, Minnesota

U.S.D.A.
Soil Conservation Service

SCS-CPA-026
(1-89)

1. Name and Address of Person

2. Date of Request

HIGHLY ERODIBLE LAND AND WETLAND CONSERVATION DETERMINATION

3. County

4. Name of USDA Agency or Person Requesting Determination

5. Farm No. and Tract No.

SECTION I - HIGHLY ERODIBLE LAND

8. Is soil survey now available for making a highly erodible land determination?	Yes	No	Field No.(s)	Total Acres
7. Are there highly erodible soil map units on this farm?				
8. List highly erodible fields that, according to ASCS records, were used to produce an agricultural commodity in any crop year during 1981-1985.				
9. List highly erodible fields that have been or will be converted for the production of agricultural commodities and, according to ASCS records, were not used for this purpose in any crop year during 1981-1985; and were not enrolled in a USDA set-aside or diversion program.				
10. This Highly Erodible Land determination was completed in the: Office <input type="checkbox"/> Field <input type="checkbox"/>				

NOTE: If you have highly erodible cropland fields, you may need to have a conservation plan developed for these fields. For further information, contact the local office of the Soil Conservation Service.

SECTION II - WETLAND

11. Are there hydric soils on this farm?	Yes	No	Field No.(s)	Total Wetland Acres
List field numbers and acres, where appropriate, for the following EXEMPTED WETLANDS:				
12. Wetlands (W), including abandoned wetlands, or Farmed Wetlands (FW). Wetlands may be farmed under natural conditions. Farmed Wetlands may be farmed and maintained in the same manner as they were prior to December 23, 1985, as long as they are not abandoned.				
13. Prior Converted Wetlands (PC) - The use, management, drainage, and alteration of prior converted wetlands (PC) are not subject to FSA unless the area reverts to wetland as a result of abandonment. You should inform SCS of any area to be used to produce an agricultural commodity that has not been cropped, managed, or maintained for 5 years or more.				
14. Artificial Wetlands (AW) - Artificial Wetlands includes Irrigation induced wetlands. These Wetlands are not subject to FSA.				
15. Minimal Effect Wetlands (MW) - These wetlands are to be farmed according to the minimal effect agreement signed at the time the minimal effect determination was made.				

NON-EXEMPTED WETLANDS:

16. Converted Wetlands (CW) - In any year that an agricultural commodity is planted on these Converted Wetlands, you will be ineligible for USDA benefits. If you believe that the conversion was commenced before December 23, 1985, or that the conversion was caused by a third party, contact the ASCS office to request a commenced or third party determination.				
--	--	--	--	--

17. The planned alteration measures on wetlands in fields _____ are considered maintenance and are in compliance with FSA.

18. The planned alteration measures on wetlands in fields _____ are not considered to be maintenance and if installed will cause the area to become a Converted Wetland (CW). See item 16 for information on CW.

19. This wetland determination was completed in the: Office Field

20. This determination was: Delivered Mailed To the Person on Date: _____

NOTE: If you do not agree with this determination, you may request a reconsideration from the person that signed this form in Block 22 below. The reconsideration is a prerequisite for any further appeal. The request for the reconsideration must be in writing and must state your reasons for the request. The request must be mailed or delivered within 15 days after this determination is mailed to or otherwise made available to you. Please see reverse side of the producer's copy of this form for more information on appeals procedure.

NOTE: If you intend to convert additional land to cropland or alter any wetlands, you must initiate another Form AD-1026 at the local office of ASCS. Abandonment is where land has not been cropped, managed, or maintained for 5 years or more. You should inform SCS if you plan to produce an agricultural commodity on abandoned wetlands.

21. Remarks

"This determination applies to the wetland conservation provisions of Food Security Act only. Permits may be required by other Federal state or local agencies or units of government on your farm."

22. Signature of SCS District Conservationist

23. Date

10-397

F-2269
T-9099

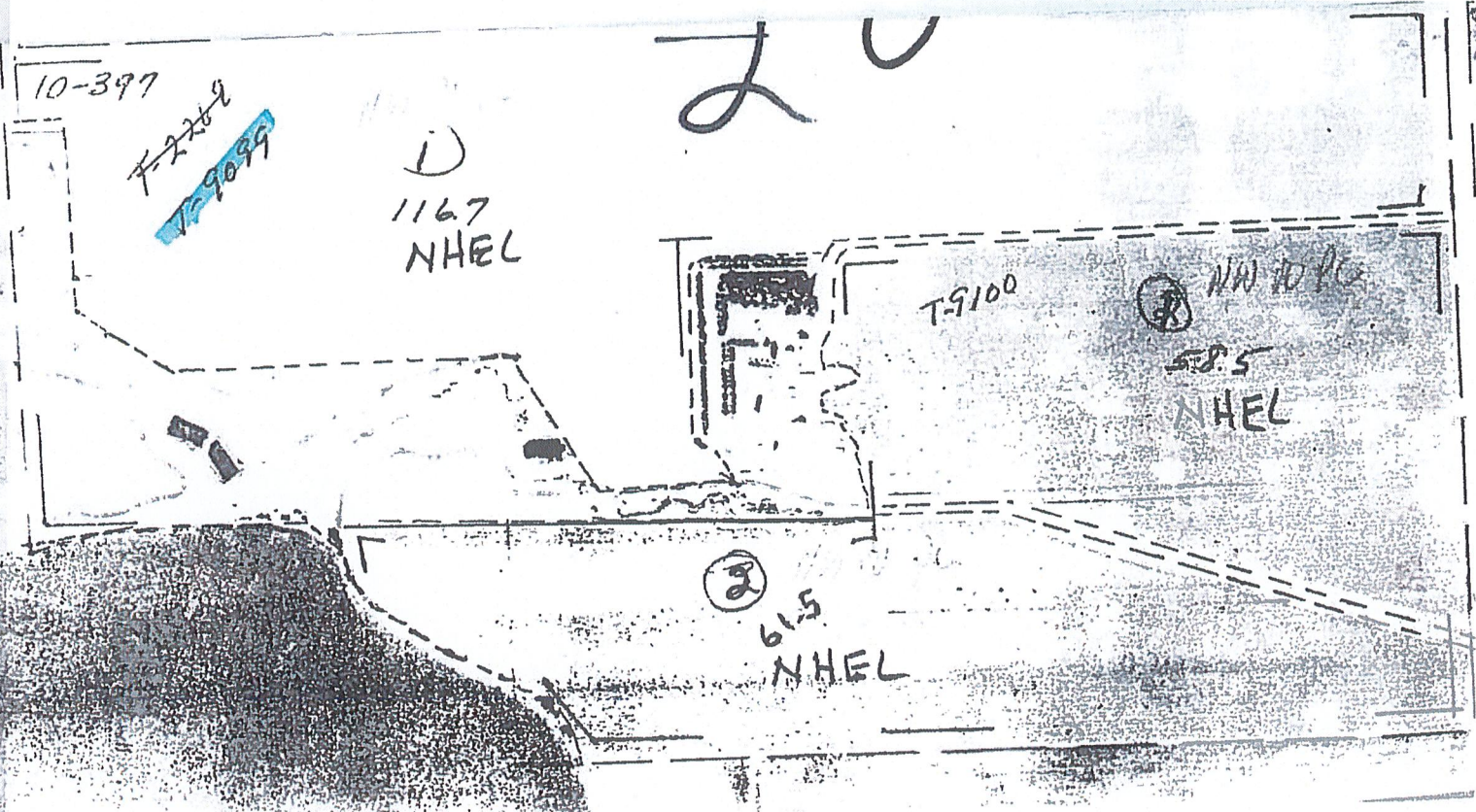
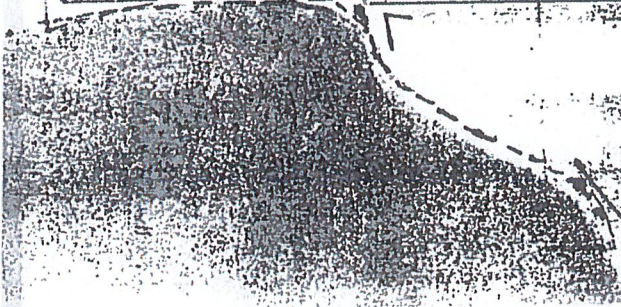
①
1167
NHEL

20

T-9100

Ⓚ NW 10 PC
50.5
NHEL

Ⓚ
61.5
NHEL



Customer:
Tract: 12276, Fields 1, 2, 3
T105 R41 S20



Certified Wetland Determination

1/7/2020

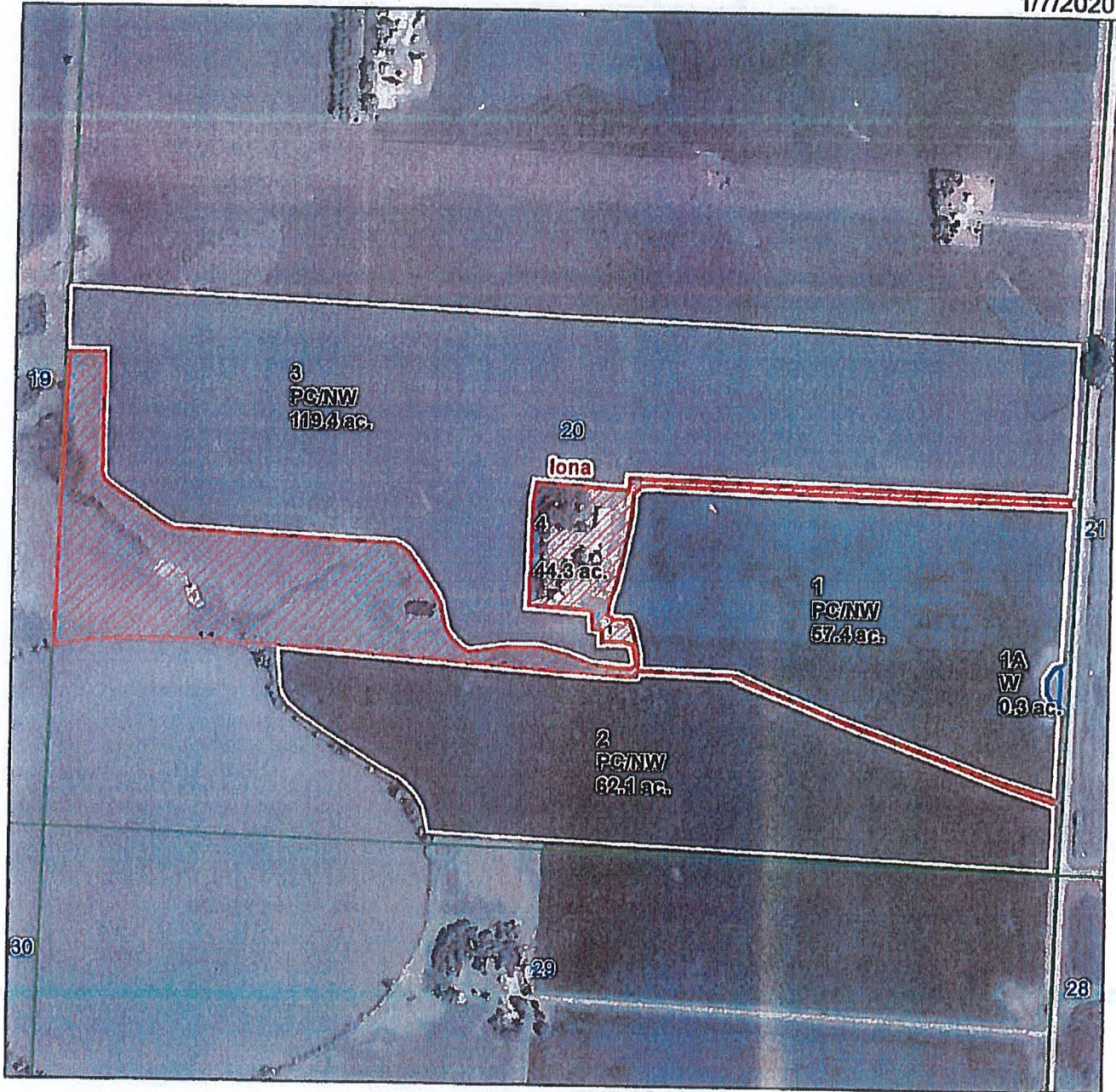


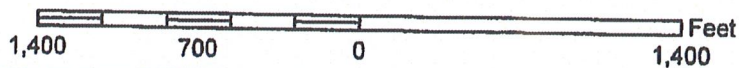
Image Year: 2008

Murray County

1:8,894 1 inch = 741 feet

Legend

- Not Evaluated
- PC/NW
- W
- Townships
- Sections



This certified wetland determination/delineation has been conducted for the purpose of implementing the wetland conservation provisions of the Food Security Act of 1985. This determination/delineation may not be valid for identifying the extent of the Corps of Engineers' (COE's) Clean Water Act jurisdiction for this site. Other federal, state or local permits or restrictions may apply to activities impacting wetlands. Contact the US Fish and Wildlife Service for information concerning conservation easements. Contact the Local Governmental Unit (LGU) for State Wetland Conservation Act permits and Minnesota Department of Natural Resources for protected water permits prior to initiating wetland activities by completing the "Minnesota Joint Project Notification Form" available from the LGU.





United States Department of Agriculture

CERTIFIED MAILING

January 7, 2020

RE: Certified wetland determination in response to AD-1026 request

Dear

Natural Resources
Conservation Service

Minnesota
Marshall Area
Office

800 East Main Street
Suite 400
Marshall, MN 56258

Ph: 507-537-0541
Fax 855-843-6841
www.mn.nrcs.usda.gov

The Natural Resources Conservation Service (NRCS) received from the Farm Service Agency (FSA) a Highly Erodible Land Conservation (HELIC) and-Wetland Conservation (WC) Certification form (form AD1026) dated April 25, 2019 to repair and add drainage manipulation in **Tract 12276 in Section 20, Iona Township, Murray County, Minnesota.** As a result, NRCS is issuing a Preliminary Technical Determination (PTD) in accordance with the wetland provisions of the Food Security Act of 1985, as amended. This PTD was conducted in accordance with the current federal wetland delineation procedures as found in the most current versions of the National Food Security Act Manual (NFSAM), the 1987 United States Army Corps of Engineers (USACE) Wetland Delineation Manual, Technical Report Y-87-1, the USACE Regional Supplements, and State Offsite Methods.

This PTD was conducted by NRCS Wetland Compliance staff on January 7, 2020. The attached CPA-026 form and Certified Wetland Determination map depict the areas where the requested wetland determination took place. The determination of Wetland (W) was made for the following reasons:

Presence of Hydrophytic Vegetation:

Under normal circumstances Field 1A supports a prevalence of plants that grow in water or in a substrate that is at least periodically deficient in oxygen during the growing season as a result of excessive water content.

Presence of Hydric Soils:

The soil on Field 1A is Spicer which contains Okoboji Series hydric inclusion for depressions. This soil is listed on the Murray County hydric soils list. In an un-drained condition, this soil is saturated, flooded, or ponded long enough during a growing season to develop an anaerobic condition that supports the growth and regeneration of hydrophytic vegetation.

Presence of Wetland Hydrology:

Field 1A is inundated or saturated by surface or groundwater at a frequency and duration sufficient to support a prevalence of hydrophytic vegetation typically adapted for life in saturated soil conditions.

This PTD meets the regulatory definition for an adverse decision. You may appeal this determination in accordance with the laws and federal regulations set forth at 7 CFR §614, the NRCS Appeals Procedures, 7 CFR §780, the Food Security Act Appeals Procedures, and

7 CFR §11, the National Appeals Division (NAD) Rules of Procedure, by acting on one of the two following options:

- You may request that the designated conservationist reconsider this determination by filing a written request no later than 30 calendar days after you receive this notice in accordance with the NRCS's appeal procedures found at 7 C.F.R. 614.7(b). If you request reconsideration, you have the right to be present during the field visit for an informal review with the decision maker. During the review you, and/or your representative may provide additional information and discuss the facts relating to the preliminary technical determination. If you choose to seek reconsideration, you may later appeal the determination to the FSA County Committee or the National Appeals Division (NAD). To request reconsideration, write to the designated conservationist at the following address and explain why you believe this determination is erroneous:

Susan Hult
NRCS Wetland Compliance Team
800 East Main Street, Suite 400
Marshall, MN 56258

- Mediation in accordance with 7 CFR 614.7(a)(with2) is available as part of NRCS's informal appeal process. Mediation may enable NRCS to narrow the issues and resolve the matter by mutual agreement. You may have to pay all or part of the cost of mediation. If you request mediation, the running of the timeframe in which you may file an appeal stops. When mediation closes, the clock restarts and you will have the balance of the days remaining in that period to file an appeal. To request mediation, you must submit your written request no later than 30 calendar days after you receive this notice. To request mediation, write to the Minnesota State mediation program at the following address and provide a copy of your request for mediation to NRCS.

Mary Nell Preisler
Farm Credit Mediation Program
1526 170th Avenue
Bejou, MN 56516
Phone: 218-935-5785

You may waive your rights to preliminary review and reconsideration or mediation in accordance with 7 C.F.R. Part 614.7(d) if you want an immediately-final wetland technical determination in order to address the on-site needs (i.e. restoration, mitigation). Provide notification of your intent to exercise your right to waive rights to preliminary review and reconsideration or mediation, in writing, to the NRCS State Conservationist at:

Troy Daniell
State Conservationist
USDA NRCS
375 Jackson Street, Suite 600
St. Paul, MN 55101-1854

If you do not select any of your preliminary appeal rights, this PTD will become a Final Technical Determination (FTD) 30 days after your receipt of the PTD in accordance with the wetland compliance provisions and the appeal regulations.

Once final, you may appeal the FTD within 30 days by acting on one of the two following options:

- You may appeal the determination to the FSA County Committee (COC) by filing a written request in accordance with the FSA appeal procedures found at 7 C.F.R. § 780. If you appeal to the COC, you have the right to an informal hearing which you or your representative may attend either personally or by telephone. To appeal, write to the County Committee at the following address and explain why you believe this determination is erroneous.

FSA County Committee
2740 22nd St., Suite 1
Slayton, MN 56172

- Alternatively, you may appeal the determination to the National Appeals Division (NAD) by filing a written request in accordance with the NAD appeal procedures found at 7 C.F.R. § 11. If you appeal to NAD, you have the right to a hearing that you or your representative may attend. Once a hearing with NAD begins, you waive any rights to reconsideration, an appeal to FSA, and mediation. To appeal, you must write to NAD at the following address, explain why you believe this determination is erroneous, and provide a copy to FSA. You must personally sign your written appeal to NAD and include a copy of this letter.

NAD Eastern Regional Office
P.O. Box 68806
Indianapolis, Indiana 46268

If you are the owner of this tract and have a tenant, I urge you to discuss this letter and accompanying NRCS-CPA-026 with your tenant. Likewise, if you are the tenant of this tract, I urge you to discuss this letter with your landlord.

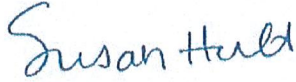
This certified wetland determination/delineation has been conducted for the purpose of implementing the wetland conservation provisions of the Food Security Act of 1985. This determination/delineation may not be valid for identifying the extent of the Corps of Engineers' (COE's) Clean Water Act jurisdiction for this site. If you intend to conduct any activity that constitutes a discharge of dredged or fill material into wetlands or other waters, you should request a jurisdictional determination from the local office of the COE prior to starting the work. Other federal, state or local permits or restrictions may apply to activities impacting wetlands. Contact the US Fish and Wildlife Service for information concerning conservation easements. Contact the Local Governmental Unit (LGU) for State Wetland Conservation Act permits and Minnesota Department of Natural Resources for protected water permits prior to initiating wetland activities by completing the "Minnesota Joint Project Notification Form" available from the LGU.

The 2014 Farm Bill connected producer eligibility for Federal crop insurance premium subsidy to compliance with the wetland conservation provisions. Eligibility for most USDA programs is lost for any wetland conversions that have occurred after December 23, 1985. However, only wetland conversions that occur after February 7, 2014, result in ineligibility for Federal crop insurance premium subsidy.

Lanners
Page 4 of 4

If you have questions concerning this notification, please contact Susan Hult, Wetland Specialist, at 507-591-4274

Sincerely,

A handwritten signature in blue ink that reads "Susan Hult". The signature is written in a cursive style with a large initial "S".

Susan Hult, Wetland Specialist
USDA-NRCS

Enclosures

cc: Dave Schreiber, County Executive Director, FSA, Slayton, MN
Cheryl Heard, District Conservationist, NRCS, Slayton, MN

U.S.D.A.
Soil Conservation Service

SCS-CPA-028
(1-88)

1. Name and Address of Person

2. Date of Request

**HIGHLY ERODIBLE LAND AND WETLAND
CONSERVATION DETERMINATION**

3. County

4. Name of USDA Agency or Person Requesting Determination

5. Farm No. and Tract No.

SECTION I - HIGHLY ERODIBLE LAND

6. Is soil survey now available for making a highly erodible land determination?	Yes	No	Field No.(s)	Total Acres
7. Are there highly erodible soil map units on this farm?	<input checked="" type="checkbox"/>	<input type="checkbox"/>		
8. List highly erodible fields that, according to ASCS records, were used to produce an agricultural commodity in any crop year during 1981-1985.				
9. List highly erodible fields that have been or will be converted for the production of agricultural commodities and, according to ASCS records, were not used for this purpose in any crop year during 1981-1985; and were not enrolled in a USDA set-aside or diversion program.				

10. This Highly Erodible Land determination was completed in the: Office Field

NOTE: If you have highly erodible cropland fields, you may need to have a conservation plan developed for these fields. For further information, contact the local office of the Soil Conservation Service.

SECTION II - WETLAND

11. Are there hydric soils on this farm?	Yes	No	Field No.(s)	Total Wetland Acres
List field numbers and acres, where appropriate, for the following EXEMPTED WETLANDS:				
12. Wetlands (W), including abandoned wetlands, or Farmed Wetlands (FW). Wetlands may be farmed under natural conditions. Farmed Wetlands may be farmed and maintained in the same manner as they were prior to December 23, 1985, as long as they are not abandoned.				
13. Prior Converted Wetlands (PC) - The use, management, drainage, and alteration of prior converted wetlands (PC) are not subject to FSA unless the area reverts to wetland as a result of abandonment. You should inform SCS of any area to be used to produce an agricultural commodity that has not been cropped, managed, or maintained for 5 years or more.				
14. Artificial Wetlands (AW) - Artificial Wetlands includes Irrigation Induced wetlands. These Wetlands are not subject to FSA.				
15. Minimal Effect Wetlands (MW) - These wetlands are to be farmed according to the minimal effect agreement signed at the time the minimal effect determination was made.				

NON-EXEMPTED WETLANDS:

16. Converted Wetlands (CW) - In any year that an agricultural commodity is planted on these Converted Wetlands, you will be ineligible for USDA benefits. If you believe that the conversion was commenced before December 23, 1985, or that the conversion was caused by a third party, contact the ASCS office to request a commenced or third party determination.				
--	--	--	--	--

17. The planned alteration measures on wetlands in fields _____ are considered maintenance and are in compliance with FSA.

18. The planned alteration measures on wetlands in fields _____ are not considered to be maintenance and if installed will cause the area to become a Converted Wetland (CW). See item 16 for information on CW.

19. This wetland determination was completed in the: Office Field

20. This determination was: Delivered Mailed To the Person on Date: 1/14

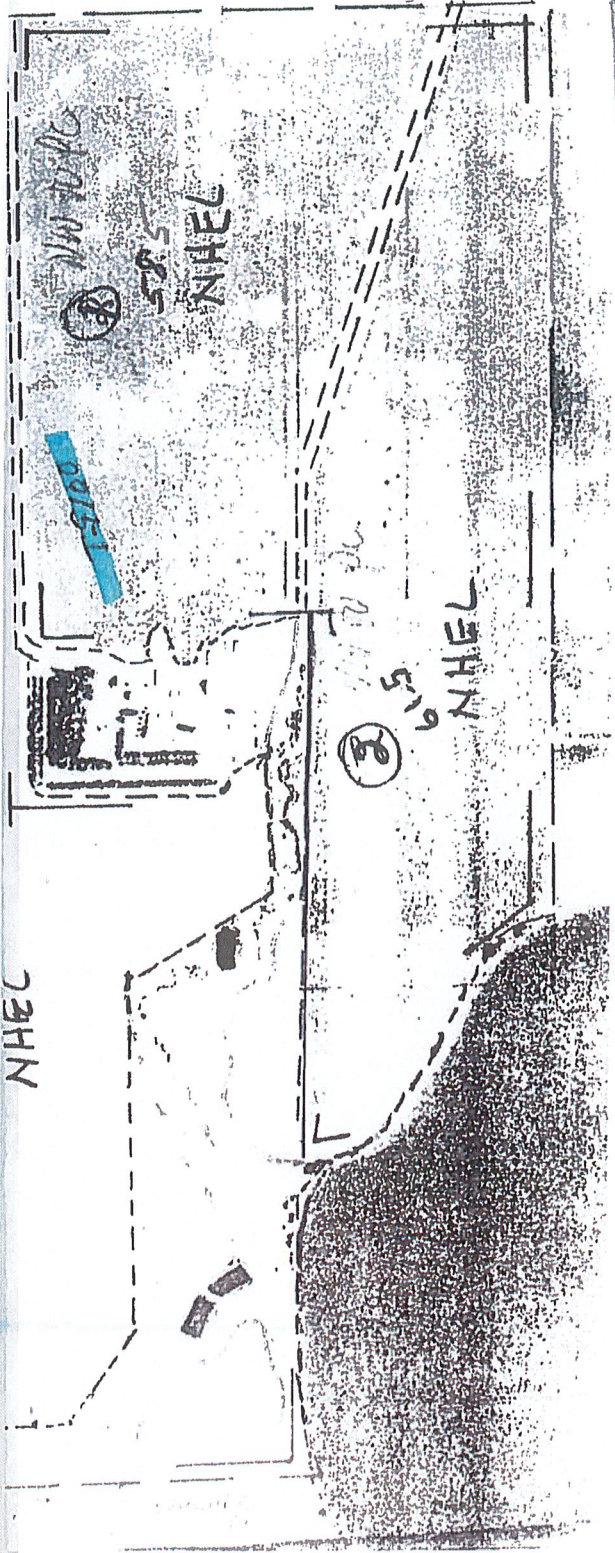
NOTE: If you do not agree with this determination, you may request a reconsideration from the person that signed this form in Block 22 below. The reconsideration is a prerequisite for any further appeal. The request for the reconsideration must be in writing and must state your reasons for the request. The request must be mailed or delivered within 15 days after this determination is mailed to or otherwise made available to you. Please see reverse side of the producer's copy of this form for more information on appeals procedure.

NOTE: If you intend to convert additional land to cropland or alter any wetlands, you must initiate another Form AD-1026 at the local office of ASCS. Abandonment is where land has not been cropped, managed, or maintained for 5 years or more. You should inform SCS if you plan to produce an agricultural commodity on abandoned wetlands.

21. Remarks

This determination applies to the wetland conservation provisions of Food Security Act only. Permits no other wetland conservation provisions of Federal state or local agencies or units of government for wetland conservation activities on your farm.

22. Signature of SCS District Conservationist





United States Department of Agriculture

Natural Resources Conservation Service

NRCS-CPA-026E 9/2012

HIGHLY ERODIBLE LAND AND WETLAND CONSERVATION DETERMINATION

Name, Address, Request Date: 1/14/2020, County: Murray, Agency or Person Requesting Determination: Operator, Tract No: 12276, FSA Farm No: 2594

Section I - Highly Erodible Land

Is a soil survey now available for making a highly erodible land determination? Are there highly erodible soil map units on this farm?

Fields in this section have undergone a determination of whether they are highly erodible land (HEL) or not; fields for which an HEL Determination has not been completed are not listed. In order to be eligible for USDA benefits, a person must be using an approved conservation system on all HEL.

Table with columns: Field(s), HEL(Y/N), Sodbust (Y/N), Acres, Determination Date. Content: Refer to the Previous HEL determination available on file from your FSA office

The Highly Erodible Land determination was completed in the

Section II - Wetlands

Fields in this section have had wetland determinations completed. See the Definition of Wetland Label Codes for additional information regarding allowable activities under the wetland conservation provisions of the Food Security Act and/or when wetland determinations are necessary to determine USDA program eligibility.

Table with columns: Field(s), Wetland Label, Occurrence Year, Acres, Determination Date, Certification Date. Row 1: 1, PC/NW, 57.7, 1/23/2020, 1/23/2020

The wetland determination was completed in the: Office It was delivered by: Mail On: 1/23/2020

Remarks: This determination is the result of an appeal. Field 1A was a 0.3 acre Wetland that has been determined to be Prior Converted and has been incorporated into Field 1. Field 1 is now 57.7 acres labeled PC/NW.

I certify that the above determinations are correct and were conducted in accordance with policies and procedures contained in the National Food Security Act Manual.

Signature Designated Conservationist: Susan Hult, Date: 1/23/2020

The U.S. Department of Agriculture (USDA) prohibits discrimination in all of its programs and activities on the basis of race, color, national origin, age, disability, and where applicable, sex, marital status, familial status, parental status, religion, sexual orientation, political beliefs, genetic information, reprisal, or because all or part of an individual's income is derived from any public assistance program. (Not all prohibited bases apply to all programs.) Persons with disabilities who require alternative means for communication of program information (Braille, large print, audiotape, etc.) should contact USDA's TARGET Center at (202) 720-2600 (voice and TDD). To file a complaint of discrimination, write to USDA, Assistant Secretary for Civil Rights, Office of the Assistant Secretary for Civil Rights, 1400 Independence Avenue, S.W., Stop 9410, Washington, DC 20250-9410, or call tollfree at (866) 632-9992 (English) or (800) 877-8339 (TDD) or (866) 377-8642 (English Federal-relay) or (800) 845-6136 (Spanish Federal-relay). USDA is an equal opportunity provider and employer.