

Customer: Glynn Family Farms, LLC

Tract: 1500  
T109 R40 S06  
Monroe 06

# Certified Wetland Determination



4/23/2018

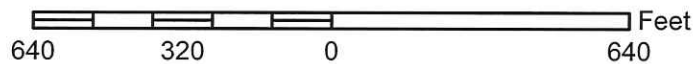
Fields 1 and 4 were determined on May 21, 2007.  
This determination applies to Fields 2 and 3 only.



Image Year: 2008

## Lyon County

1:4,954 1 inch = 413 feet

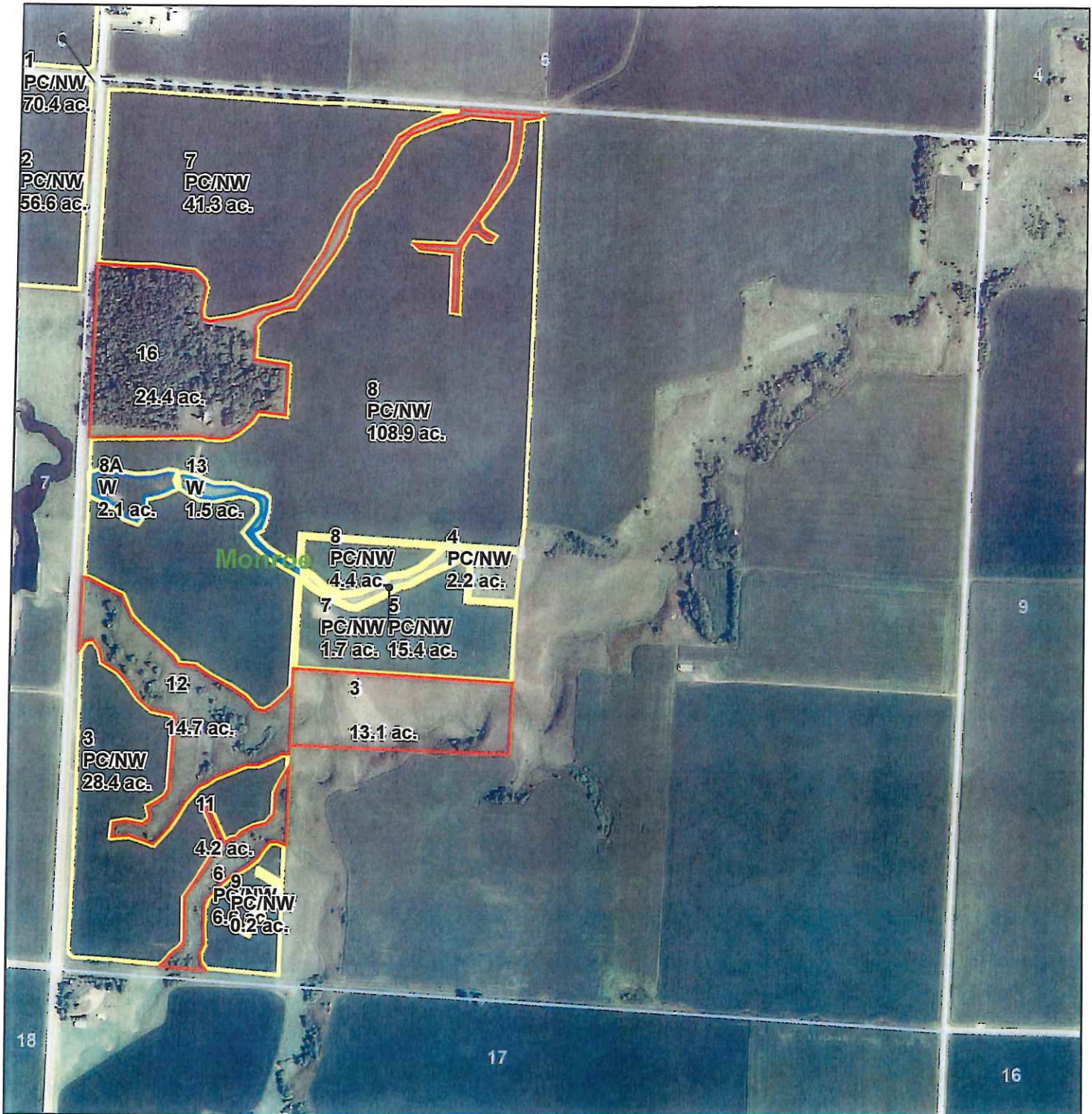


Legend	
	PC/NW
	W
	NW

*This certified wetland determination/delineation has been conducted for the purpose of implementing the wetland conservation provisions of the Food Security Act of 1985. This determination/delineation may not be valid for identifying the extent of the Corps of Engineers' (COE's) Clean Water Act jurisdiction for this site. Other federal, state or local permits or restrictions may apply to activities impacting wetlands. Contact the US Fish and Wildlife Service for information concerning conservation easements. Contact the Local Governmental Unit (LGU) for State Wetland Conservation Act permits and Minnesota Department of Natural Resources for protected water permits prior to initiating wetland activities by completing the "Minnesota Joint Project Notification Form" available from the LGU.*



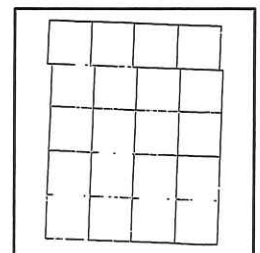
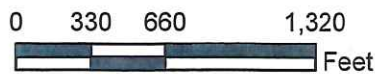
### Certified Wetland Determination



Missing Label	CME	MWM
PC/NW	CPD	NW
W	CW	NWNAD
FW	CWTE	PC
FWP	MIW	TP
AW	MW	WX
	Townships	Sections



1:9,787



Maps are for graphical purposes only. They do not represent a legal survey. While every effort has been made to ensure that these data are accurate and reliable within the limits of the current state of the art, NRCS cannot assume liability for any damages caused by any errors or omissions in the data, nor as a result of the failure of the data to function on a particular system. NRCS makes no warranty, expressed or implied, nor does the fact of distribution constitute such a warranty.