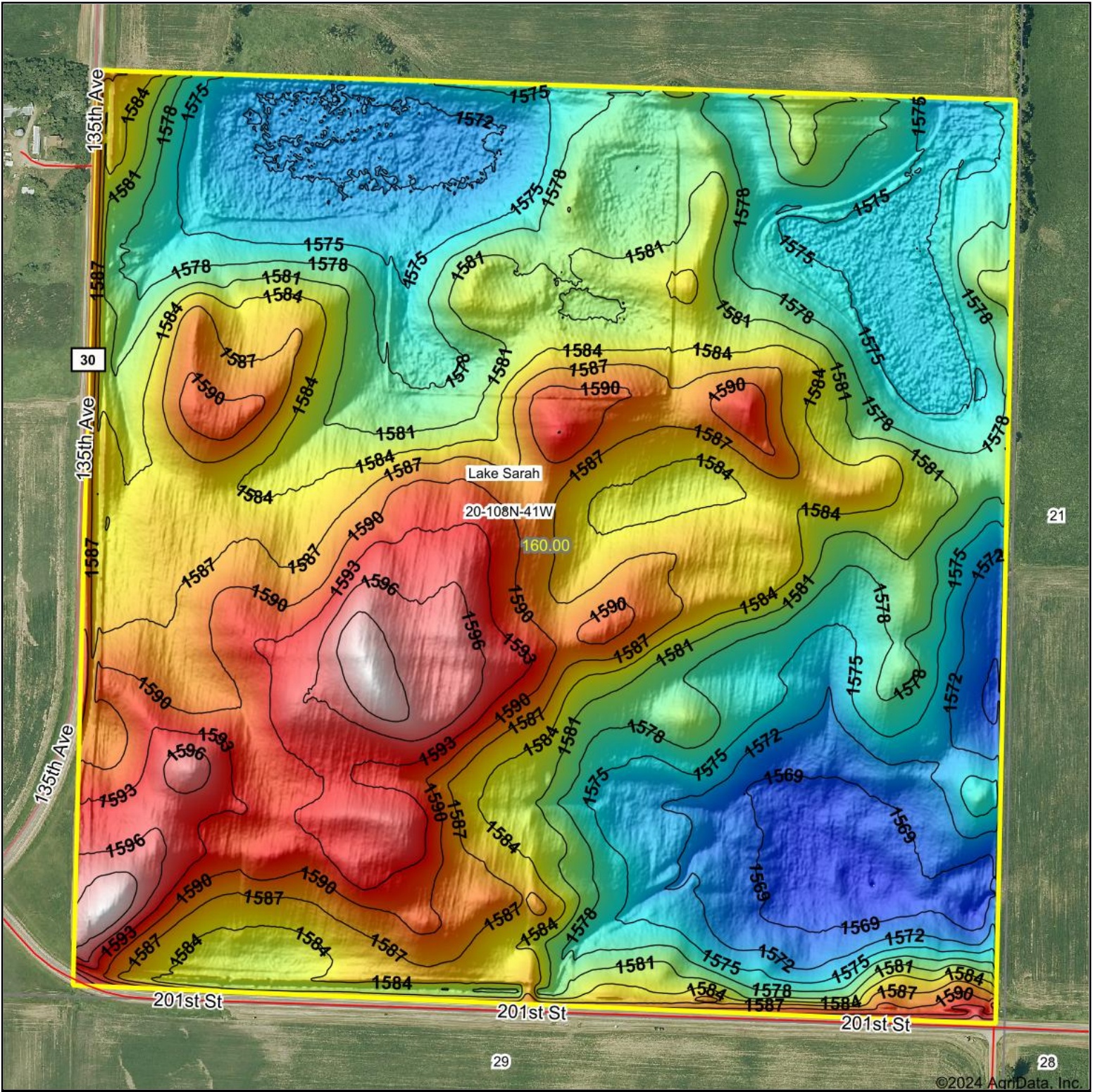


# Topography Hillshade



|  |  |                        |
|--|--|------------------------|
| <p>Low Elevation High</p>  | <p>Source: USGS 1 meter dem<br/>             Interval(ft): 3<br/>             Min: 1,566.2<br/>             Max: 1,602.0<br/>             Range: 35.8<br/>             Average: 1,582.1<br/>             Standard Deviation: 7.68 ft</p> | <p>0ft 445ft 891ft</p> |
| <p>NORTHWESTERN FARM MANAGEMENT CO.<br/>             Maps Provided By:<br/> <br/>             CUSTOMIZED ONLINE MAPPING<br/>             © AgriData, Inc. 2023 www.AgriDataInc.com</p> | <p> <br/>             8/20/2024<br/> <b>20-108N-41W</b><br/> <b>Murray County</b><br/> <b>Minnesota</b><br/>             Boundary Center: 44° 8' 30.48, -95° 47' 21.65</p>   |                        |