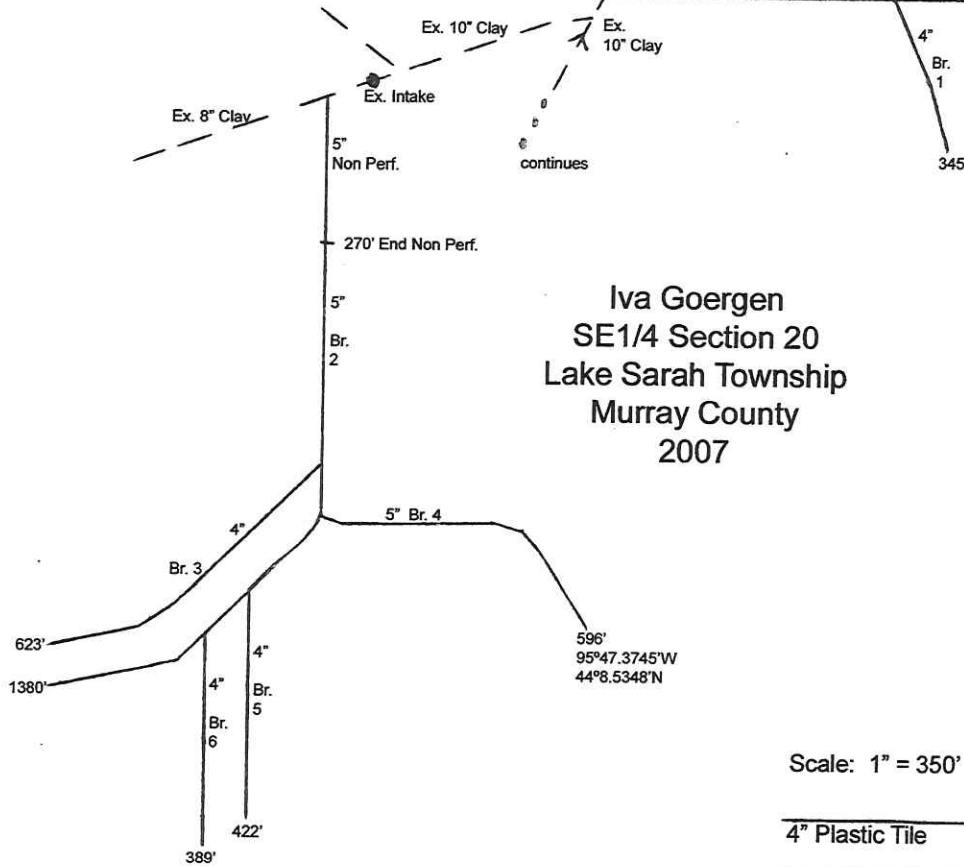


Terry Carlson
S1/2 of NE1/4
Section 20



County Road
*30



Iva Goergen
SE1/4 Section 20
Lake Sarah Township
Murray County
2007

Scale: 1" = 350'

4" Plastic Tile

5" Plastic Tile

Existing Tile

Map By:
Loosbrock Construction
PO Box 98
Wilmont, MN 56185
(507) 926-5368

GPS Map: This map was generated using a global positioning system. If you need more detailed coordinates, or the raw GPS data for your yield, fertility, or soil map overlays, let us know.

Tile lines GPS on centerline.

Co. Rd 16 - 201st St.