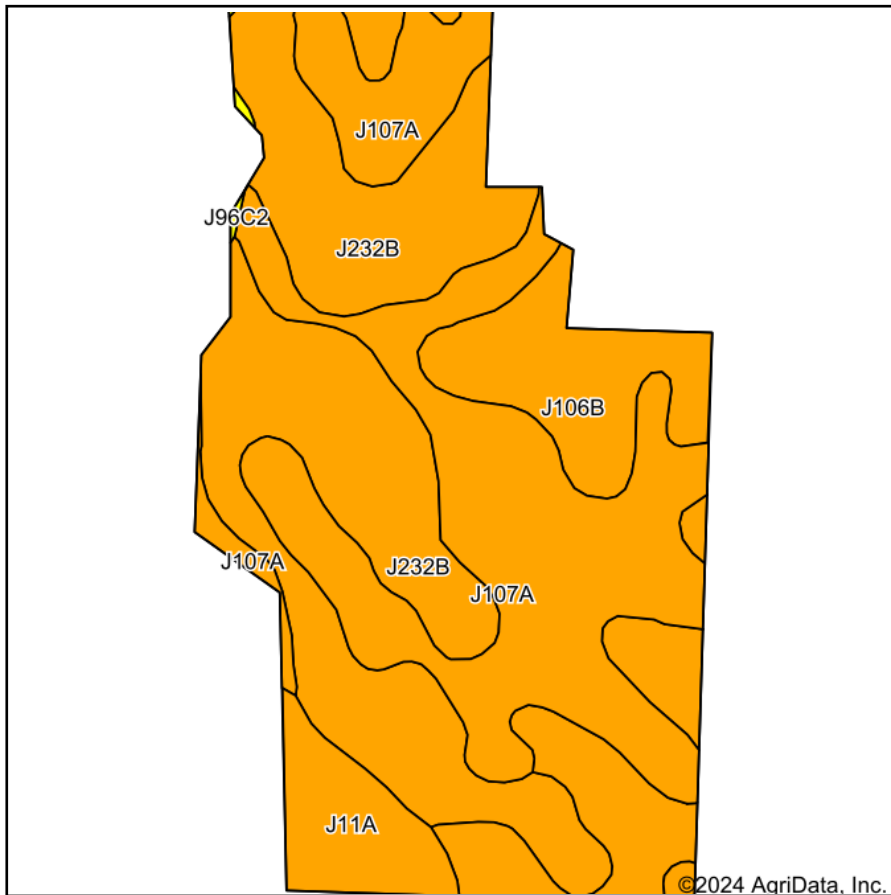
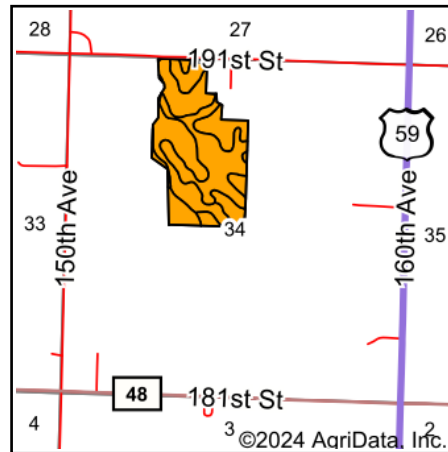


# Soils Map



Soils data provided by USDA and NRCS.



State: **Minnesota**  
 County: **Murray**  
 Location: **34-108N-41W**  
 Township: **Lake Sarah**  
 Acres: **68.24**  
 Date: **8/12/2024**



Area Symbol: MN101, Soil Area Version: 23

Code	Soil Description	Acres	Percent of field	Non-Irr Class Legend	Non-Irr Class *c	Productivity Index
J232B	Barnes, occasional saturation-Buse-Arvilla complex, 2 to 6 percent slopes	25.94	38.0%		Ile	74
J107A	Lakepark-Roliss-Parnell, depressional, complex, 0 to 3 percent slopes	25.14	36.8%		Ilw	93
J106B	Barnes, occasional saturation-Buse-Svea complex, 1 to 6 percent slopes	12.83	18.8%		Ile	88
J11A	Vallers clay loam, 0 to 2 percent slopes	4.20	6.2%		Ilw	90
J96C2	Barnes-Buse complex, 6 to 12 percent slopes, moderately eroded	0.13	0.2%		IVe	80
<b>Weighted Average</b>					<b>2.00</b>	<b>84.6</b>

\*c: Using Capabilities Class Dominant Condition Aggregation Method

Soils data provided by USDA and NRCS.