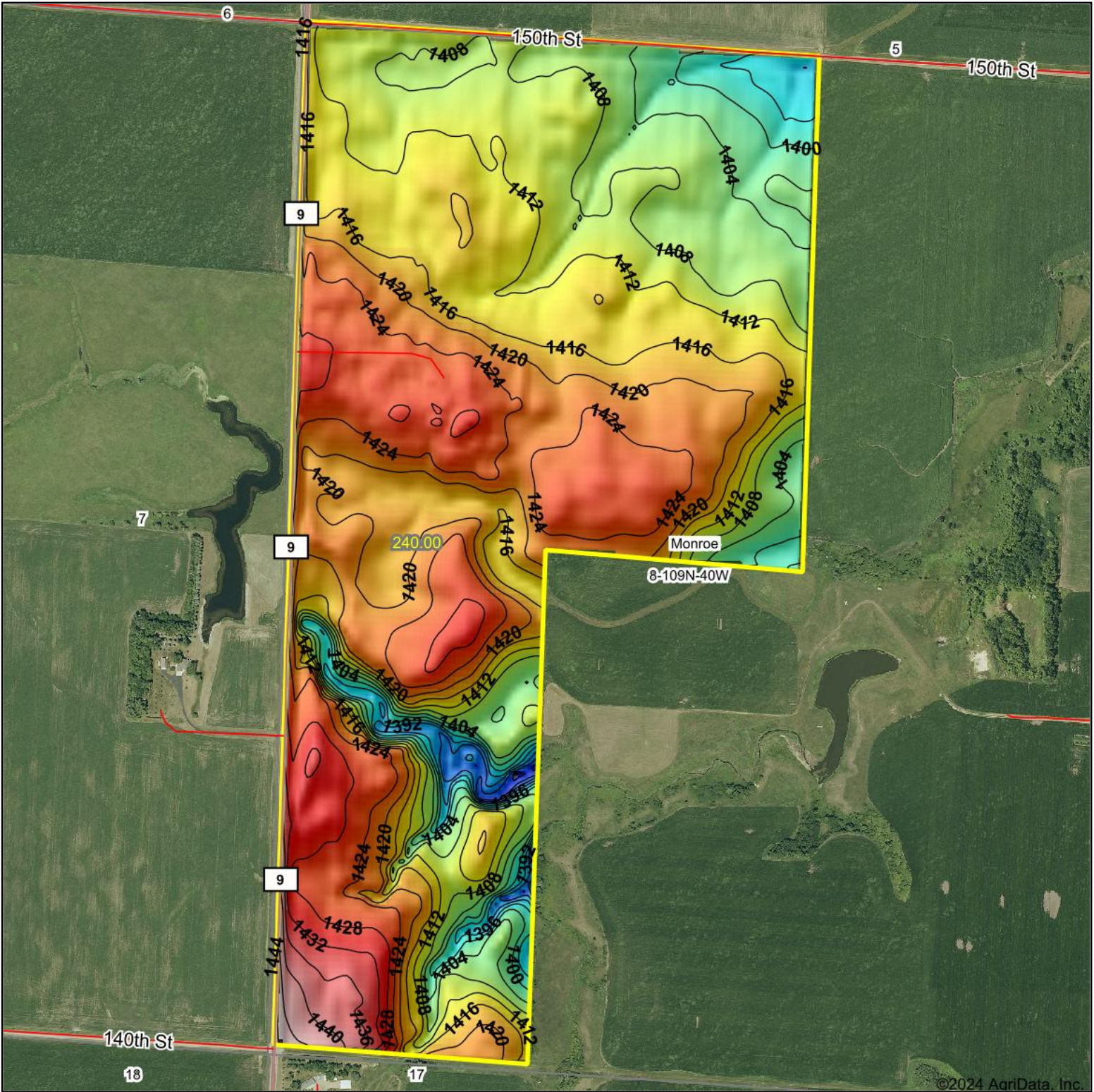


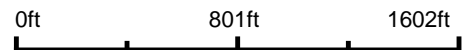
Topography Hillshade



©2024 AgriData, Inc.



Source: USGS 10 meter dem



Interval(ft): 4

Min: 1,378.0

Max: 1,447.7

Range: 69.7

Average: 1,415.4

Standard Deviation: 9.94 ft



8-109N-40W
Lyon County
Minnesota

Boundary Center: 44° 15' 39.06, -95° 41' 21.41



Maps Provided By:



© AgriData, Inc. 2023

www.AgriDataInc.com