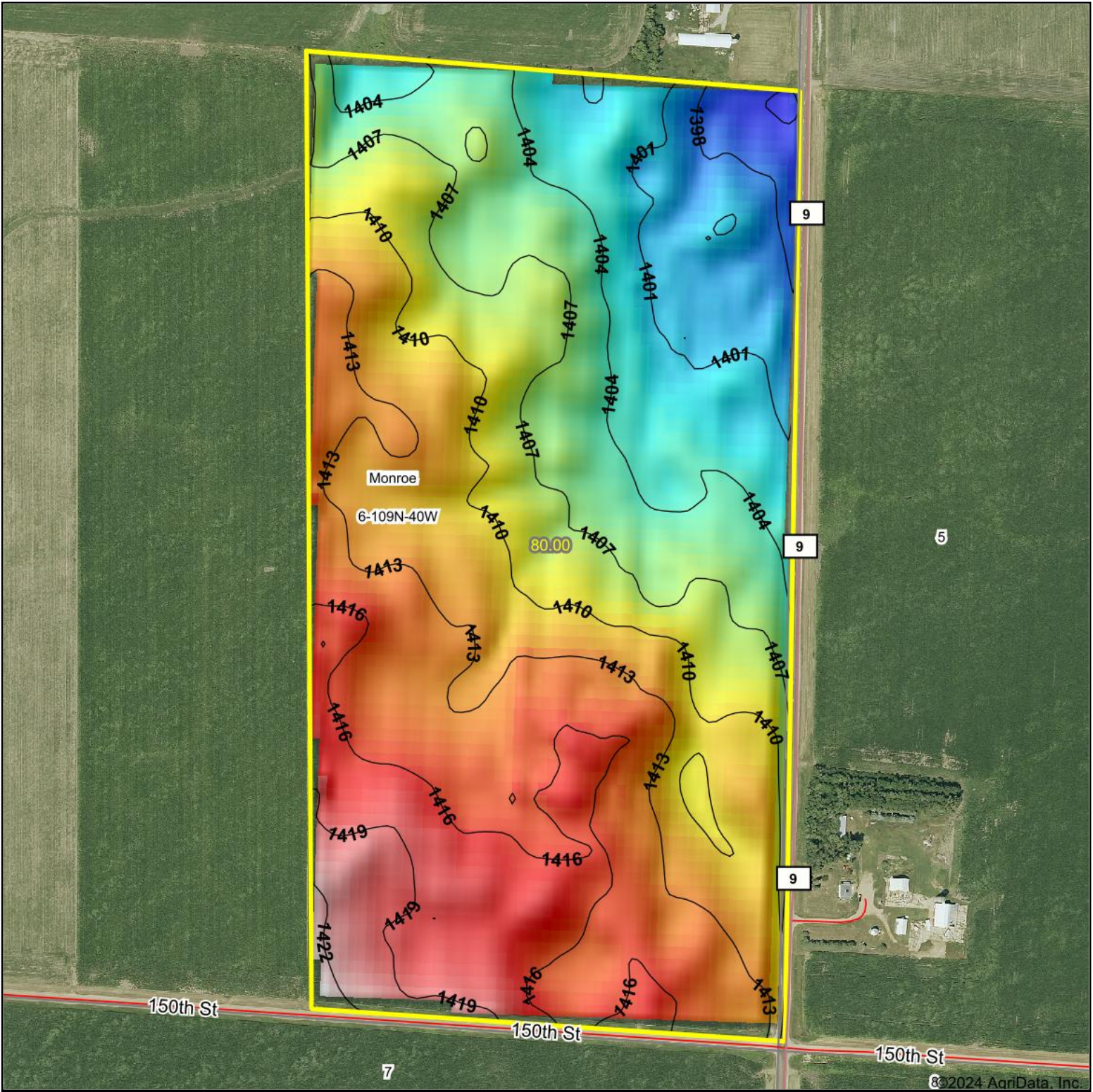


Topography Hillshade



<p>Low Elevation High</p>	<p>Source: USGS 10 meter dem Interval(ft): 3 Min: 1,394.6 Max: 1,424.6 Range: 30.0 Average: 1,409.7 Standard Deviation: 6.07 ft</p>	<p>0ft 427ft 854ft</p> <p>8/2024</p> <p>6-109N-40W Lyon County Minnesota</p> <p>Boundary Center: 44° 16' 18.7, -95° 41' 49.2</p>
---------------------------	---	---



Maps Provided By:



© AgriData, Inc. 2023 www.AgriDataInc.com