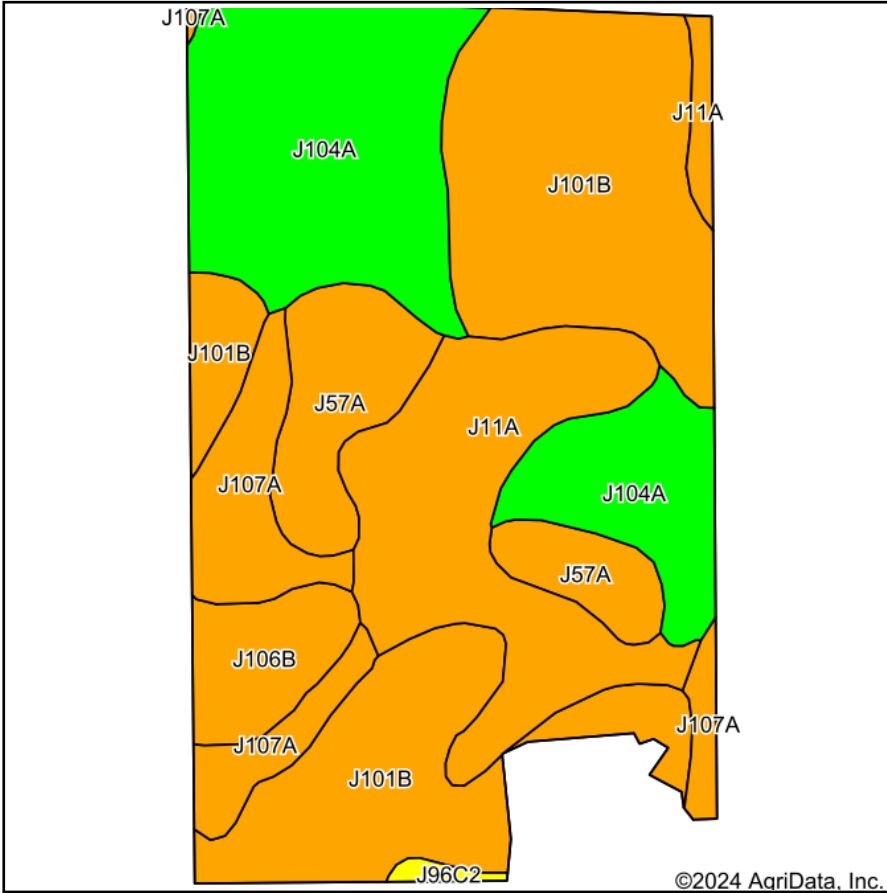
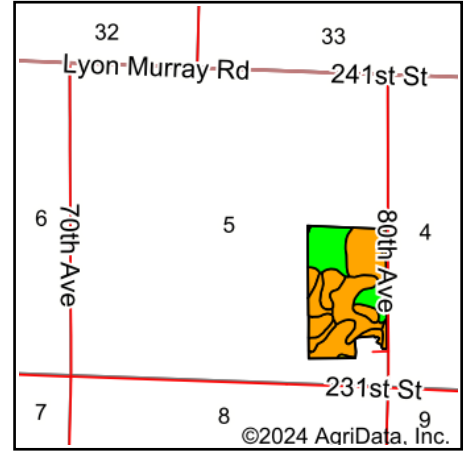


Soils Map



Soils data provided by USDA and NRCS.



State: **Minnesota**
 County: **Murray**
 Location: **5-108N-42W**
 Township: **Skandia**
 Acres: **61.16**
 Date: **6/11/2024**



Area Symbol: MN101, Soil Area Version: 23

Code	Soil Description	Acres	Percent of field	Non-Irr Class Legend	Non-Irr Class *c	Productivity Index
J101B	Hokans-Svea complex, 1 to 4 percent slopes	21.15	34.5%		Ile	98
J104A	Svea loam, 1 to 3 percent slopes	15.38	25.1%		Ie	99
J11A	Vallers clay loam, 0 to 2 percent slopes	10.74	17.6%		IIw	90
J57A	Balaton loam, 1 to 3 percent slopes	5.60	9.2%		IIs	96
J107A	Lakepark-Roliss-Parnell, depressional, complex, 0 to 3 percent slopes	5.31	8.7%		IIw	93
J106B	Barnes, occasional saturation-Buse-Svea complex, 1 to 6 percent slopes	2.73	4.5%		Ile	88
J96C2	Barnes-Buse complex, 6 to 12 percent slopes, moderately eroded	0.25	0.4%		IVe	80
Weighted Average					1.76	95.7

*c: Using Capabilities Class Dominant Condition Aggregation Method