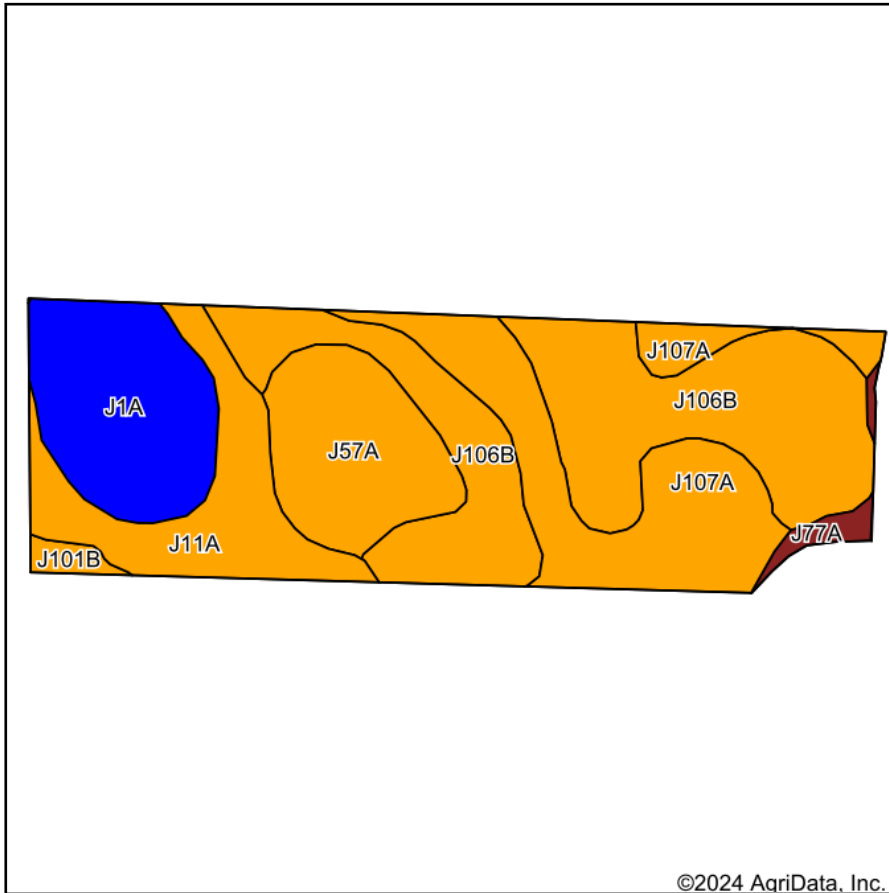
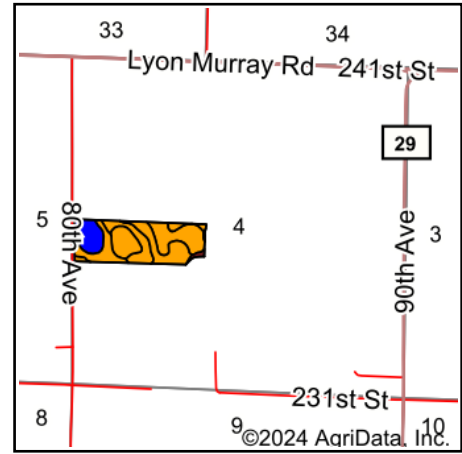


# Soils Map



Soils data provided by USDA and NRCS.



State: **Minnesota**  
 County: **Murray**  
 Location: **4-108N-42W**  
 Township: **Skandia**  
 Acres: **30.46**  
 Date: **6/11/2024**



Maps Provided By:



Area Symbol: MN101, Soil Area Version: 23

Code	Soil Description	Acres	Percent of field	Non-Irr Class Legend	Non-Irr Class *c	Productivity Index
J106B	Barnes, occasional saturation-Buse-Svea complex, 1 to 6 percent slopes	10.72	35.3%		Ile	88
J107A	Lakepark-Roliss-Parnell, depressional, complex, 0 to 3 percent slopes	6.18	20.3%		IIw	93
J1A	Parnell silty clay loam, depressional, 0 to 1 percent slopes	4.70	15.4%		IIIw	86
J57A	Balaton loam, 1 to 3 percent slopes	4.03	13.2%		IIs	96
J11A	Vallers clay loam, 0 to 2 percent slopes	4.02	13.2%		IIw	90
J77A	Lamoure silty clay loam, 0 to 2 percent slopes, frequently flooded	0.47	1.5%		Vw	20
J101B	Hokans-Svea complex, 1 to 4 percent slopes	0.34	1.1%		Ile	98
<b>Weighted Average</b>					<b>2.20</b>	<b>89.1</b>

\*c: Using Capabilities Class Dominant Condition Aggregation Method