

- Unless otherwise noted:  
 Shares are 100% operator  
 Crops are non-irrigated  
 Corn = yellow for grain  
 Soybeans = common soybeans for grain  
 Wheat = HRS, HRW = Grain  
 Sunflower = Oil, Non-Oil = Grain  
 Oats and Barley = Spring for grain  
 Rye = for grain  
 Peas = process  
 Alfalfa, Mixed Forage AGM, GMA, IGS = for forage  
 Beans = Dry Edible  
 NAG = for GZ  
 Canola = Spring for seed

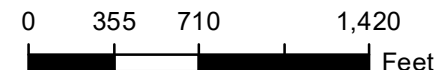
**Common Land Unit**

- Cropland
- Tract Boundary

**Wetland Determination Identifiers**

- Restricted Use
- ▼ Limited Restrictions
- Exempt from Conservation Compliance Provisions

Tract Cropland Total: 77.62 acres



- Unless otherwise noted:  
 Shares are 100% operator  
 Crops are non-irrigated  
 Corn = yellow for grain  
 Soybeans = common soybeans for grain  
 Wheat = HRS, HRW = Grain  
 Sunflower = Oil, Non-Oil = Grain  
 Oats and Barley = Spring for grain  
 Rye = for grain  
 Peas = process  
 Alfalfa, Mixed Forage AGM, GMA, IGS = for forage  
 Beans = Dry Edible  
 NAG = for GZ  
 Canola = Spring for seed

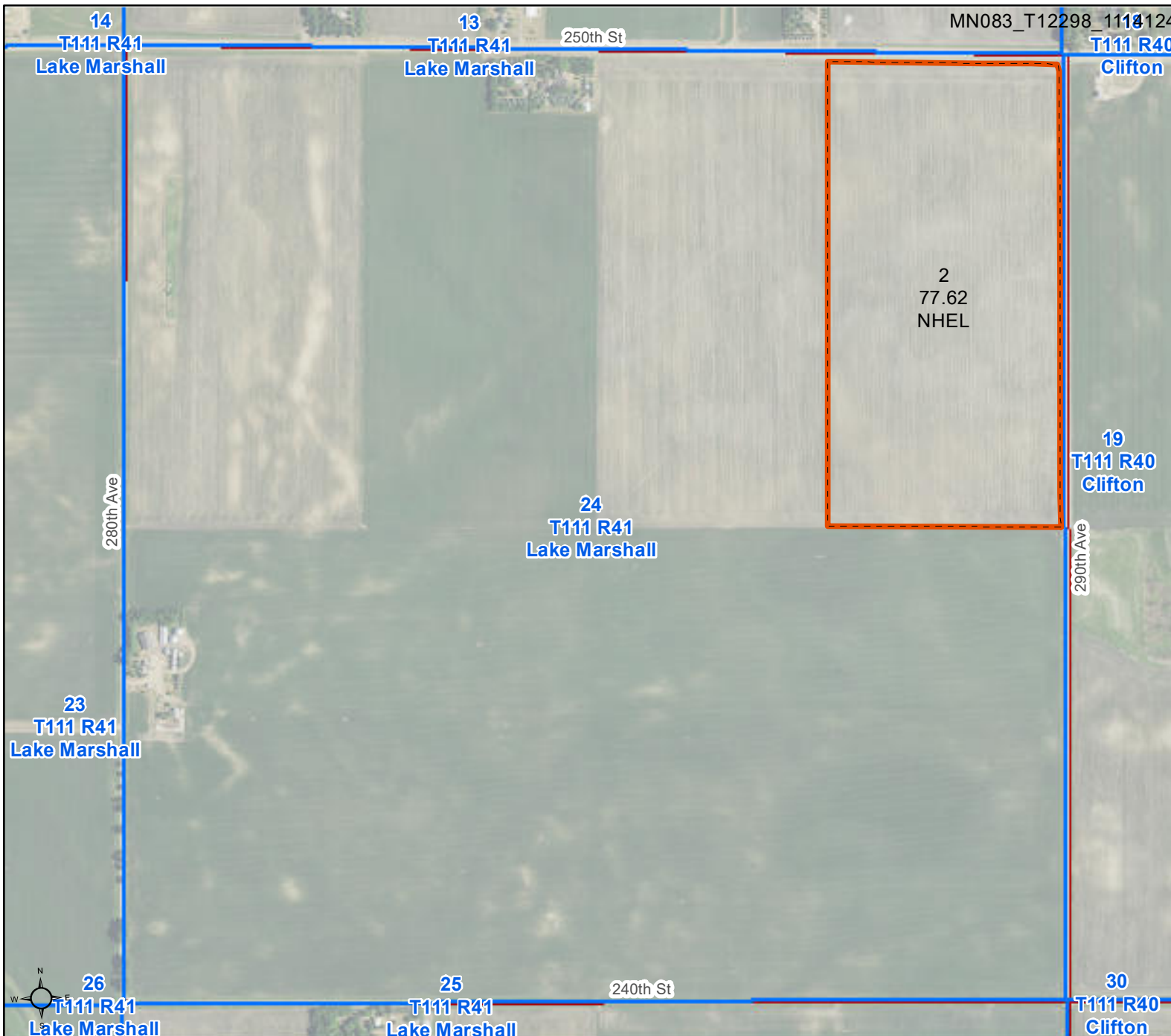
**Common Land Unit**

- Cropland
- Tract Boundary

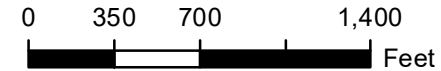
**Wetland Determination Identifiers**

- Restricted Use
- ▼ Limited Restrictions
- Exempt from Conservation Compliance Provisions

Tract Cropland Total: 77.62 acres



United States Department of Agriculture (USDA) Farm Service Agency (FSA) maps are for FSA Program administration only. This map does not represent a legal survey or reflect actual ownership; rather it depicts the information provided directly from the producer and/or National Agricultural Imagery Program (NAIP) imagery. The producer accepts the data 'as is' and assumes all risks associated with its use. USDA-FSA assumes no responsibility for actual or consequential damage incurred as a result of any user's reliance on this data outside FSA Programs. Wetland identifiers do not represent the size, shape, or specific determination of the area. Refer to your original determination (CPA-026 and attached maps) for exact boundaries and determinations or contact USDA Natural Resources Conservation Service (NRCS). This map displays the 2021 NAIP imagery.



- Unless otherwise noted:  
 Shares are 100% operator  
 Crops are non-irrigated  
 Corn = yellow for grain  
 Soybeans = common soybeans for grain  
 Wheat = HRS, HRW = Grain  
 Sunflower = Oil, Non-Oil = Grain  
 Oats and Barley = Spring for grain  
 Rye = for grain  
 Peas = process  
 Alfalfa, Mixed Forage AGM, GMA, IGS = for forage  
 Beans = Dry Edible  
 NAG = for GZ  
 Canola = Spring for seed

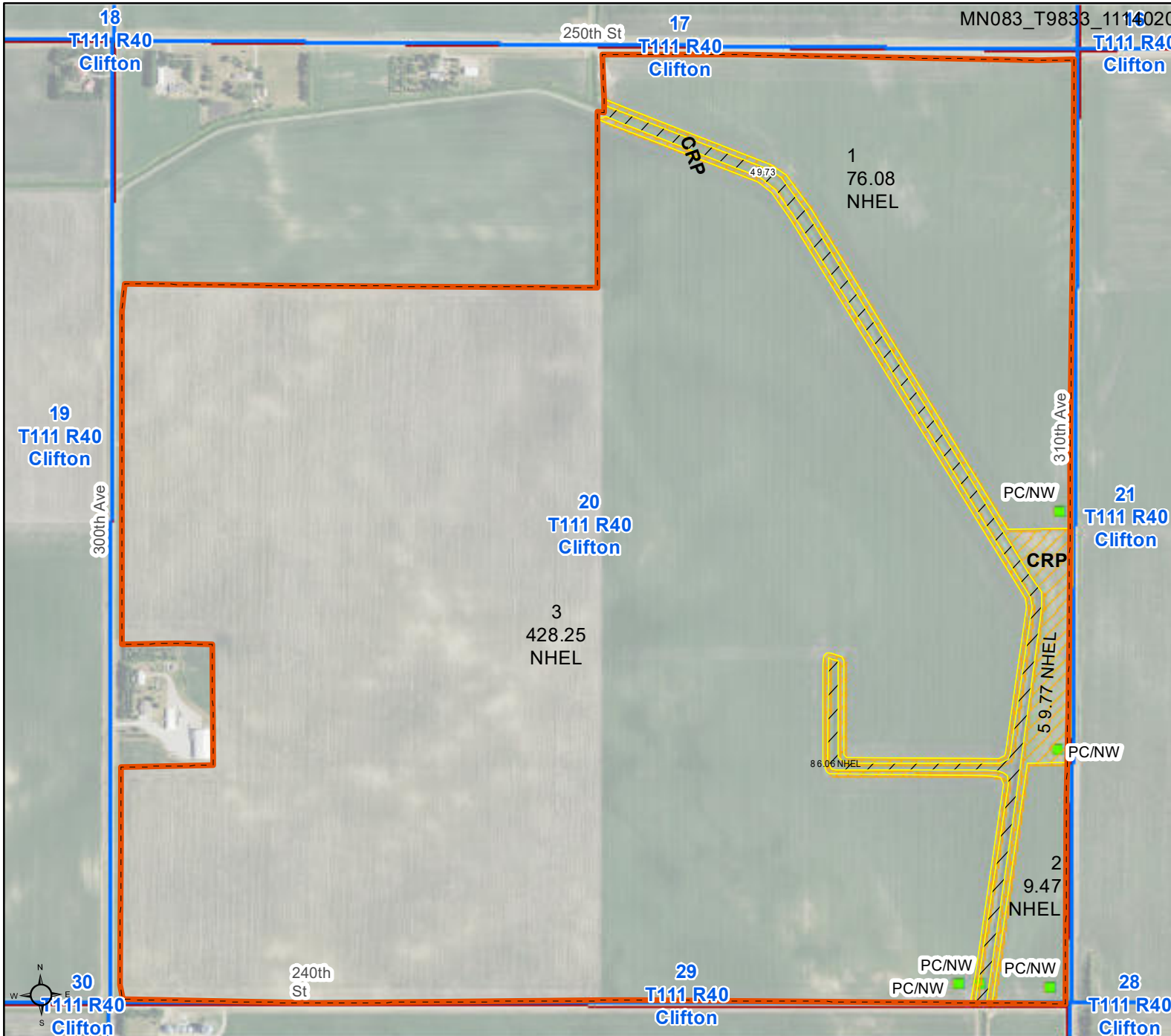
**Common Land Unit**

- Non-Cropland
- Cropland
- CRP
- Tract Boundary

**Wetland Determination Identifiers**

- Restricted Use
- Limited Restrictions
- Exempt from Conservation Compliance Provisions

Tract Cropland Total: 529.63 acres



United States Department of Agriculture (USDA) Farm Service Agency (FSA) maps are for FSA Program administration only. This map does not represent a legal survey or reflect actual ownership; rather it depicts the information provided directly from the producer and/or National Agricultural Imagery Program (NAIP) imagery. The producer accepts the data 'as is' and assumes all risks associated with its use. USDA-FSA assumes no responsibility for actual or consequential damage incurred as a result of any user's reliance on this data outside FSA Programs. Wetland identifiers do not represent the size, shape, or specific determination of the area. Refer to your original determination (CPA-026 and attached maps) for exact boundaries and determinations or contact USDA Natural Resources Conservation Service (NRCS). This map displays the 2021 NAIP imagery.



Customer: MEEHL Agro LLC

Tract: 9833

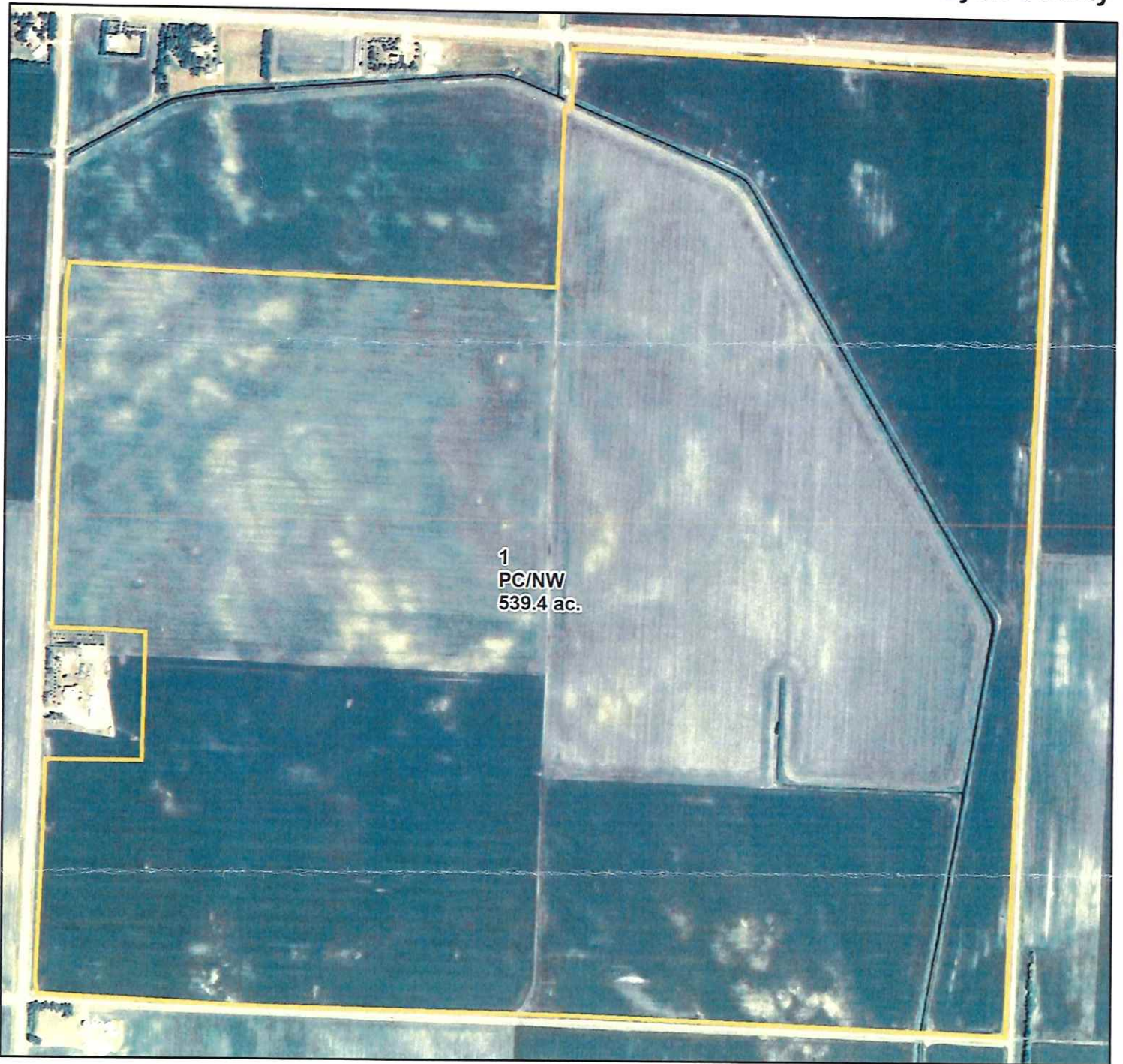
Township & Sec: Clifton 20

5/9/2016

# Certified Wetland Determination

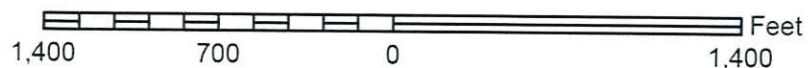


Lyon County



- |  |               |  |        |
|--|---------------|--|--------|
|  | Not Evaluated |  | CWTE   |
|  | PC/NW         |  | MIW    |
|  | W             |  | MW     |
|  | FW            |  | MWM    |
|  | FWP           |  | NW     |
|  | AW            |  | NW/NAD |
|  | CME           |  | PC     |
|  | CPD           |  | TP     |
|  | CW            |  | WX     |

1:9,240 1 inch = 770 feet



*This certified wetland determination/delineation has been conducted for the purpose of implementing the wetland conservation provisions of the Food Security Act of 1985. This determination/delineation may not be valid for identifying the extent of the Corps of Engineers (COE's) Clean Water Act jurisdiction for this site. Other federal, state or local permits or restrictions may apply to activities impacting wetlands. Contact the US Fish and Wildlife Service for information concerning conservation easements. Contact the Local Governmental Unit (LGU) for State Wetland Conservation Act permits and Minnesota Department of Natural Resources for protected water permits prior to initiating wetland activities by completing the "Minnesota Joint Project Notification Form" available from the LGU.*





Customer: Meehl Agro LLC  
Tract: 969  
Township & Section: Lake Marshall 24  
Legal: T111 R41 Sec 24



# Certified Wetland Determination

10/10/2017

Imagery Date: 2015



## Lyon County

1:5,280 1 inch = 440 feet



*This certified wetland determination/delineation has been conducted for the purpose of implementing the wetland conservation provisions of the Food Security Act of 1985. This determination/delineation may not be valid for identifying the extent of the Corps of Engineers' (COE's) Clean Water Act jurisdiction for this site. Other federal, state or local permits or restrictions may apply to activities impacting wetlands. Contact the US Fish and Wildlife Service for information concerning conservation easements. Contact the Local Governmental Unit (LGU) for State Wetland Conservation Act permits and Minnesota Department of Natural Resources for protected water permits prior to initiating wetland activities by completing the "Minnesota Joint Project Notification Form" available from the LGU.*

