



HIGHLY ERODIBLE LAND AND WETLAND CONSERVATION DETERMINATION

Name	Alan Nuese	Request Date:	3/15/2012	County:	Lincoln
Address	2948 Co Rd 102 Hendricks MN 56136				
Agency or Person Requesting Determination:	Landowner	Tract No:	369	Farm No:	4888

Section I - Highly Erodible Land

Is a soil survey now available for making a highly erodible land determination?	
Are there highly erodible soil map units on this farm?	

Fields in this section have undergone a determination of whether they are highly erodible land (HEL) or not; fields for which an HEL Determination has not been completed are not listed. In order to be eligible for USDA benefits, a person must be using an approved conservation system on all HEL.

<u>Field(s)</u>	<u>HEL(Y/N)</u>	<u>Sodbust (Y/N)</u>	<u>Acres</u>	<u>Determination Date</u>
Refer to the Previous HEL determination available on file from your FSA office				

Section II - Wetlands

Are there hydric soils on this farm?	Yes
--------------------------------------	-----

Fields in this section have had wetland determinations completed. See the Definition of Wetland Label Codes for additional information regarding allowable activities under the wetland conservation provisions of the Food Security Act and/or when wetland determinations are necessary to determine USDA program eligibility.

<u>Field(s)</u>	<u>Wetland Label</u>	<u>Occurrence Year</u>	<u>Acres</u>	<u>Determination Date</u>	<u>Certification Date</u>
1	PC/NW		151.2	3/15/2012	4/14/2012
1 a	FW		0.4	3/15/2012	4/14/2012
1 b	FW		0.4	3/15/2012	4/14/2012
1 c	FW		0.3	3/15/2012	4/14/2012
1 d	FW		0.5	3/15/2012	4/14/2012
1 e	W		0.6	3/15/2012	4/14/2012
1 f	FW		1.6	3/15/2012	4/14/2012
1 g	W		0.3	3/15/2012	4/14/2012

The wetland determination was completed in the Field It was delivered by: Mail On: 3/15/2012

Remarks:	
----------	--

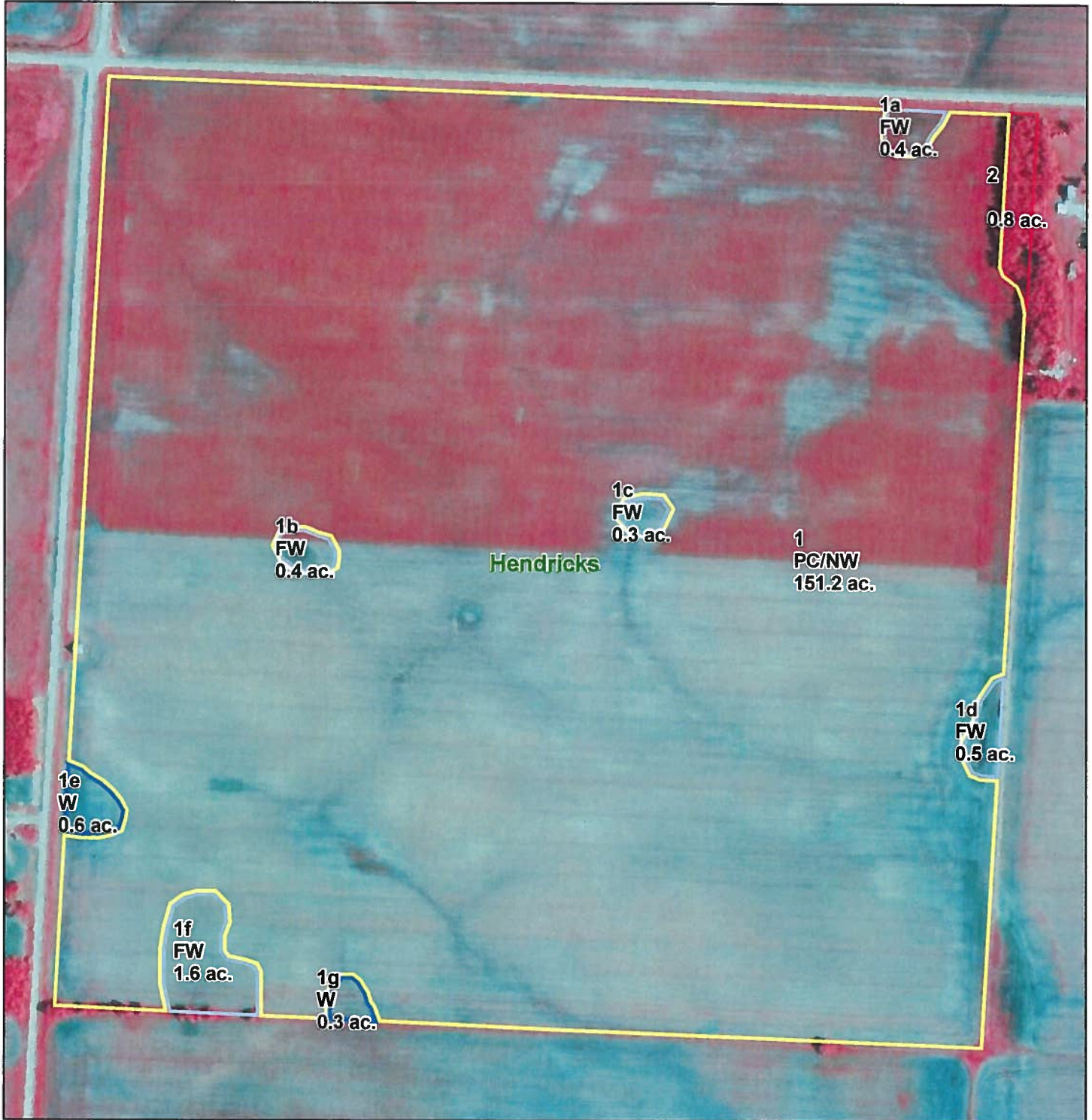
I certify that the above determinations are correct and were conducted in accordance with policies and procedures contained in the National Food Security Act Manual.

Signature Designated Conservationist	Date
Dennis Johnson	3/15/2012

Customer: Alan Nuese
 Tract: 369
 Date: 03/15/2012

Certified Wetland Determination

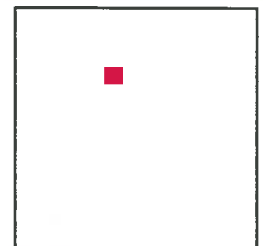
Agency: NRCS
 Field Office: Ivanhoe
 District: Lincoln SWCD



Missing Label	CME	MWM
PC/NW	CPD	NW
W	CW	NW/NAD
FW	CWTE	PC
FWP	MIW	TP
AW	MW	WX
	Townships	



1:4,621



Maps are for graphical purposes only. They do not represent a legal survey. While every effort has been made to ensure that these data are accurate and reliable within the limits of the current state of the art, NRCS cannot assume liability for any damages caused by any errors or omissions in the data, nor as a result of the failure of the data to function on a particular system. NRCS makes no warranty, expressed or implied, nor does the fact of distribution constitute such a warranty.