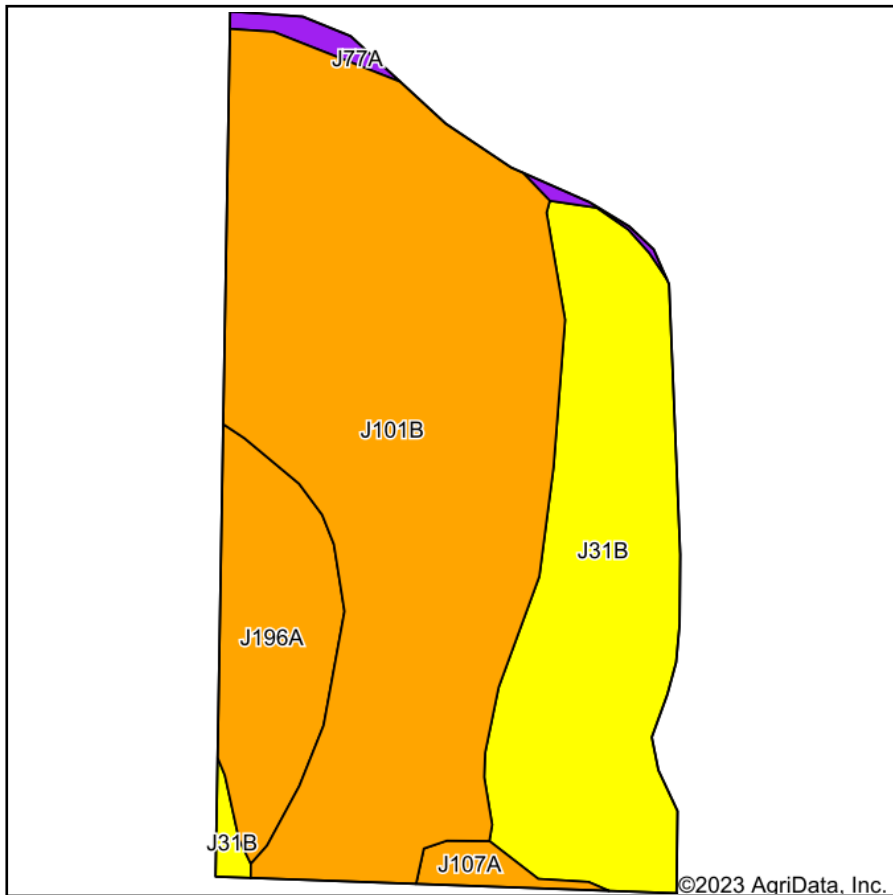
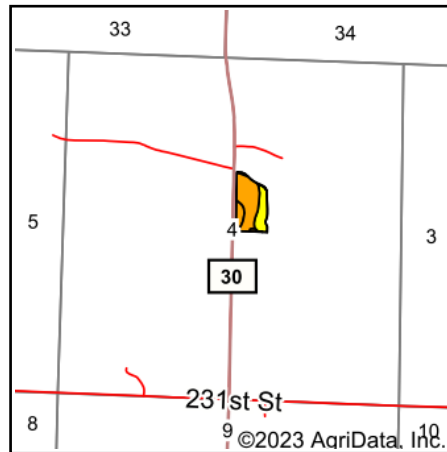


Soils Map



Soils data provided by USDA and NRCS.



State: **Minnesota**
 County: **Murray**
 Location: **4-108N-41W**
 Township: **Lake Sarah**
 Acres: **8.9**
 Date: **5/17/2023**



Area Symbol: MN101, Soil Area Version: 22

Code	Soil Description	Acres	Percent of field	Non-Irr Class Legend	Non-Irr Class *c	Productivity Index
J101B	Hokans-Svea complex, 1 to 4 percent slopes	5.21	58.5%		Ile	98
J31B	Arvilla-Sandberg complex, 2 to 6 percent slopes	2.48	27.9%		IVs	39
J196A	Forada loam, 0 to 2 percent slopes	0.98	11.0%		IIw	65
J107A	Lakepark-Roliss-Parnell, depressional, complex, 0 to 3 percent slopes	0.12	1.3%		IIw	93
J77A	Lamoure silty clay loam, 0 to 2 percent slopes, frequently flooded	0.11	1.2%		Vw	20
Weighted Average					2.59	76.9

*c: Using Capabilities Class Dominant Condition Aggregation Method
 Soils data provided by USDA and NRCS.