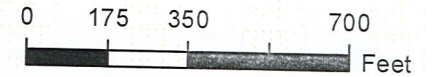


Farm 9367  
Tract 11402

2021 Program Year

Map Created March 29, 2021



- Unless otherwise noted:  
 Shares are 100% operator  
 Crops are non-irrigated  
 Corn = yellow for grain  
 Soybeans = common soybeans for grain  
 Wheat = HRS, HRW = Grain  
 Sunflower = Oil, Non-Oil = Grain  
 Oats and Barley = Spring for grain  
 Rye = for grain  
 Peas = process  
 Alfalfa, Mixed Forage AGM, GMA, IGS = for forage  
 Beans = Dry Edible  
 NAG = for GZ  
 Canola = Spring for seed

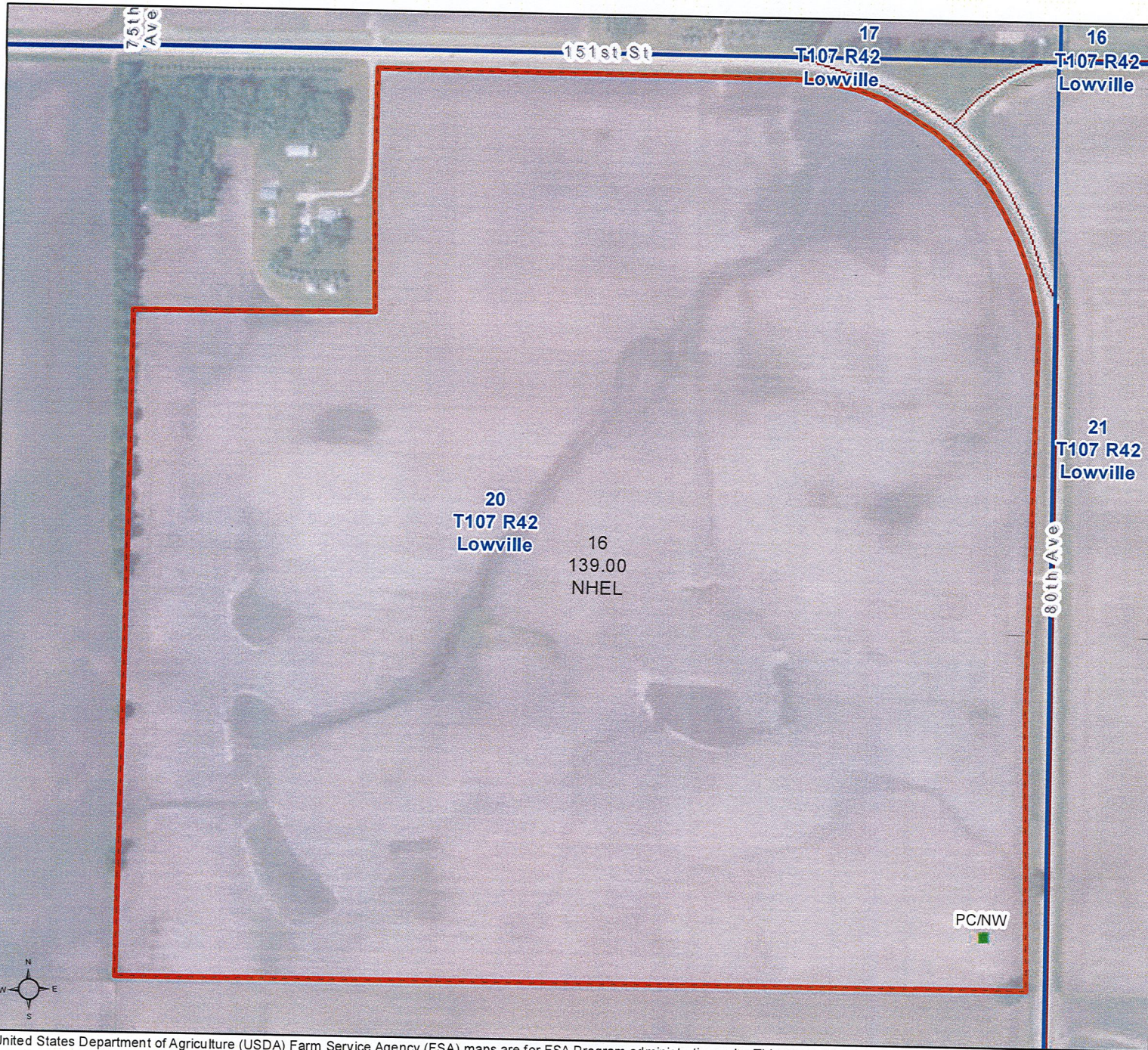
Common Land Unit

- Cropland
- Tract Boundary
- Minnesota\_Transparency\_Polygon\_02142019

Wetland Determination Identifiers

- Restricted Use
- ▼ Limited Restrictions
- Exempt from Conservation Compliance Provisions

Tract Cropland Total: 139.00 acres



United States Department of Agriculture (USDA) Farm Service Agency (FSA) maps are for FSA Program administration only. This map does not represent a legal survey or reflect actual ownership; rather it depicts the information provided directly from the producer and/or National Agricultural Imagery Program (NAIP) imagery. The producer accepts the data 'as is' and assumes all risks associated with its use. USDA-FSA assumes no responsibility for actual or consequential damage incurred as a result of any user's reliance on this data outside FSA Programs. Wetland identifiers do not represent the size, shape, or specific determination of the area. Refer to your original determination (CPA-026 and attached maps) for exact boundaries and determinations or contact USDA Natural Resources Conservation Service (NRCS). This map displays the 2019 NAIP imagery.

Minnesota  
Murray  
Report ID: FSA-156EZ

U.S. Department of Agriculture  
Farm Service Agency  
**Abbreviated 156 Farm Record**

**FARM: 9367**  
Prepared:  
Crop Year:  
Page:

DISCLAIMER: This is data extracted from the web farm database. Because of potential messaging failures in MIDAS, this data is not guaranteed to be an accurate and complete representation of data contained in the MIDAS system, which is the system of record for Farm Records.

Tract Number:                      Description  
FSA Physical Location : Murray, MN                      ANSI Physical Location: Murray, MN  
BIA Range Unit Number:  
HEL Status: NHEL: no agricultural commodity planted on undetermined fields  
Wetland Status: Tract does not contain a wetland  
WL Violations: None

Farmland	Cropland	DCP Cropland	WBP	WRP	EWP	CRP Cropland	GRP
State Conservation	Other Conservation	Effective DCP Cropland	Double Cropped	MPL/FWP	Native Sod		
Crop	Base Acreage	PLC Yield	CCC-505 CRP Reduction				
OATS							
CORN							
SOYBEANS							
<b>Total Base Acres:</b>							

Owners:  
Other Producers: None

Tract Number: 11402                      Description LOWVILLE-20 NE4  
FSA Physical Location : Murray, MN                      ANSI Physical Location: Murray, MN  
BIA Range Unit Number:  
HEL Status: NHEL: no agricultural commodity planted on undetermined fields  
Wetland Status: Tract does not contain a wetland  
WL Violations: None

Farmland	Cropland	DCP Cropland	WBP	WRP	EWP	CRP Cropland	GRP
State Conservation	Other Conservation	Effective DCP Cropland	Double Cropped	MPL/FWP	Native Sod		
Crop	Base Acreage	PLC Yield	CCC-505 CRP Reduction				
OATS	2.98	94	0.00				
CORN	65.59	168	0.00				
SOYBEANS	61.18	44	0.00				

Minnesota  
Murray

U.S. Department of Agriculture  
Farm Service Agency  
**Abbreviated 156 Farm Record**

**FARM: 9367**  
Prepared:  
Crop Year:  
Page:

Report ID: FSA-156EZ

DISCLAIMER: This is data extracted from the web farm database. Because of potential messaging failures in MIDAS, this data is not guaranteed to be an accurate and complete representation of data contained in the MIDAS system, which is the system of record for Farm Records.

<b>Crop</b>	<b>Base Acreage</b>	<b>PLC Yield</b>	<b>CCC-505 CRP Reduction</b>
Total Base Acres:	129.75		

Owners:

Other Producers:

Tract Number: Description

FSA Physical Location : Murray, MN

ANSI Physical Location:

BIA Range Unit Number:

HEL Status: NHEL: no agricultural commodity planted on undetermined fields

Recon Number

Wetland Status: Tract does not contain a wetland

WL Violations: None

Farmland	Cropland	DCP Cropland	WBP	WRP	EWP	CRP Cropland	GRP
State Conservation	Other Conservation	Effective DCP Cropland	Double Cropped	MPL/FWP		Native Sod	

<b>Crop</b>	<b>Base Acreage</b>	<b>PLC Yield</b>	<b>CCC-505 CRP Reduction</b>
OATS			
CORN			
SOYBEANS			
Total Base Acres:			

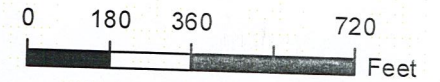
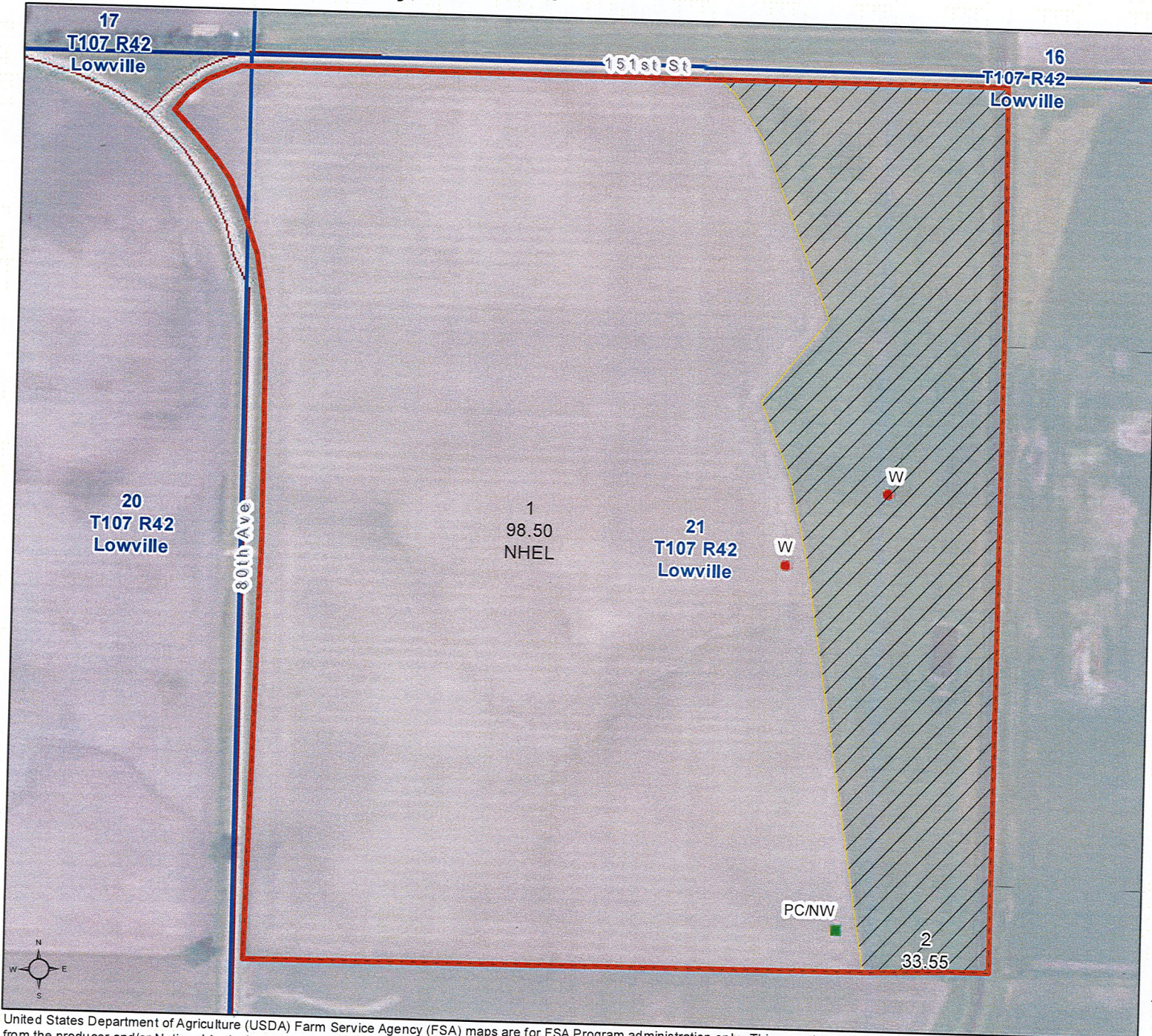
Owner:

Other Producers:

Farm 9367  
Tract 830

2021 Program Year

Map Created March 29, 2021



- Unless otherwise noted:  
 Shares are 100% operator  
 Crops are non-irrigated  
 Corn = yellow for grain  
 Soybeans = common soybeans for grain  
 Wheat = HRS, HRW = Grain  
 Sunflower = Oil, Non-Oil = Grain  
 Oats and Barley = Spring for grain  
 Rye = for grain  
 Peas = process  
 Alfalfa, Mixed Forage AGM, GMA, IGS = for forage  
 Beans = Dry Edible  
 NAG = for GZ  
 Canola = Spring for seed

- Common Land Unit**
- Non-Cropland
  - Cropland
  - Tract Boundary
- Minnesota\_Transparency\_Polygon\_02142019

- Wetland Determination Identifiers**
- Restricted Use
  - Limited Restrictions
  - Exempt from Conservation Compliance Provisions

Tract Cropland Total: 98.50 acres

United States Department of Agriculture (USDA) Farm Service Agency (FSA) maps are for FSA Program administration only. This map does not represent a legal survey or reflect actual ownership; rather it depicts the information provided directly from the producer and/or National Agricultural Imagery Program (NAIP) imagery. The producer accepts the data 'as is' and assumes all risks associated with its use. USDA-FSA assumes no responsibility for actual or consequential damage incurred as a result of any user's reliance on this data outside FSA Programs. Wetland identifiers do not represent the size, shape, or specific determination of the area. Refer to your original determination (CPA-026 and attached maps) for exact boundaries and determinations or contact USDA Natural Resources Conservation Service (NRCS). This map displays the 2019 NAIP imagery.

Minnesota  
Murray

U.S. Department of Agriculture  
Farm Service Agency  
**Abbreviated 156 Farm Record**

**FARM: 9367**  
Prepared:  
Crop Year:  
Page:

Report ID: FSA-156EZ

DISCLAIMER: This is data extracted from the web farm database. Because of potential messaging failures in MIDAS, this data is not guaranteed to be an accurate and complete representation of data contained in the MIDAS system, which is the system of record for Farm Records.

Operator Name \_\_\_\_\_ Farm Identifier \_\_\_\_\_ Recon Number \_\_\_\_\_

Farms Associated with Operator:

ARC/PLC G//F Eligibility: Eligible

CRP Contract Number(s): None

Farmland	Cropland	DCP Cropland	WBP	WRP	EWP	CRP Cropland	GRP	Farm Status	Number of Tracts
State Conservation	Other Conservation	Effective DCP Cropland	Double Cropped	MPL/FWP	Native Sod				

PLC	ARC-CO	ARC-IC	ARC/PLC		
			PLC-Default	ARC-CO-Default	ARC-IC-Default

Crop	Base Acreage	PLC Yield	CCC-505 CRP Reduction
OATS			
CORN			
SOYBEANS			

Total Base Acres:

Tract Number: 830 Description LOWVILLE-21 NW4  
FSA Physical Location : Murray, MN ANSI Physical Location: Murray, MN

BIA Range Unit Number:

HEL Status: NHEL: no agricultural commodity planted on undetermined fields

Wetland Status: Tract contains a wetland or farmed wetland

WL Violations: None

Farmland	Cropland	DCP Cropland	WBP	WRP	EWP	CRP Cropland	GRP
132.05	98.5	98.5	0.0	0.0	0.0	0.0	0.0
State Conservation	Other Conservation	Effective DCP Cropland	Double Cropped	MPL/FWP	Native Sod		
0.0	0.0	98.5	0.0	0.0	0.0		

Crop	Base Acreage	PLC Yield	CCC-505 CRP Reduction
OATS	2.11	94	0.00
CORN	46.49	168	0.00

FARM: 9367

Minnesota  
Murray

U.S. Department of Agriculture  
Farm Service Agency  
Abbreviated 156 Farm Record

Prepared:  
Crop Year:  
Page:

Report ID: FSA-156EZ

DISCLAIMER: This is data extracted from the web farm database. Because of potential messaging failures in MIDAS, this data is not guaranteed to be an accurate and complete representation of data contained in the MIDAS system, which is the system of record for Farm Records.

Crop	Base Acreage	PLC Yield	CCC-505 CRP Reduction
SOYBEANS	43.36	44	0.00
<b>Total Base Acres:</b>	91.96		

Owners:

Other Producers:

Tract Number                      Description

FSA Physical Location :    ANSI Physical Location:

BIA Range Unit Number:

HEL Status:    NHEL: no agricultural commodity planted on undetermined fields

Wetland Status:    Tract does not contain a wetland

WL Violations:    None

Farmland	Cropland	DCP Cropland	WBP	WRP	EWP	CRP Cropland	GRP
State Conservation	Other Conservation	Effective DCP Cropland	Double Cropped	MPL/FWP	Native Sod		

Crop	Base Acreage	PLC Yield	CCC-505 CRP Reduction
OATS			
CORN			
SOYBEANS			
<b>Total Base Acres:</b>			

Owner:

Other Producers: