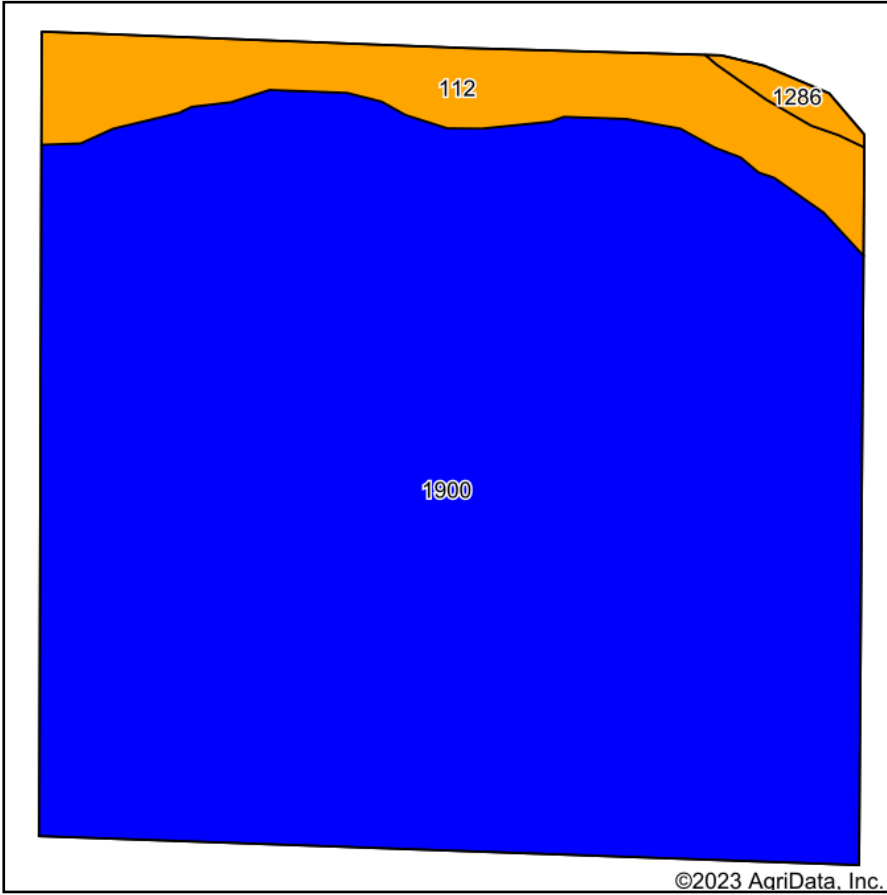
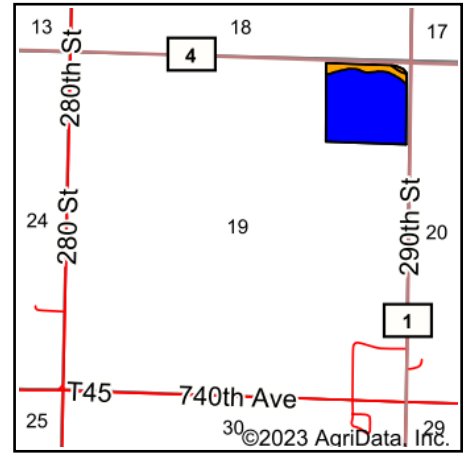


Soils Map



Soils data provided by USDA and NRCS.



State: **Minnesota**
 County: **Renville**
 Location: **19-114N-35W**
 Township: **Henryville**
 Acres: **35.3**
 Date: **1/9/2023**



Maps Provided By:



© AgriData, Inc. 2021

www.AgriDataInc.com



Area Symbol: MN129, Soil Area Version: 19

Code	Soil Description	Acres	Percent of field	Non-Irr Class Legend	Non-Irr Class *c	Productivity Index
1900	Okoboji-Canisteo depressional complex, 0 to 1 percent slopes	31.78	90.0%		IIIw	86
112	Harps clay loam, 0 to 2 percent slopes	3.29	9.3%		IIw	90
1286	Prinsburg silty clay loam, 0 to 2 percent slopes	0.23	0.7%		IIw	91
Weighted Average					2.90	86.4

*c: Using Capabilities Class Dominant Condition Aggregation Method
 Soils data provided by USDA and NRCS.