

Minnesota

U.S. Department of Agriculture

FARM: 0724

Murray

Farm Service Agency

Prepared: 12/23/22 8:18 AM

Report ID: FSA-156EZ

Abbreviated 156 Farm Record

Crop Year: 2022

Page: 3 of 3

DISCLAIMER: This is data extracted from the web farm database. Because of potential messaging failures in MIDAS, this data is not guaranteed to be an accurate and complete representation of data contained in the MIDAS system, which is the system of record for Farm Records.

Other Producers:

Tract Number: 11992 Description LYON CO. ROCK LAKE-36 E2SW4

FSA Physical Location : Lyon, MN

ANSI Physical Location: Lyon, MN

BIA Range Unit Number:

HEL Status: NHEL: no agricultural commodity planted on undetermined fields

Wetland Status: Tract does not contain a wetland

WL Violations: None

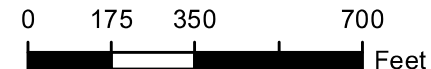
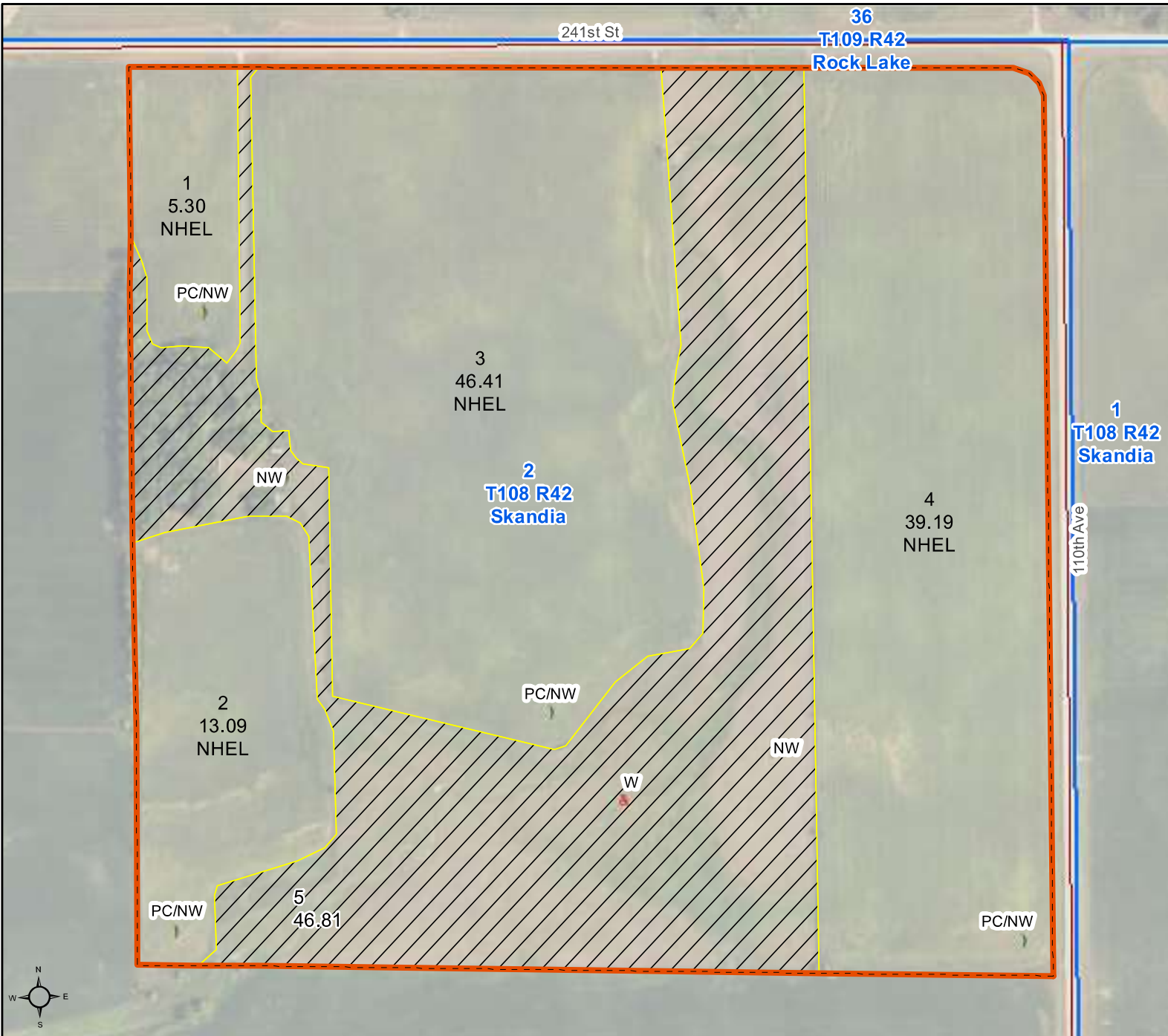
Farmland	Cropland	DCP Cropland	WBP	WRP	EWP	CRP Cropland	GRP
78.46	73.27	73.27	0.0	0.0	0.0	0.0	0.0
State Conservation	Other Conservation	Effective DCP Cropland	Double Cropped	MPL/FWP	Native Sod		
0.0	0.0	73.27	0.0	0.0	0.0		

Crop	Base Acreage	PLC Yield	CCC-505 CRP Reduction
CORN	47.64	135	0.00
SOYBEANS	25.63	42	0.00
<b>Total Base Acres:</b>	<b>73.27</b>		

Owners: WEGNER, MICHAEL  
WEGNER, ELENA

LOECK HOMESTEAD LLC

Other Producers: None



- Unless otherwise noted:  
 Shares are 100% operator  
 Crops are non-irrigated  
 Corn = yellow for grain  
 Soybeans = common soybeans for grain  
 Wheat = HRS, HRW = Grain  
 Sunflower = Oil, Non-Oil = Grain  
 Oats and Barley = Spring for grain  
 Rye = for grain  
 Peas = process  
 Alfalfa, Mixed Forage AGM, GMA, IGS = for forage  
 Beans = Dry Edible  
 NAG = for GZ  
 Canola = Spring for seed

**Common Land Unit**

- Non-Cropland
- Cropland
- Tract Boundary

**Wetland Determination Identifiers**

- Restricted Use
- Limited Restrictions
- Exempt from Conservation Compliance Provisions

Tract Cropland Total: 103.99 acres

