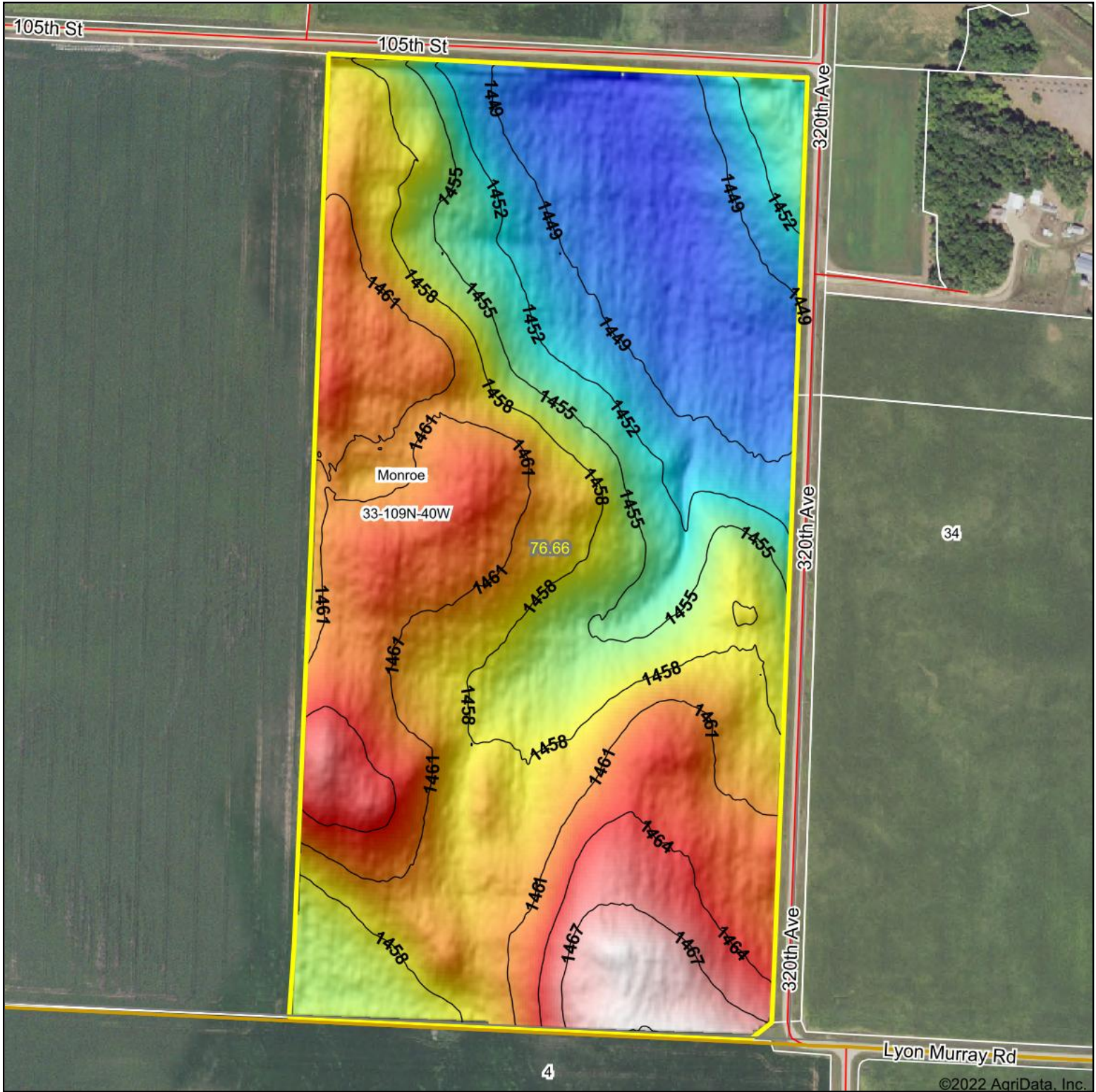


# Topography Hillshade



<p>Low Elevation High</p>	<p>Source: USGS 3 meter dem              Interval(ft): 3              Min: 1,446.0              Max: 1,470.0              Range: 24.0              Average: 1,457.4              Standard Deviation: 5.87 ft</p>	<p>0ft 418ft 837ft</p> <p>                   7/1/2022  <b>33-109N-40W</b>  <b>Lyon County</b>  <b>Minnesota</b>                  map center:44.198779, -95.656390             </p>
---------------------------	--	--



© AgriData, Inc. 2021 www.AgriDataInc.com  
 Field borders provided by Farm Service Agency as of 5/21/2008.