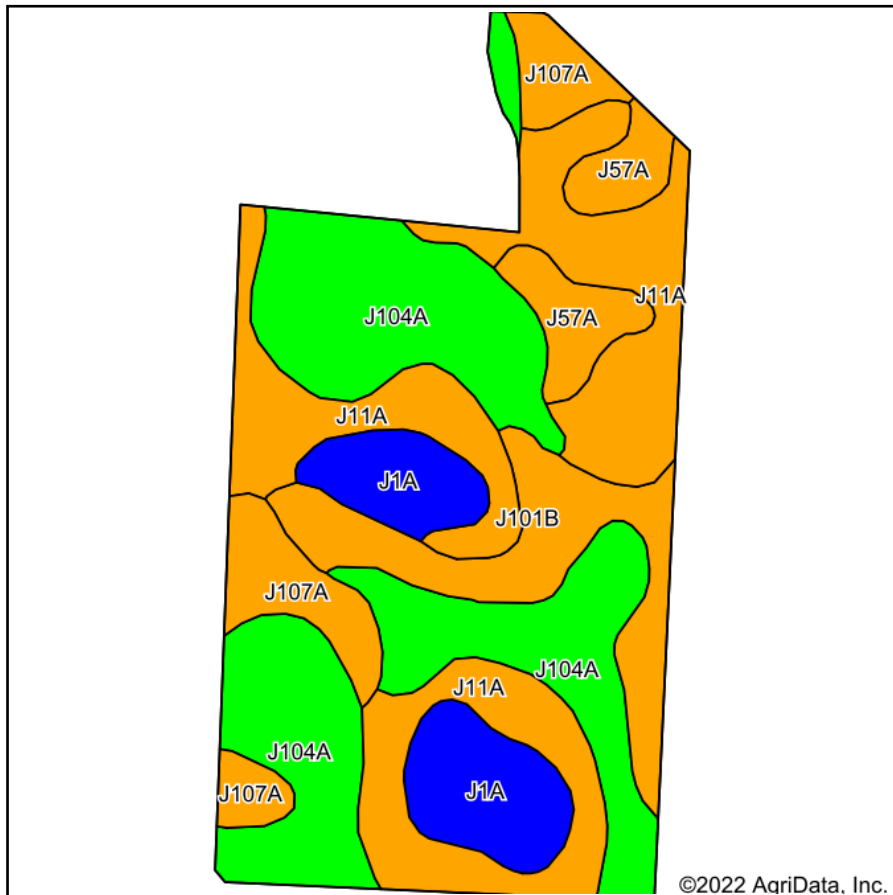
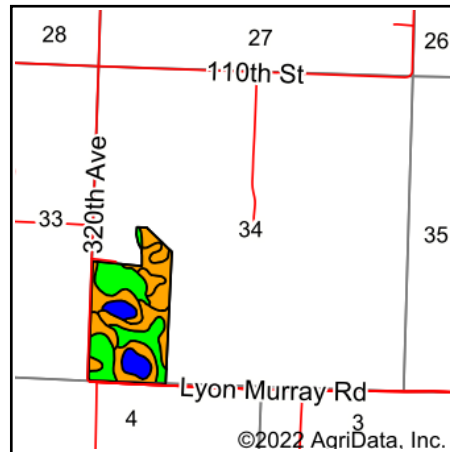


Soils Map



Soils data provided by USDA and NRCS.



State: **Minnesota**
 County: **Lyon**
 Location: **34-109N-40W**
 Township: **Monroe**
 Acres: **66**
 Date: **7/1/2022**



Area Symbol: MN083, Soil Area Version: 18

Code	Soil Description	Acres	Percent of field	Non-Irr Class Legend	Non-Irr Class *c	Productivity Index
J104A	Svea loam, 1 to 3 percent slopes	23.49	35.6%		Ie	99
J11A	Vallers clay loam, 0 to 2 percent slopes	19.22	29.1%		IIw	90
J101B	Hokans-Svea complex, 1 to 4 percent slopes	7.26	11.0%		Ile	98
J1A	Parnell silty clay loam, depressional, 0 to 1 percent slopes	6.87	10.4%		IIIw	86
J107A	Lakepark-Roliss-Parnell, depressional, complex, 0 to 3 percent slopes	5.46	8.3%		IIw	93
J57A	Balaton loam, 1 to 3 percent slopes	3.70	5.6%		IIs	96
Weighted Average					1.75	94.3

*c: Using Capabilities Class Dominant Condition Aggregation Method
 Soils data provided by USDA and NRCS.