

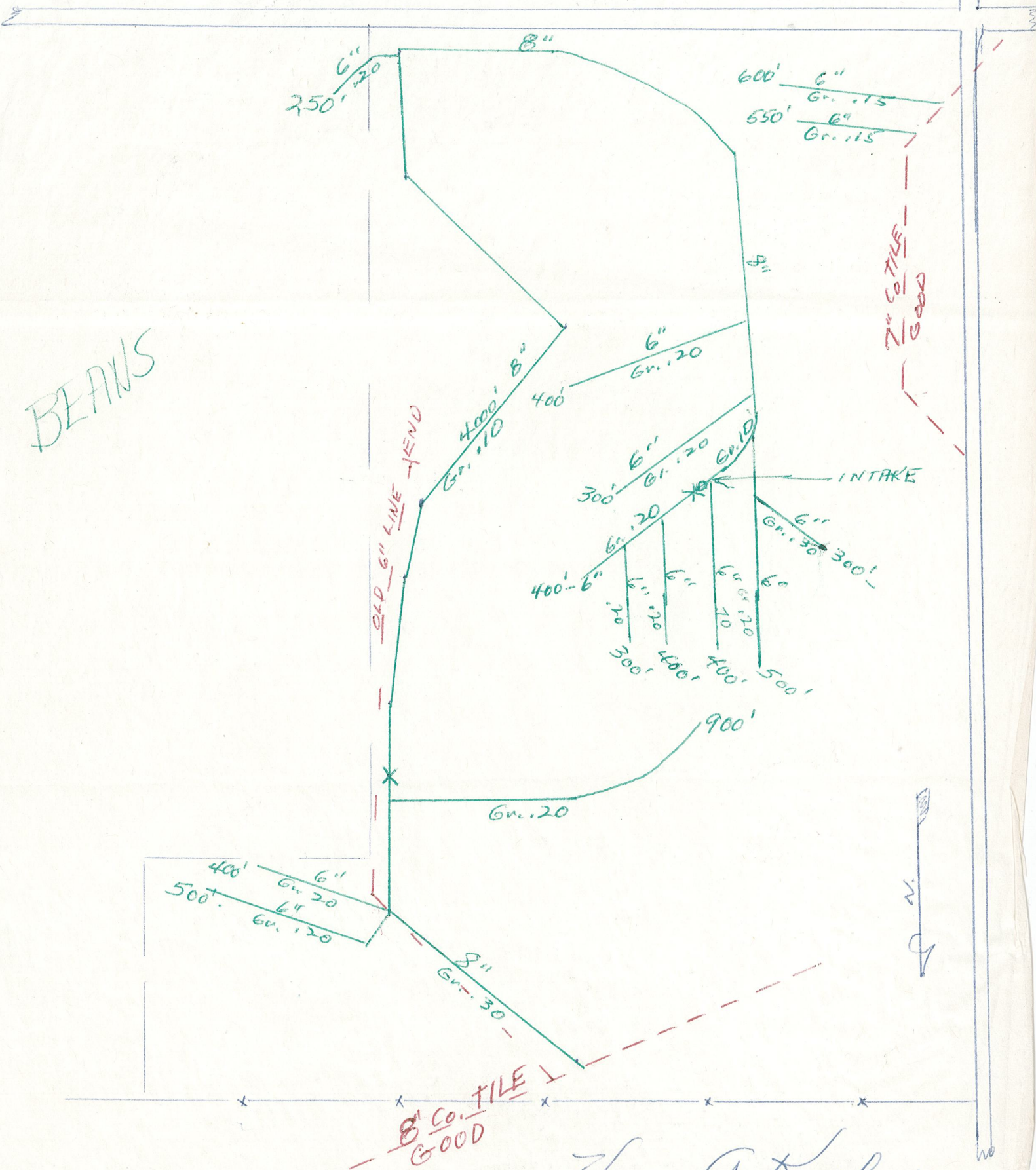
MARY BROOKS TRUST

JOE MILONE, AGENT OCT. 1962

SW 1/4 Sec 21 BLOOM

→ 104-41 - Nobles Co.

BEANS



MARY BROOKS TRUST

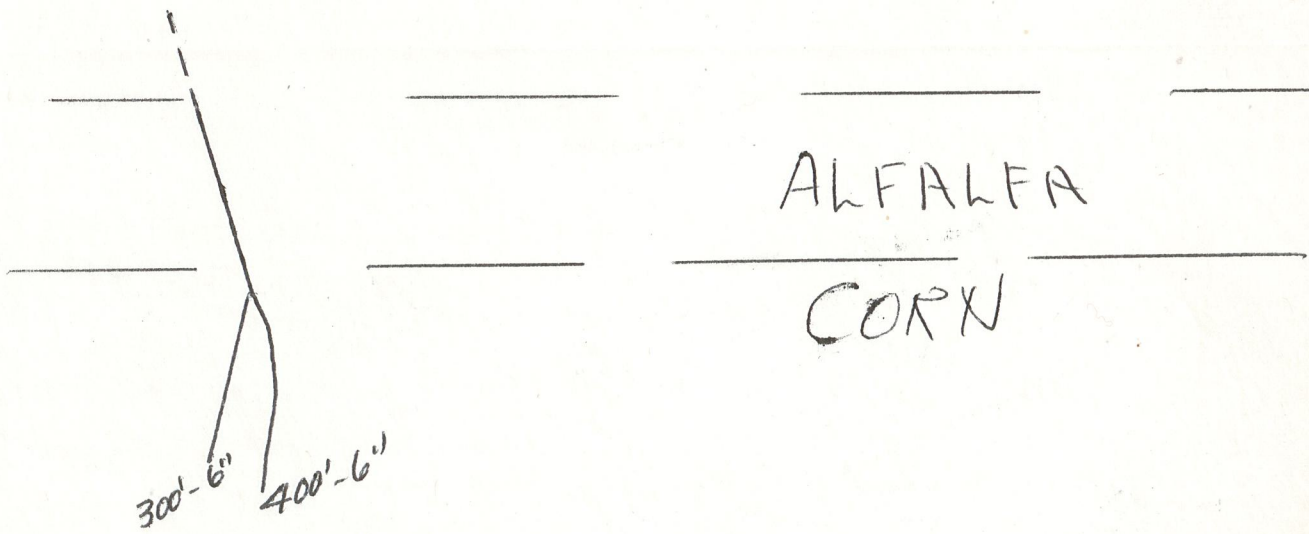
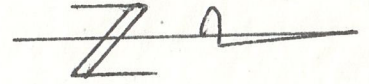
JOE MALONE

9-25-65

SW 1/4 Sec. 21 BLOOM

NOBLES Co.

-104-41



tenant Schettler

Verne A. Krohn