



Abbreviated 156 Farm Record

Operator Name :   
 Farms Associated with Operator :   
 CRP Contract Number(s) : None   
 Recon ID : None   
 Transferred From : None   
 ARCPLC G//F Eligibility : Eligible

Farm Land Data									
Farmland	Cropland	DCP Cropland	WBP	WRP	CRP	GRP	Sugarcane	Farm Status	Number Of Tracts
159.72	159.53	159.53	0.00	0.00	0.00	0.00	0.00	Active	1
State Conservation	Other Conservation	Effective DCP Cropland	Double Cropped		MPL	Acre Election	EWP	DCP Ag.Rel. Activity	Broken From Native Sod
0.00	0.00	159.53	0.00		0.00		0.00	0.00	0.00

Crop Election Choice		
ARC Individual	ARC County	Price Loss Coverage
None	CORN, SOYBN	None

DCP Crop Data				
Crop Name	Base Acres	CCC-505 CRP Reduction Acres	PLC Yield	HIP
Corn	116.62	0.00	175	
Soybeans	38.88	0.00	43	
<b>TOTAL</b>	<b>155.50</b>	<b>0.00</b>		

**NOTES**

**Tract Number** : 362

**Description** : SW4 S21/BL

**FSA Physical Location** : MINNESOTA/NOBLES

**ANSI Physical Location** : MINNESOTA/NOBLES

**BIA Unit Range Number** :

**HEL Status** : NHEL: No agricultural commodity planted on undetermined fields

**Wetland Status** : Tract does not contain a wetland

**WL Violations** : None

**Owners** : DAVID B JONES FOUNDATION

**Other Producers** : None

**Recon ID** : None

Tract Land Data							
Farm Land	Cropland	DCP Cropland	WBP	WRP	CRP	GRP	Sugarcane
159.72	159.53	159.53	0.00	0.00	0.00	0.00	0.00
State Conservation	Other Conservation	Effective DCP Cropland	Double Cropped	MPL	EWP	DCP Ag. Rel Activity	Broken From Native Sod
0.00	0.00	159.53	0.00	0.00	0.00	0.00	0.00

DCP Crop Data			
Crop Name	Base Acres	CCC-505 CRP Reduction Acres	PLC Yield

Abbreviated 156 Farm Record

Tract 362 Continued ...

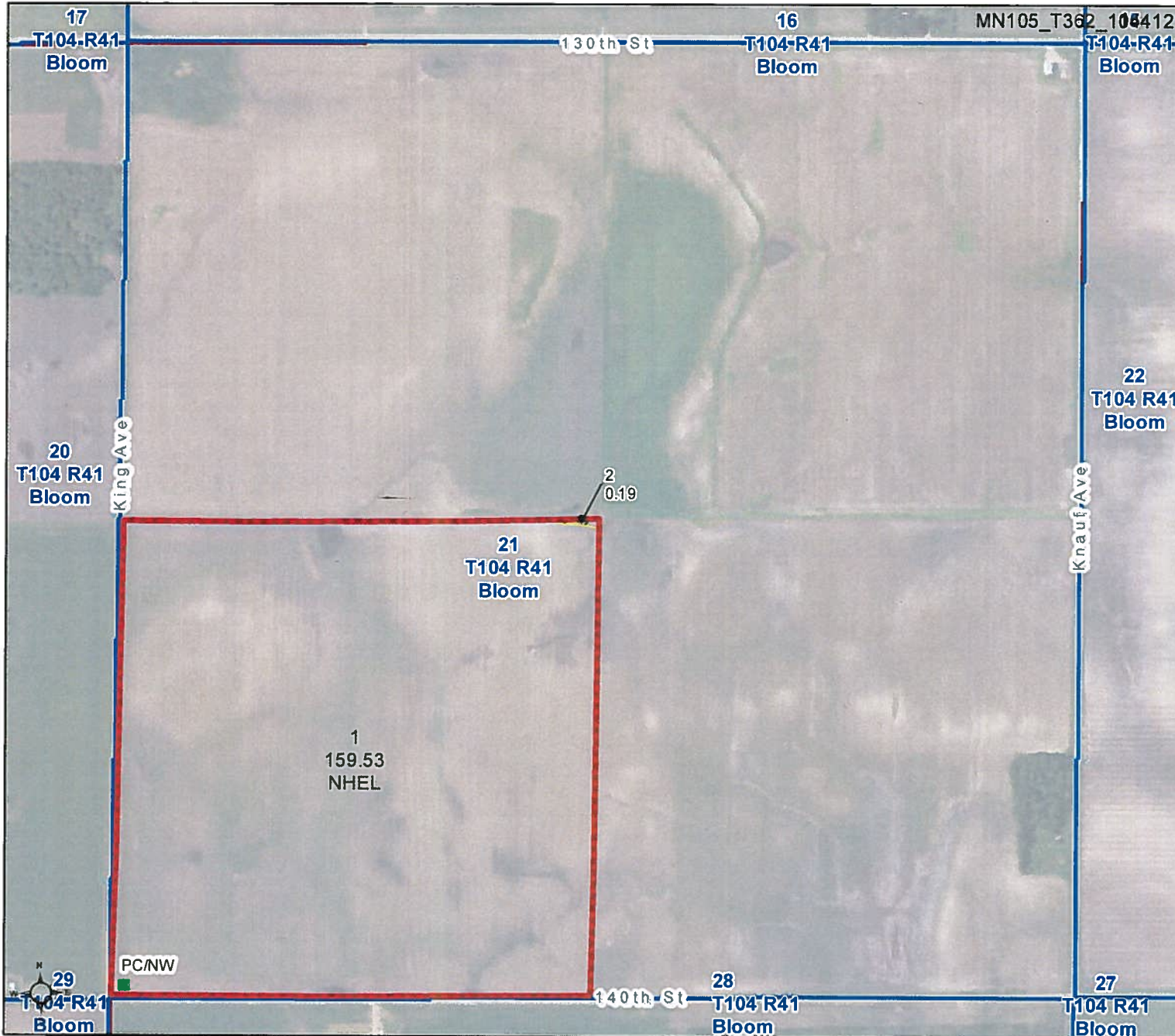
Corn	116.62	0.00	175
Soybeans	38.88	0.00	43
<b>TOTAL</b>	<b>155.50</b>	<b>0.00</b>	

NOTES

In accordance with Federal civil rights law and U.S. Department of Agriculture (USDA) civil rights regulations and policies, the USDA, its Agencies, offices, and employees, and institutions participating in or administering USDA programs are prohibited from discriminating based on race, color, national origin, religion, sex, gender identity (including gender expression), sexual orientation, disability, age, marital status, family/parental status, income derived from a public assistance program, political beliefs, or reprisal or retaliation for prior civil rights activity, in any program or activity conducted or funded by USDA (not all bases apply to all programs). Remedies and complaint filing deadlines vary by program or incident.

Persons with disabilities who require alternative means of communication for program information (e.g., Braille, large print, audiotape, American Sign Language, etc.) should contact the responsible Agency or USDA's TARGET Center at (202) 720-2600 (voice and TTY) or contact USDA through the Federal Relay Service at (800) 877-8339. Additionally, program information may be made available in languages other than English.

To file a program discrimination complaint, complete the USDA Program Discrimination Complaint Form, AD-3027, found online at [http://www.ascr.usda.gov/complaint\\_filing\\_cust.html](http://www.ascr.usda.gov/complaint_filing_cust.html) and at any USDA office or write a letter addressed to USDA and provide in the letter all of the information requested in the form. To request a copy of the complaint form, call (866) 632-9992. Submit your completed form or letter to USDA by: (1) mail: U.S. Department of Agriculture Office of the Assistant Secretary for Civil Rights 1400 Independence Avenue, SW Washington, D.C. 20250-9410; (2) fax: (202) 690-7442; or (3) e-mail: [program.intake@usda.gov](mailto:program.intake@usda.gov). USDA is an equal opportunity provider, employer, and lender.



Unless otherwise noted:  
 Shares are 100% operator  
 Crops are non-irrigated  
 Corn = yellow for grain  
 Soybeans = common soybeans for grain  
 Wheat = HRS, HRW = Grain  
 Sunflower = Oil, Non-Oil = Grain  
 Oats and Barley = Spring for grain  
 Rye = for grain  
 Peas = process  
 Alfalfa, Mixed Forage AGM, GMA, IGS = for forage  
 Beans = Dry Edible  
 NAG = for GZ  
 Canola = Spring for seed

**Common Land Unit**

**Wetland Determination Identifiers**

Tract Cropland Total: 159.53 acres

United States Department of Agriculture (USDA) Farm Service Agency (FSA) maps are for FSA Program administration only. This map does not represent a legal survey or reflect actual ownership; rather it depicts the information provided directly from the producer and/or National Agricultural Imagery Program (NAIP) imagery. The producer accepts the data 'as is' and assumes all risks associated with its use. USDA-FSA assumes no responsibility for actual or consequential damage incurred as a result of any user's reliance on this data outside FSA Programs. Wetland identifiers do not represent the size, shape, or specific determination of the area. Refer to your original determination (CPA-026 and attached maps) for exact boundaries and determinations or contact USDA Natural Resources Conservation Service (NRCS). This map displays the 2019 NAIP imagery.

Customer: [REDACTED]  
 Tract: 362 Farm 275  
 Date: 2/17/2012  
 Bloom Section 21-104-41

# Certified Wetland Determination

Agency: NRCS  
 Field Office: Nobles  
 District: Nobles SWCD

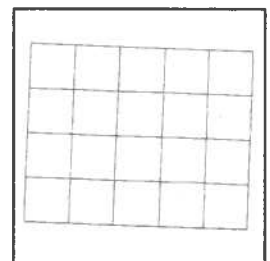


### Legend

- |               |      |        |
|---------------|------|--------|
| Missing Label | CME  | MWM    |
| PC/NW         | CPD  | NW     |
| W             | CW   | NW/NAD |
| FW            | CWTE | PC     |
| FWP           | MIW  | TP     |
| AW            | MW   | WX     |



1:5,500



Maps are for graphical purposes only. They do not represent a legal survey. While every effort has been made to ensure that these data are accurate and reliable within the limits of the current state of the art, NRCS cannot assume liability for any damages caused by any errors or omissions in the data, nor as a result of the failure of the data to function on a particular system. NRCS makes no warranty, expressed or implied, nor does the fact of distribution constitute such a warranty.