



## Abbreviated 156 Farm Record

Operator Name : [REDACTED]  
 Farms Associated with Operator : [REDACTED]  
 CRP Contract Number(s) : None  
 Recon ID : 27-105-2016-37  
 Transferred From : None  
 ARCPLC G//F Eligibility : Eligible

## Farm Land Data

Farmland	Cropland	DCP Cropland	WBP	WRP	CRP	GRP	Sugarcane	Farm Status	Number Of Tracts
155.89	153.75	153.75	0.00	0.00	0.00	0.00	0.00	Active	1
State Conservation	Other Conservation	Effective DCP Cropland	Double Cropped		MPL	Acre Election	EWP	DCP Ag.Rel. Activity	Broken From Native Sod
0.00	0.00	153.75	0.00		0.00		0.00	0.00	0.00

## Crop Election Choice

ARC Individual	ARC County	Price Loss Coverage
None	CORN, SOYBN	None

## DCP Crop Data

Crop Name	Base Acres	CCC-505 CRP Reduction Acres	PLC Yield	HIP
Corn	77.60	0.00	152	
Soybeans	76.15	0.00	41	
<b>TOTAL</b>	<b>153.75</b>	<b>0.00</b>		

## NOTES

--

Tract Number : 350

Description : NE4 S21/BL  
 FSA Physical Location : MINNESOTA/NOBLES  
 ANSI Physical Location : MINNESOTA/NOBLES  
 BIA Unit Range Number :  
 HEL Status : NHEL: No agricultural commodity planted on undetermined fields  
 Wetland Status : Tract does not contain a wetland  
 WL Violations : None  
 Owners : DAVID B JONES FOUNDATION  
 Other Producers : None  
 Recon ID : None

## Tract Land Data

Farm Land	Cropland	DCP Cropland	WBP	WRP	CRP	GRP	Sugarcane
155.89	153.75	153.75	0.00	0.00	0.00	0.00	0.00
State Conservation	Other Conservation	Effective DCP Cropland	Double Cropped	MPL	EWP	DCP Ag. Rel Activity	Broken From Native Sod
0.00	0.00	153.75	0.00	0.00	0.00	0.00	0.00

## DCP Crop Data

Crop Name	Base Acres	CCC-505 CRP Reduction Acres	PLC Yield

MINNESOTA

NOBLES

Form: FSA-156EZ



United States Department of Agriculture  
Farm Service Agency

FARM : 8722

Prepared : 3/16/22 3:49 PM

Crop Year : 2022

Abbreviated 156 Farm Record

Tract 350 Continued ...

Corn	77.60	0.00	152
Soybeans	76.15	0.00	41
<b>TOTAL</b>	<b>153.75</b>	<b>0.00</b>	

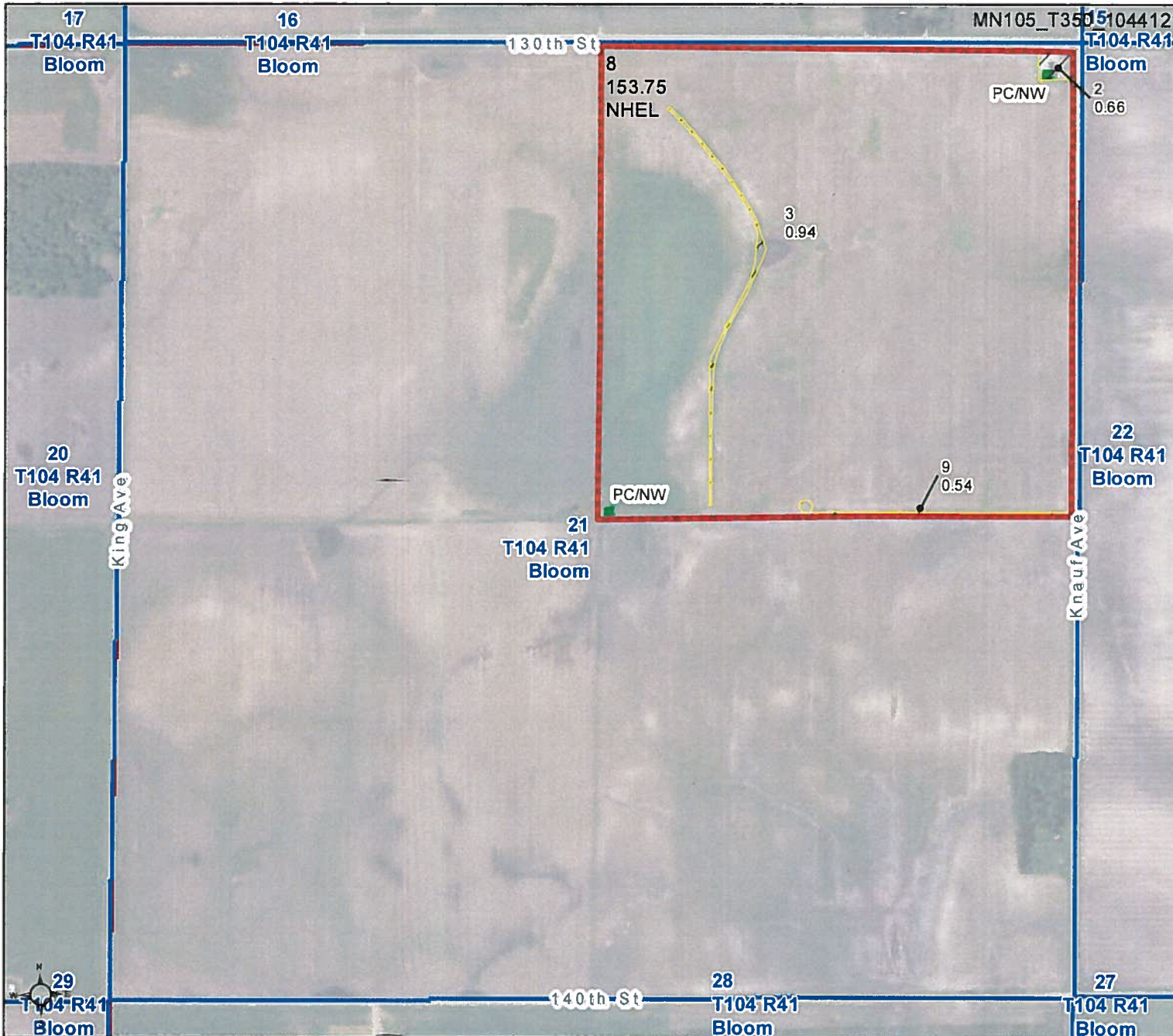
NOTES

Empty box for notes.

In accordance with Federal civil rights law and U.S. Department of Agriculture (USDA) civil rights regulations and policies, the USDA, its Agencies, offices, and employees, and institutions participating in or administering USDA programs are prohibited from discriminating based on race, color, national origin, religion, sex, gender identity (including gender expression), sexual orientation, disability, age, marital status, family/parental status, income derived from a public assistance program, political beliefs, or reprisal or retaliation for prior civil rights activity, in any program or activity conducted or funded by USDA (not all bases apply to all programs). Remedies and complaint filing deadlines vary by program or incident.

Persons with disabilities who require alternative means of communication for program information (e.g., Braille, large print, audiotape, American Sign Language, etc.) should contact the responsible Agency or USDA's TARGET Center at (202) 720-2600 (voice and TTY) or contact USDA through the Federal Relay Service at (800) 877-8339. Additionally, program information may be made available in languages other than English.

To file a program discrimination complaint, complete the USDA Program Discrimination Complaint Form, AD-3027, found online at [http://www.ascr.usda.gov/complaint\\_filing\\_cust.html](http://www.ascr.usda.gov/complaint_filing_cust.html) and at any USDA office or write a letter addressed to USDA and provide in the letter all of the information requested in the form. To request a copy of the complaint form, call (866) 632-9992. Submit your completed form or letter to USDA by: (1) mail: U.S. Department of Agriculture Office of the Assistant Secretary for Civil Rights 1400 Independence Avenue, SW Washington, D.C. 20250-9410; (2) fax: (202) 690-7442; or (3) e-mail: [program.intake@usda.gov](mailto:program.intake@usda.gov). USDA is an equal opportunity provider, employer, and lender.



- Unless otherwise noted:  
 Shares are 100% operator  
 Crops are non-irrigated  
 Corn = yellow for grain  
 Soybeans = common soybeans for grain  
 Wheat = HRS, HRW = Grain  
 Sunflower = Oil, Non-Oil = Grain  
 Oats and Barley = Spring for grain  
 Rye = for grain  
 Peas = process  
 Alfalfa, Mixed Forage AGM, GMA, IGS = for forage  
 Beans = Dry Edible  
 NAG = for GZ  
 Canola = Spring for seed

Common Land Unit

- Non-Cropland
- Cropland
- Tract Boundary
- Minnesota\_Transparency\_Polygon\_02142019

Wetland Determination Identifiers

- Restricted Use
- Limited Restrictions
- Exempt from Conservation
- Compliance Provisions

Tract Cropland Total: 153.75 acres



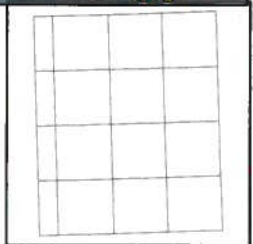
T 350 SEC 21 BLOOM TWP.



RECEIVED  
SEP 13 2012  
FROM NRCS



1:4,764



Maps are for graphical purposes only. They do not represent a legal survey. While every effort has been made to ensure that these data are accurate and reliable within the limits of the current state of the art, NRCS cannot assume liability for any damages caused by any errors or omissions in the data, nor as a result of the failure of the data to function on a particular system. NRCS makes no warranty, expressed or implied, nor does the fact of distribution constitute such a warranty.