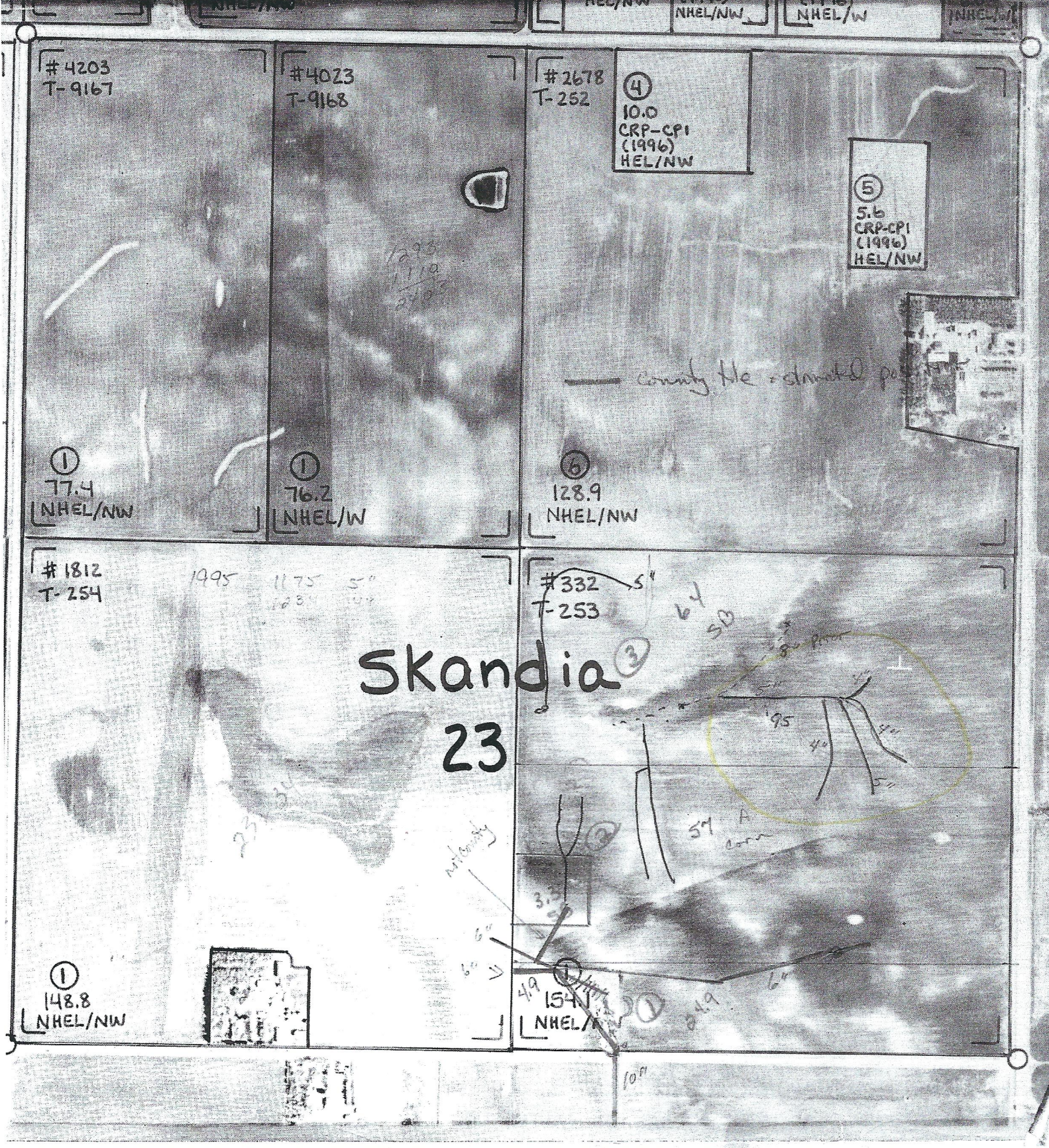


T = TRACT NUMBER | MT = MULTIPLE TRACT NUMBER | HEL = HIGHLY ERODIBLE LAND | MW = MINIMAL EFFECT WETLAND (EXEMPT)
 W = WETLAND | CW = CONVERTED WETLAND | NHEL = NON-HIGHLY ERODIBLE | MWC, MWH, MWR = SPECIAL COND. (SEE SCS)
 FW = FARMED WETLAND | NA = NON-AGRICULTURAL | PC = PRIOR CONVERTED WETLAND | NC = NON-CROPLAND | PHOTO NO.
 NW = NON-WETLAND | AW = ARTIFICIAL WETLAND | ECW = EXEMPT (COMMENCED) CONVERTED WETLAND

COUNTY Murray | INOT TOI REPRODUCED | CROP | SCALE 1 OCT. 1994 YR. | C-6

WARNING: Contact SCS before draining, dredging, filling, or leveling any wet areas or wetland coded fields or improving, modifying, or maintaining an existing drainage system.



#4203
T-9167

#4023
T-9168

#2678
T-252

④
10.0
CRP-CPI
(1996)
HEL/NW

⑤
5.6
CRP-CPI
(1996)
HEL/NW

①
77.4
NHEL/NW

①
76.2
NHEL/W

⑥
128.9
NHEL/NW

#1812
T-254

#332
T-253

Skandia
23

①
148.8
NHEL/NW

①
154
NHEL/NW

10"

MARION'S

1210' 5"

1600' 4"

INTAKE

300'

370'

30'

880' 4"

1210' 5"

590' 4"

80'

130' 4"

8" MAIN

INTAKE

(W)

(S)

(N)

(E)

Details From
MAP - 1

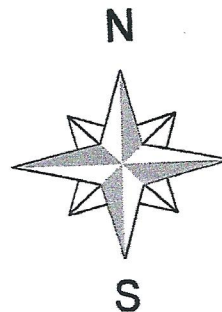
Ron Schwartau

Skandia 23

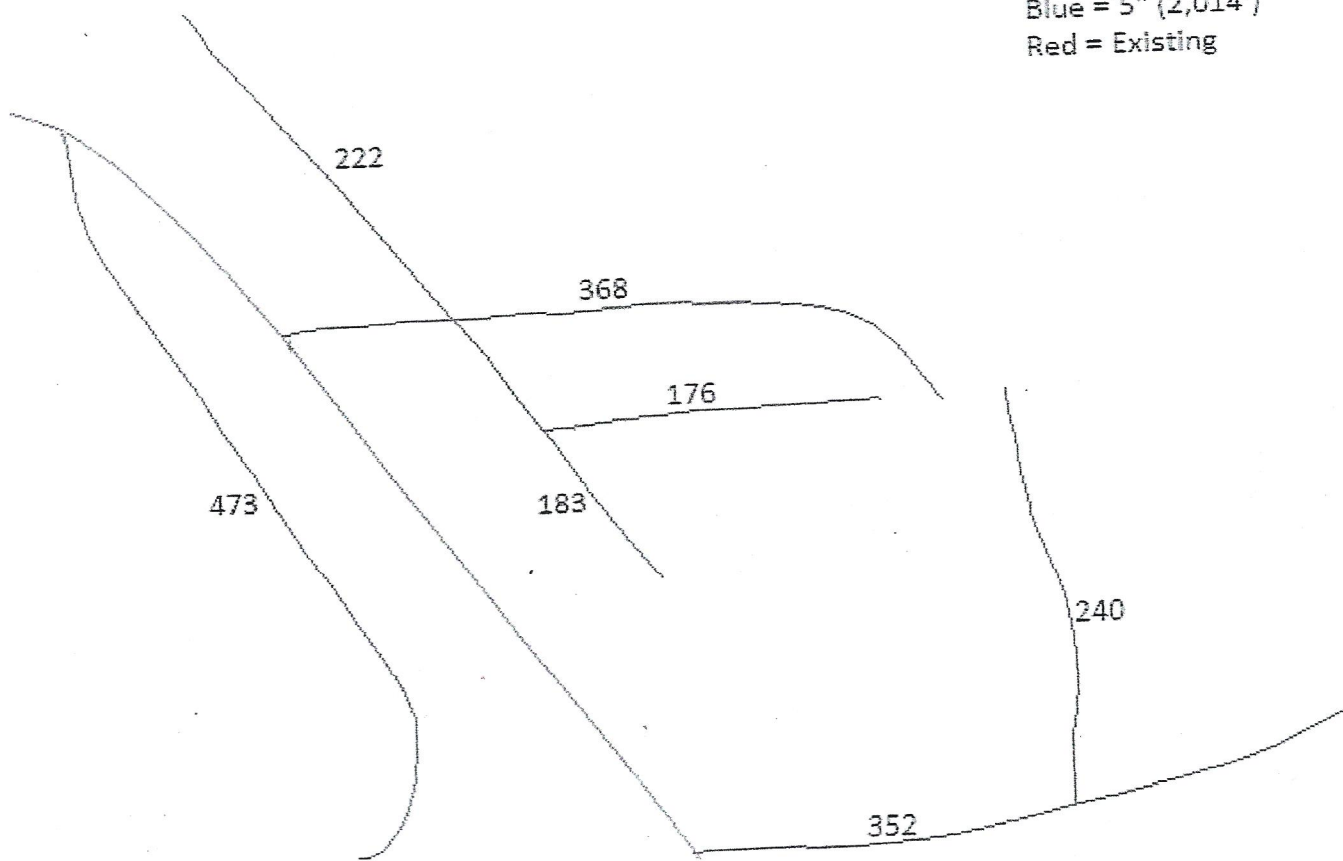
SE 1/4

Fall 2011

Tile Map



Blue = '5" (2,014")
Red = Existing

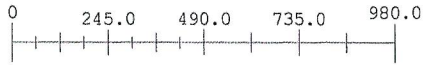


Overhead Results of August 2011

lower left (SW corner)
of sec 23

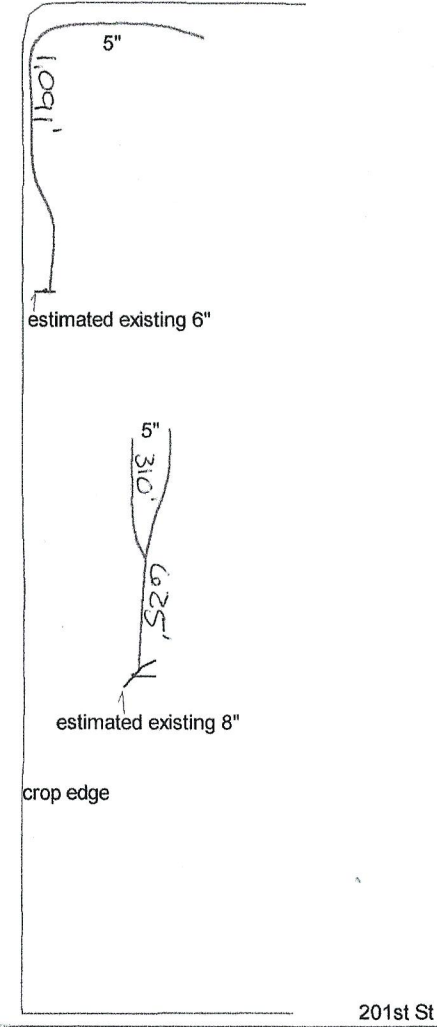


AgMAPP



Area: 0.00 ac. (RONSCS23)

Ron Schwartau - sec. 23 Skandia TWP, Murray Co. MN



Details of west line of sec 23

fall 2001

2026 x 1.15 = 2339.75

1165

MARION F GRAFF TRUST
19-023-0030

23

GD53 Lat 2

GD53 Lat 2

GD53 Lat 1

GD53 Lat 3

GD53 Lat 3

GD53 Main File

26

110TH AVE

SWAN/JUDY R. TRUST

GRAFF/MARION F. TRUST

Skandia

SWAN/TODD & KELLY TRUST

SWAN/JUDY R. TRUST

CD53 Lat 2.6

CD53 0

CD53 Lat 1.6

CD53 Lat 2.10

CD53 Lat 3.8

CD53 Lat 3.6

CD53 Main-Tile 10

