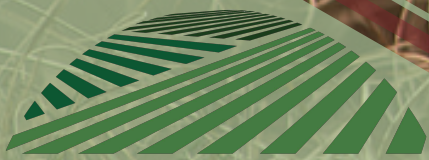


Lac Qui Parle County, Minnesota Land For Sale

PRST-STD
U.S. POSTAGE
PAID
Clear Lake, IA
PERMIT NO. 20



**<<First_Name>> <<Last_Name>>
Or Current Resident
<<AddressLine1>>
<<AddressLine2>>
<<City>>, <<State>> <<Zip>>**



NORTHWESTERN
FARM MANAGEMENT CO.
BROKER

507-532-5120 • www.nfmco.com

Land For Sale

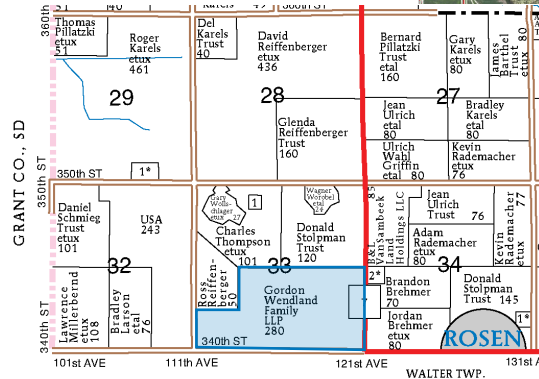
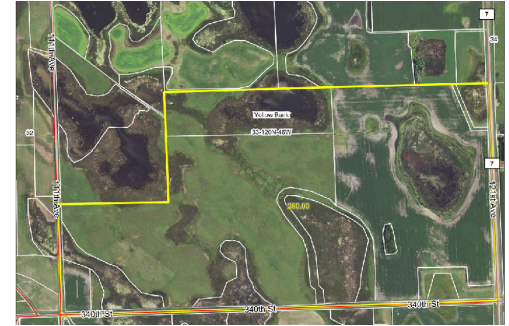
Legal Description: 280 Total Acres +/-, SE¼; SW¼ SW¼; and E½ SW¼ Section 33, Township 120 North, Range 46 West, (Yellow Bank Township), Lac qui Parle County, MN.

Farm Information: Rare opportunity to purchase Lac qui Parle County farmland and income producing hunting property. 280 total acres +/- approx. 80.15 FSA tillable acres +/- with a great Crop Productivity Index of 85.6 and 144.5 acres enrolled into CRP. This farm has excellent hunting opportunities for both upland game as well as waterfowl and good access from public roads. This is a must see farm!

Farm Location: 6 1/2 miles west of Bellingham, MN or 6 miles north of Nassau, MN.

Asking Price: \$915,000

Terms: To make an offer or for more Farm Information call Dan Sprengeler, salesperson, at 507-532-5120 or online at www.nfmco.com



This information provided herein is received from other sources and is believed to be correct NORTHWESTERN FARM MANAGEMENT COMPANY, Broker does not warrant its accuracy. We strongly suggest you contact the appropriate sources to confirm this information.



Farm Management • Farm Sales • Farm Appraisals
301 S. O'Connell St. • Marshall, MN 56258



Contact Dan Sprengeler

Cell: (507) 317-7229

Office: (507) 532-5120

Fax: (507) 532-0293

dan@nfmco.com

land@nfmco.com • www.nfmco.com

*60 years in business serving
all of Minnesota, Iowa, South and
North Dakota.*