

Minnesota  
Rock  
Report ID: FSA-156EZ

U.S. Department of Agriculture  
Farm Service Agency  
**Abbreviated 156 Farm Record**

**FARM: 5596**  
Prepared: 7/31/18 9:09 AM  
Crop Year: 2018  
Page: 2 of 3

DISCLAIMER: This is data extracted from the web farm database. Because of potential messaging failures in MIDAS, this data is not guaranteed to be an accurate and complete representation of data contained in the MIDAS system, which is the system of record for Farm Records.

---

Tract Number: 10139      Description: W SW 15 Leota Nobles County

BIA Range Unit Number:

HEL Status: NHEL: no agricultural commodity planted on undetermined fields

Wetland Status: Tract contains a wetland or farmed wetland

WL Violations: None

Farmland	Cropland	DCP Cropland	WBP	WRP/EWP	CRP Cropland	GRP
79.04	60.21	60.21	0.0	0.0	0.0	0.0
State Conservation	Other Conservation	Effective DCP Cropland	Double Cropped	MPL/FWP	Native Sod	
0.0	0.0	60.21	0.0	0.0	0.0	

Crop	Base Acreage	CTAP Tran Yield	PLC Yield	CCC-505 CRP Reduction
CORN	28.71		121	0.0
SOYBEANS	28.71		38	0.0
<b>Total Base Acres:</b>	57.42			

Owners: THOMAS L SEITZ TRUST

Other Producers: None

---

Map Created May 14, 2018



- Unless otherwise noted:  
 Shares are 100% operator  
 Crops are non-irrigated  
 Corn = yellow for grain  
 Soybeans = common soybeans for grain  
 Wheat = HRS, HRW = Grain  
 Sunflower = Oil, Non-Oil = Grain  
 Oats and Barley = Spring for grain  
 Rye = for grain  
 Peas = process  
 Alfalfa, Mixed Forage AGM, GMA, IGS = for forage  
 Beans = Dry Edible  
 NAG = for GZ  
 Canola = Spring for seed

**Common Land Unit**

- Non\_Cropland
- Cropland
- Tract Boundary
- PLSS

**Wetland Determination Identifiers**

- Restricted Use
- Limited Restrictions
- Exempt from Conservation Compliance Provisions

Tract Cropland Total: 60.21 acres



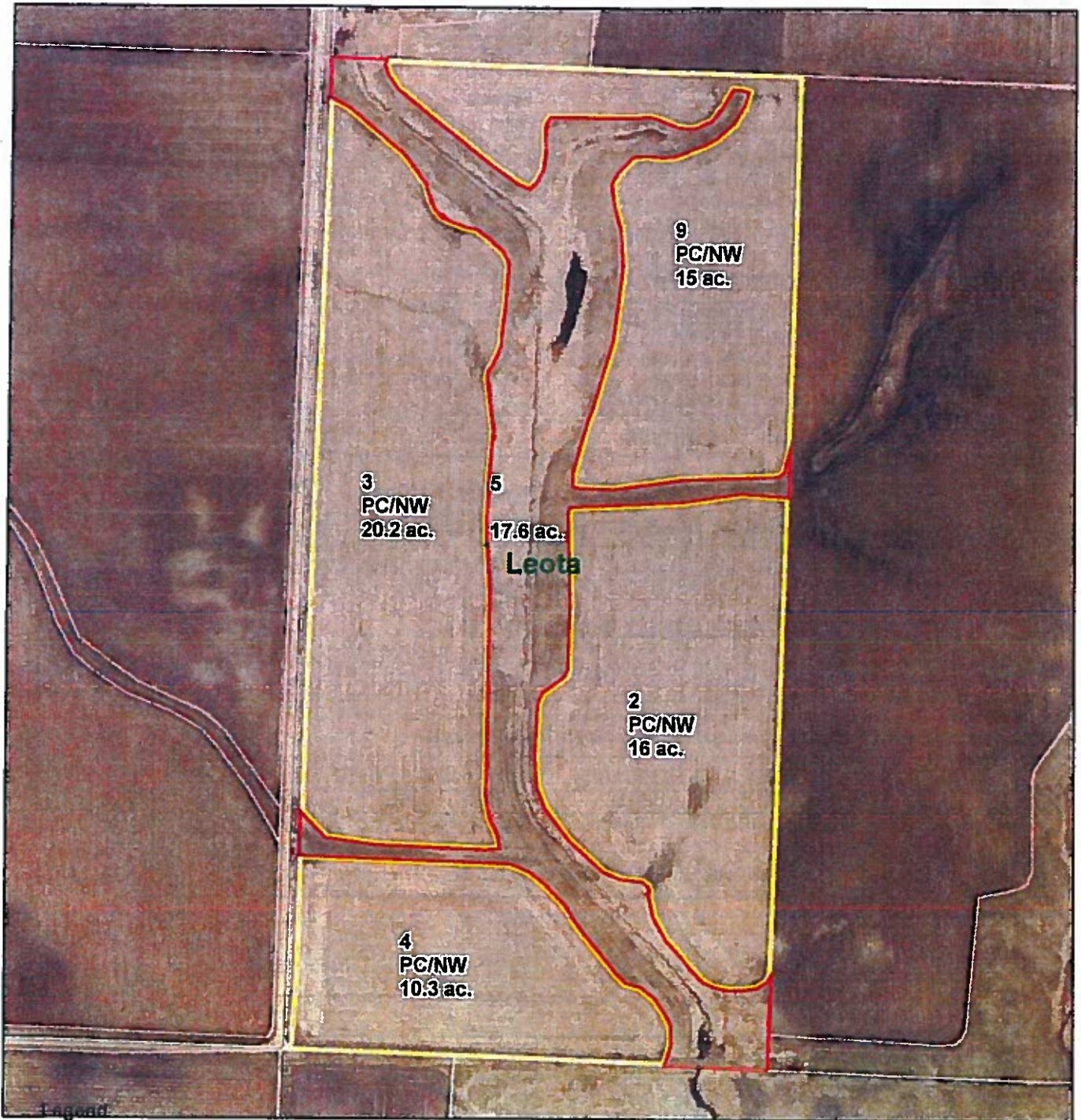
United States Department of Agriculture (USDA) Farm Service Agency (FSA) maps are for FSA Program administration only. This map does not represent a legal survey or reflect actual ownership; rather it depicts the information provided from the producer and/or National Agricultural Imagery Program (NAIP) imagery. The producer accepts the data 'as is' and assumes all risks associated with its use. USDA-FSA assumes no responsibility for actual or consequential damage incurred as a result of any user's reliance on this data outside FSA Programs. Wetland identifiers do not represent the size, shape, or specific determination of the area. Refer to your original determination (CPA-026 and attached maps) for boundaries and determinations or contact USDA Natural Resources Conservation Service (NRCS). This map displays the 2017 NAIP Imagery.

# T 10139

L & F Farms  
T 216-3 Sec. 15 Leota Twp.  
Nobles County

Agency: NRCS  
Field Office: Nobles  
District: Nobles SWCD

## Certified Wetland Determination

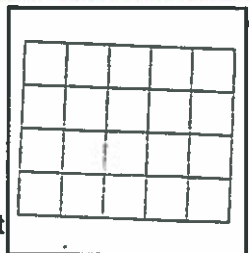


Legend

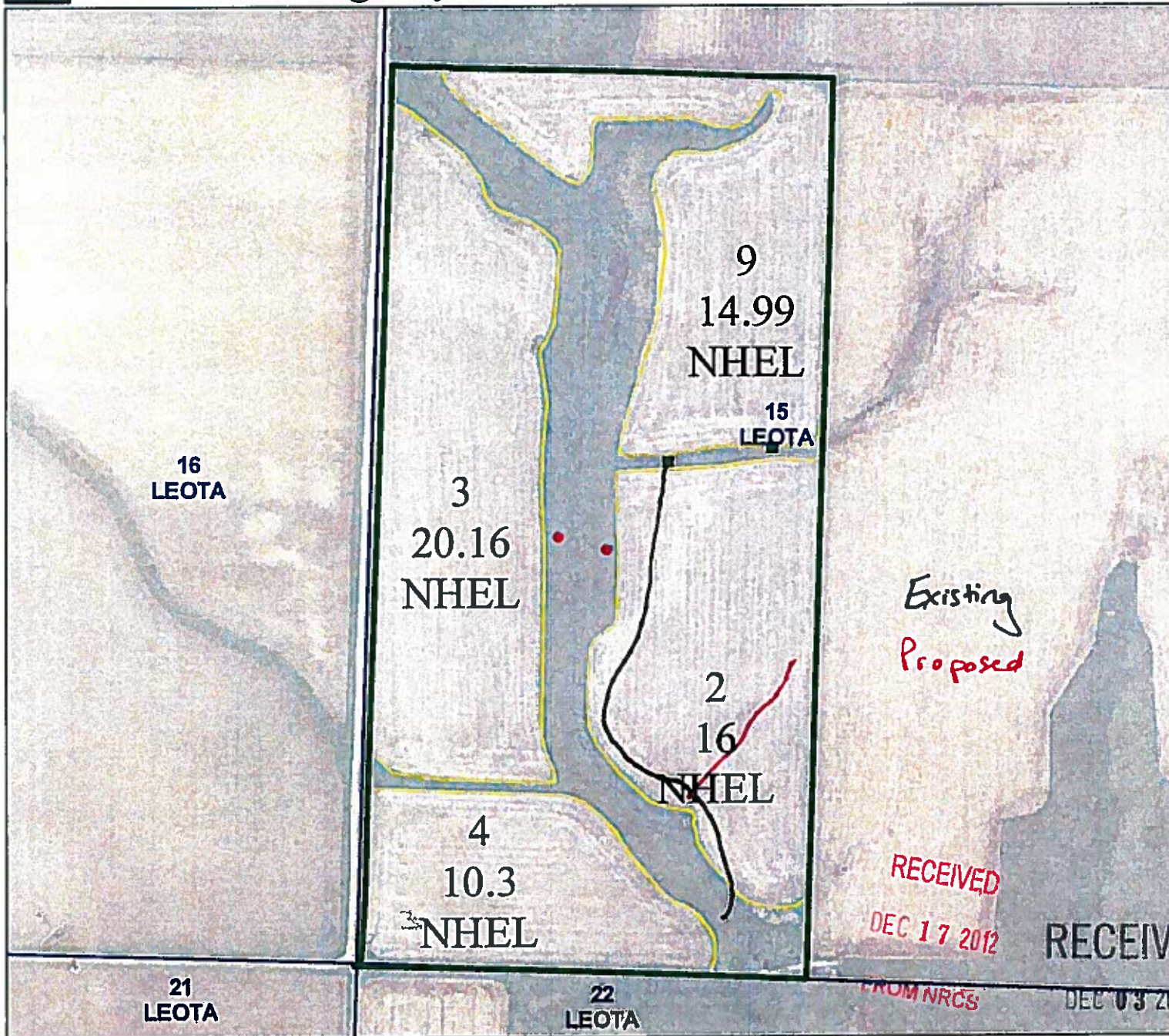
Sections	AW	MWM
Townships	CME	NW
Missing Label	CPD	NW/NAD
PC/NW	CW	PC
W	CWTE	TP
FW	MIW	wx0
FWP	MW	



1:4,692



Maps are for graphical purposes only. They do not represent a legal survey. While every effort has been made to ensure that these data are accurate and reliable within the limits of the current state of the art, NRCS cannot assume liability for any damages caused by any errors or omissions in the data, nor as a result of the failure of the data to function on a particular system. NRCS makes no warranty, expressed or implied, nor does the fact of distribution constitute such a warranty.



Farm Number:

5294

Tract Number:

21643

T104 R43 S15

Leota

Apr 16, 2012

2012 FSA Acreage Map

Scale: 1:4,800



Legend

- G.U. Field Boundary
- Tract Boundary
- Section Lines
- CRP Contracts
- Restricted Use
- ▼ Limited Restrictions
- Exempt from Conservation Compliance Provisions

Wetland identifiers do not represent the size, shape or specific delineation of the area. Refer to your original determination of PA 02s and attached maps for exact wetland boundaries and determinations, or contact NHEA.

Acre Summary

Total Acres	994
Total CRP	0
Cropland	61.45

Acre Summary reflects Custom Land Use data and is not reflective of parcel information. All information contained in this summary is for FSA business purposes.

RECEIVED  
DEC 17 2012  
FROM NRCS

RECEIVED  
DEC 03 2012

