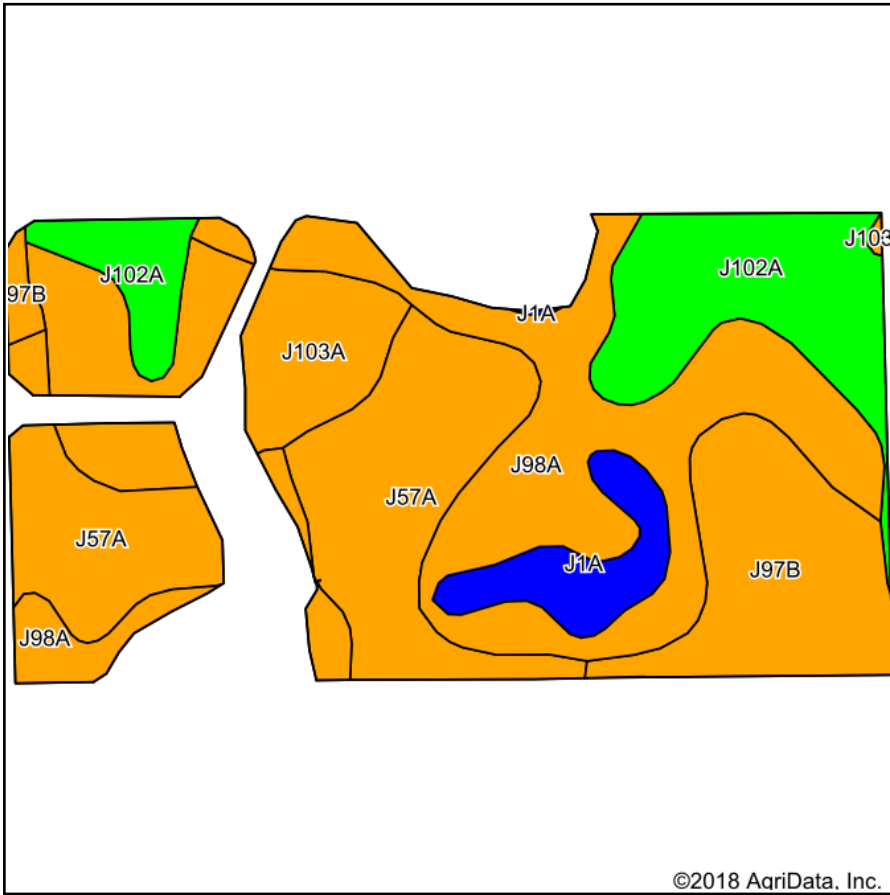
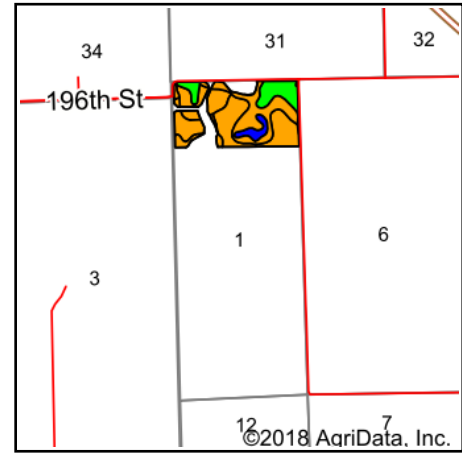


# Soils Map



Soils data provided by USDA and NRCS.



State: **Minnesota**  
 County: **Lincoln**  
 Location: **1-112N-47W**  
 Township: **Hendricks**  
 Acres: **33.77**  
 Date: **7/24/2018**



## Area Symbol: MN081, Soil Area Version: 15

Code	Soil Description	Acres	Percent of field	Non-Irr Class Legend	Non-Irr Class *c	Productivity Index
J98A	Parnell silty clay loam, 0 to 2 percent slopes	9.30	27.5%		llw	93
J57A	Balaton loam, 1 to 3 percent slopes	7.99	23.7%		lls	96
J102A	Oak Lake silty clay loam, 1 to 3 percent slopes	5.44	16.1%		le	99
J103A	Winger silty clay loam, 0 to 2 percent slopes	4.73	14.0%		llw	90
J97B	Singsaas-Oak Lake complex, 1 to 6 percent slopes	4.64	13.7%		lle	97
J1A	Parnell silty clay loam, depressional, 0 to 1 percent slopes	1.67	4.9%		lllw	86
<b>Weighted Average</b>						<b>94.5</b>

\*c: Using Capabilities Class Dominant Condition Aggregation Method

Soils data provided by USDA and NRCS.